

DATASHEET

Anti-Infectious Bursal Disease Virus (IBDV) VP2 Protein Mouse Monoclonal Antibody (VP2_5G10)

CAT. NO. AXA0023

KEY FEATURES

Target	Infectious Bursal Disease Virus (IBDV) VP2 Protein	Source / Host	Mouse
Reactivity	Infectious Bursal Disease Virus (IBDV) VP2 Protein	Clonality	Monoclonal
Applications	WB,IF/ICC	Storage	-20.0°C

BACKGROUND

Infectious Bursal Disease Virus (IBDV) Variant VP2 Protein is the major structural protein and key immunogenic component of the variant strain of IBDV located on the viral capsid surface it is responsible for mediating viral attachment to host cells and determining viral pathogenicity and antigenicity its amino acid sequence has unique mutations compared to classical IBDV strains which contribute to the variant strain's ability to evade host immunity and cause persistent infections in poultry as the primary target for inducing neutralizing antibodies it plays a crucial role in the development of diagnostic kits and novel vaccines against variant IBDV infections and is widely used in epidemiological surveillance and immunological research of the disease.

APPLICATION

To ensure optimal assay performance, AREX recommends conducting reagent titration tailored to each testing system for optimal detection results.

Application	Dilution Ratio
WB	1:200-1:1000
IF/ICC	1:200-1:500

*Results are sample-specific. Please refer to your local assay conditions and test parameters for reference.

OVERVIEW

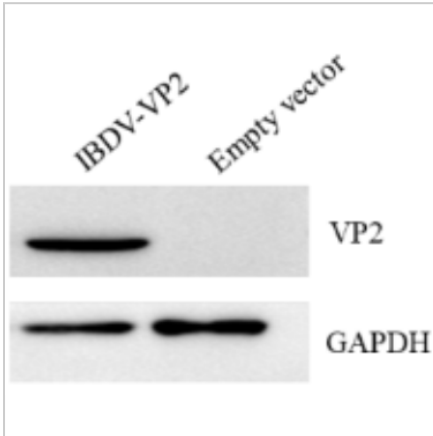
Description	Mouse Monoclonal antibody to Infectious Bursal Disease Virus (IBDV) VP2 Protein
Antibody Type	Primary antibody
Immunogen	IBDV VP2 Protein
Form/Buffer	PBS, 20% Glycerol; preservative: 0.05% Sodium Azide
Alternative Names	IBDV VP2, Gumboro disease virus VP2, IBDV capsid protein VP2, Infectious bursal disease virus major capsid protein

*AREX continuously optimizes our products. Webpage content may not reflect the latest updates. For inquiries, please contact info@arexbio.com or your local distributor.

*Clone Number, Reactivity, Source/Host and Clonality can be found in the product name and Key Features section above.

DATASHEET**Anti-Infectious Bursal Disease Virus (IBDV) VP2 Protein Mouse Monoclonal Antibody (VP2_5G10)**

CAT. NO. AXA0023

DATA

WB results demonstrate that this antibody can effectively recognize the IBDV VP2 protein expressed in LMH cells.

STORAGE

Shipped at 4°C. Store at -20°C for one year. Avoid repeated freeze/thaw cycles.

NOTE

For Research Use Only. Not for diagnostic, therapeutics, prophylactic or in vivo use.

More information: www.arexbio.com