

DATASHEET

Anti-Canine Coronavirus (CCoV) M Protein Mouse Monoclonal Antibody (2H11)

CAT. NO. AXA0030

KEY FEATURES

Target	Canine Coronavirus (CCoV) M Protein	Source / Host	Mouse
Reactivity	CCoV M Protein	Clonality	Monoclonal
Applications	WB,IF/ICC,ELISA	Storage	-20.0°C

BACKGROUND

Canine Coronavirus (CCoV) M Protein is a key membrane glycoprotein of CCoV, localized on the viral envelope. It plays multiple critical roles in the viral life cycle, including mediating viral assembly, budding, and membrane fusion with host cells. As an important immunogenic protein, it can induce the host to produce specific antibodies and serves as a target for the development of CCoV diagnostic reagents and vaccines. Its structural characteristics are closely related to the virus's pathogenicity and interspecies transmission potential.

APPLICATION

To ensure optimal assay performance, AREX recommends conducting reagent titration tailored to each testing system for optimal detection results.

Application	Dilution Ratio
WB	1:200-1:1000
IF/ICC	1:500-1:1000
ELISA	1:2000-1:10000

*Results are sample-specific. Please refer to your local assay conditions and test parameters for reference.

OVERVIEW

Description	Mouse Monoclonal antibody to Canine Coronavirus (CCoV) M Protein
Antibody Type	Primary antibody
Isotype	IgG3
Immunogen	CCoV Whole Virus
Form/Buffer	PBS, 20% Glycerol; preservative: 0.05% Sodium Azide
Alternative Names	CCoV M, Canine coronavirus membrane protein, CCoV matrix glycoprotein, CCoV M glycoprotein

*AREX continuously optimizes our products. Webpage content may not reflect the latest updates. For inquiries, please contact info@arexbio.com or your local distributor.

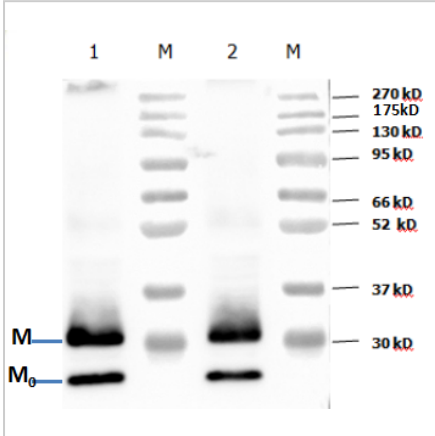
*Clone Number, Reactivity, Source/Host and Clonality can be found in the product name and Key Features section above.

DATASHEET

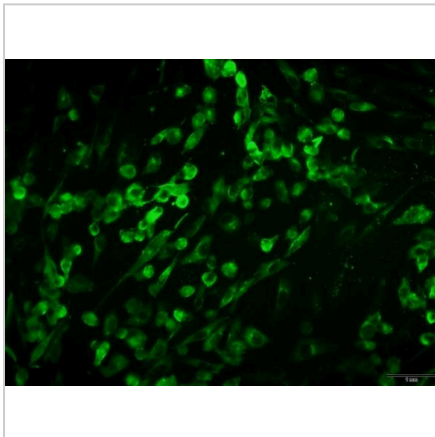
Anti-Canine Coronavirus (CCoV) M Protein Mouse Monoclonal Antibody (2H11)

CAT. NO. AXA0030

DATA



The WB results showed that this antibody can effectively recognize the CCoV M protein.



The IFA results indicated that this antibody can effectively recognize CCoV-infected cells.

STORAGE

Shipped at 4°C. Store at -20°C for one year. Avoid repeated freeze/thaw cycles.

NOTE

For Research Use Only. Not for diagnostic, therapeutics, prophylactic or in vivo use.

More information: www.arexbio.com