

**DATASHEET**

**Anti-Canine Parvovirus (CPV) VP2 Protein Mouse Monoclonal Antibody (2B12)**

**CAT. NO. AXA0040**

**KEY FEATURES**

Target	Canine Parvovirus (CPV) VP2 Protein	Source / Host	Mouse
Reactivity	CPV VP2 Protein	Clonality	Monoclonal
Applications	WB,IF/ICC,ELISA,Neutralization	Storage	-20.0°C

**BACKGROUND**

Canine Parvovirus (CPV) VP2 Protein is the major capsid protein of CPV, a highly contagious single-stranded DNA virus belonging to the Parvoviridae family. It accounts for over 90% of the total capsid protein content and plays irreplaceable roles in viral structure formation, host infection, immune response induction, and pathogenicity, making it a core target for CPV research, diagnosis, and vaccine development.

**APPLICATION**

To ensure optimal assay performance, AREX recommends conducting reagent titration tailored to each testing system for optimal detection results.

Application	Dilution Ratio
WB	1:200-1:1000
IF/ICC	1:500-1:1000
ELISA	1:2000-1:10000
Neutralization	1:10-1:200

\*Results are sample-specific. Please refer to your local assay conditions and test parameters for reference.

**OVERVIEW**

Description	Mouse Monoclonal antibody to Canine Parvovirus (CPV) VP2 Protein
Antibody Type	Primary antibody
Isotype	IgG1
Immunogen	CPV Whole Virus
Form/Buffer	PBS, 20% Glycerol; preservative: 0.05% Sodium Azide
Alternative Names	CPV VP2, CPV-2 VP2, Canine parvovirus capsid protein VP2, Canine parvovirus type 2 VP2

\*AREX continuously optimizes our products. Webpage content may not reflect the latest updates. For inquiries, please contact [info@arexbio.com](mailto:info@arexbio.com) or your local distributor.

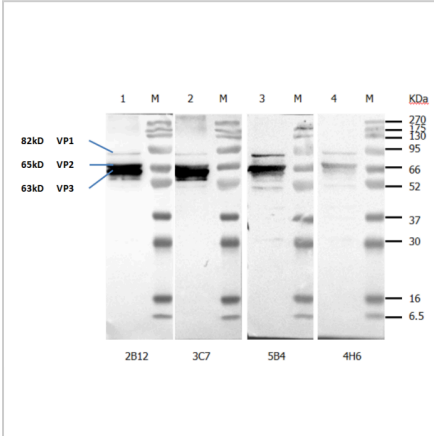
\*Clone Number, Reactivity, Source/Host and Clonality can be found in the product name and Key Features section above.

**DATASHEET**

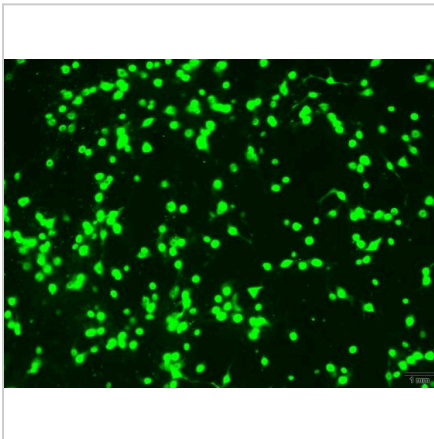
**Anti-Canine Parvovirus (CPV) VP2 Protein Mouse Monoclonal Antibody (2B12)**

CAT. NO. AXA0040

**DATA**



The WB results showed that this antibody can effectively recognize the CPV VP2 protein.



The IFA results indicated that this antibody can effectively recognize CPV-infected cells.

**STORAGE**

Shipped at 4°C. Store at -20°C for one year. Avoid repeated freeze/thaw cycles.

**NOTE**

For Research Use Only. Not for diagnostic, therapeutics, prophylactic or in vivo use.

More information: [www.arexbio.com](http://www.arexbio.com)