

DATASHEET

Anti-Canine Parvovirus (CPV) VP2 Protein Mouse Monoclonal Antibody (3C7)

CAT. NO. AXA0041

KEY FEATURES

Target	Canine Parvovirus (CPV) VP2 Protein	Source / Host	Mouse
Reactivity	CPV VP2 Protein	Clonality	Monoclonal
Applications	WB,IF/ICC,ELISA,Neutralization	Storage	-20.0°C

BACKGROUND

Canine Parvovirus (CPV) VP2 Protein is the major capsid protein of CPV, a highly contagious single-stranded DNA virus belonging to the Parvoviridae family. It accounts for over 90% of the total capsid protein content and plays irreplaceable roles in viral structure formation, host infection, immune response induction, and pathogenicity, making it a core target for CPV research, diagnosis, and vaccine development.

APPLICATION

To ensure optimal assay performance, AREX recommends conducting reagent titration tailored to each testing system for optimal detection results.

Application	Dilution Ratio
WB	1:200-1:1000
IF/ICC	1:500-1:1000
ELISA	1:2000-1:10000
Neutralization	1:10-1:200

*Results are sample-specific. Please refer to your local assay conditions and test parameters for reference.

OVERVIEW

Description	Mouse Monoclonal antibody to Canine Parvovirus (CPV) VP2 Protein
Antibody Type	Primary antibody
Isotype	IgG2b
Immunogen	CPV Whole Virus
Form/Buffer	PBS, 20% Glycerol; preservative: 0.05% Sodium Azide
Alternative Names	CPV VP2, CPV-2 VP2, Canine parvovirus capsid protein VP2, Canine parvovirus type 2 VP2

*AREX continuously optimizes our products. Webpage content may not reflect the latest updates. For inquiries, please contact info@arexbio.com or your local distributor.

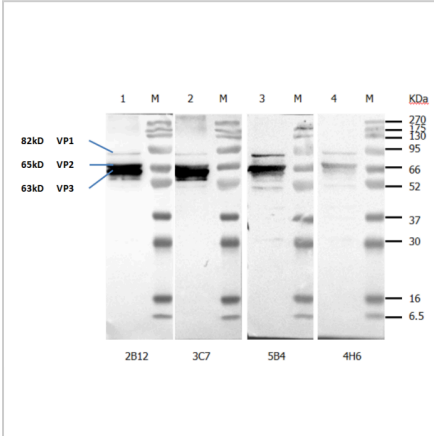
*Clone Number, Reactivity, Source/Host and Clonality can be found in the product name and Key Features section above.

DATASHEET

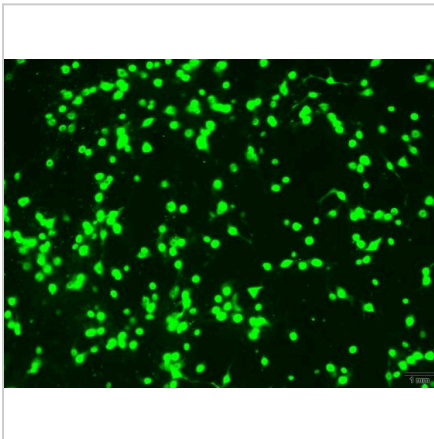
Anti-Canine Parvovirus (CPV) VP2 Protein Mouse Monoclonal Antibody (3C7)

CAT. NO. AXA0041

DATA



The WB results showed that this antibody can effectively recognize the CPV VP2 protein.



The IFA results indicated that this antibody can effectively recognize CPV-infected cells.

STORAGE

Shipped at 4°C. Store at -20°C for one year. Avoid repeated freeze/thaw cycles.

NOTE

For Research Use Only. Not for diagnostic, therapeutics, prophylactic or in vivo use.

More information: www.arexbio.com