

DATASHEET

Smooth Muscle Actin Rabbit Monoclonal Antibody(C618)

CAT. NO. AMA00230

KEY FEATURES

Target	Smooth Muscle Actin	Source / Host	Rabbit
Reactivity	Human, Mouse, Rat, Chicken	Clonality	Monoclonal
Applications	WB, IHC, IF/ICC	Conjugation	Unconjugated
Form / Buffer	Liquid in PBS, pH 7.4, containing 50% glycerol, 0.05% BSA and 0.01% sodium azide.	Storage	at-20°C

BACKGROUND

Actins are highly conserved proteins that are involved in various types of cell motility and are ubiquitously expressed in all eukaryotic cells.

APPLICATION

To ensure optimal assay performance, AREX recommends conducting reagent titration tailored to each testing system for optimal detection results.

WB	1:500 - 1:1000
IHC	1:100 - 1:500
IF/ICC	1:50 - 1:200

*Results are sample-specific. Please refer to your local assay conditions and test parameters for reference.

PRODUCT OVERVIEW

Description	Recombinant rabbit monoclonal antibody to Smooth Muscle Actin
Specificity	Recognizes endogenous levels of Smooth Muscle Actin protein.
Antibody Type	Primary antibody, Recombinant
Immunogen	Recombinant fusion protein of human Smooth Muscle Actin. The exact sequence is proprietary.
Purification	The antibody was purified by immunogen affinity chromatography.
Molecular Weight	Predicted: 42 kD; Observed: 43 kD
Form/Buffer	Liquid in PBS, pH 7.4, containing 50% glycerol, 0.05% BSA and 0.01% sodium azide.
Alternative Names	ACTSA; ACTVS; Actin, aortic smooth muscle; Alpha-actin-2; Cell growth-inhibiting gene 46 protein
Gene Symbol	ACTA2
Entrez Gene	59(Human); 11475(Mouse); 81633(Rat)
SwissProt	P62736(Human); P62737(Mouse); P62738(Rat)

*AREX continuously optimizes our products. Webpage content may not reflect the latest updates. For inquiries, please contact info@arexbio.com or your local distributor.

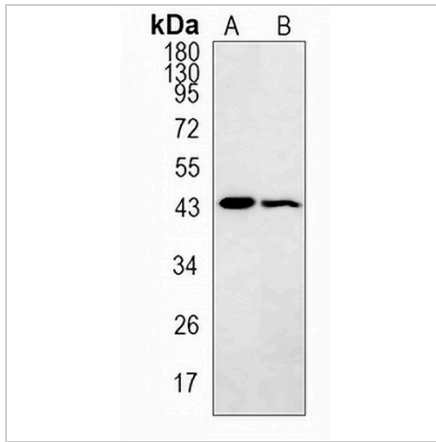
*Clone Number, Reactivity, Source/Host and Clonality can be found in the product name and Key Features section above.

DATASHEET

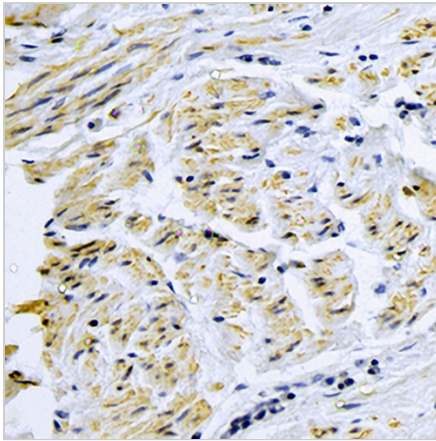
Smooth Muscle Actin Rabbit Monoclonal Antibody(C618)

CAT. NO. AMA00230

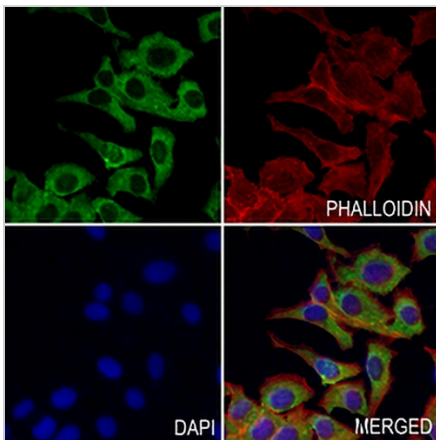
DATA



Western blot analysis of Smooth Muscle Actin expression in mouse liver (A), rat liver (B) whole cell lysates. (Predicted band size: 42 kD; Observed band size: 43 kD)



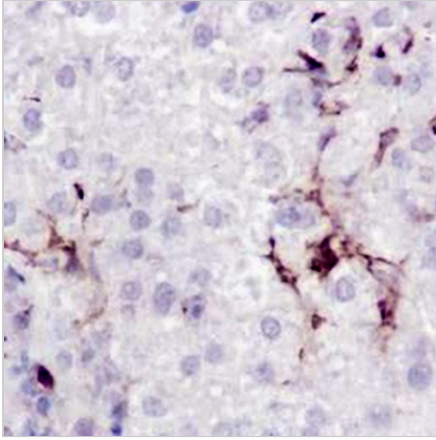
Immunohistochemical analysis of Smooth Muscle Actin staining in human lung cancer formalin fixed paraffin embedded tissue section. The section was pre-treated using heat mediated antigen retrieval with sodium citrate buffer (pH 6.0). The section was then incubated with the antibody at room temperature and detected using an HRP conjugated compact polymer system. DAB was used as the chromogen. The section was then counterstained with haematoxylin and mounted with DPX.



Immunofluorescent analysis of Smooth Muscle Actin staining in HepG2 cells. Formalin-fixed cells were permeabilized with 0.1% Triton X-100 in TBS for 5-10 minutes and blocked with 3% BSA-PBS for 30 minutes at room temperature. Cells were probed with the primary antibody in 3% BSA-PBS and incubated overnight at 4 °C in a humidified chamber. Cells were washed with PBST and incubated with a AREX® Fluor 488 - conjugated secondary antibody (green) in PBS at room temperature in the dark. Phalloidin - AREX® Fluor 594 was used to stain Actin filaments (red). DAPI was used to stain the cell nuclei (blue).

DATASHEET**Smooth Muscle Actin Rabbit Monoclonal Antibody(C618)**

CAT. NO. AMA00230

DATA (CONTINUED)

Immunohistochemical analysis of Smooth Muscle Actin staining in human liver formalin fixed paraffin embedded tissue section. The section was pre-treated using heat mediated antigen retrieval with sodium citrate buffer (pH 6.0). The section was then incubated with the antibody at room temperature and detected using an HRP conjugated compact polymer system. DAB was used as the chromogen. The section was then counterstained with haematoxylin and mounted with DPX.

STORAGE

Store at 4°C short term. For long term storage, store at -20°C, avoiding freeze/thaw cycles.

NOTE

For Research Use Only. Not for diagnostic, therapeutics, prophylactic or in vivo use.