

DATASHEET

Alpha-fetoglobulin Rabbit Monoclonal Antibody(C621)

CAT. NO. AMA00233

KEY FEATURES

| | | | |
|---------------|---|---------------|--------------|
| Target | Alpha-fetoglobulin | Source / Host | Rabbit |
| Reactivity | Human | Clonality | Monoclonal |
| Applications | IHC | Conjugation | Unconjugated |
| Form / Buffer | Liquid in PBS, pH 7.4, containing 50% glycerol, 0.05% BSA and 0.01% sodium azide. | Storage | at-20°C |

BACKGROUND

Binds copper, nickel, and fatty acids as well as, and bilirubin less well than, serum albumin. Only a small percentage (less than 2%) of the human AFP shows estrogen-binding properties.

APPLICATION

To ensure optimal assay performance, AREX recommends conducting reagent titration tailored to each testing system for optimal detection results.

| | |
|-----|---------------|
| IHC | 1:100 - 1:500 |
|-----|---------------|

*Results are sample-specific. Please refer to your local assay conditions and test parameters for reference.

PRODUCT OVERVIEW

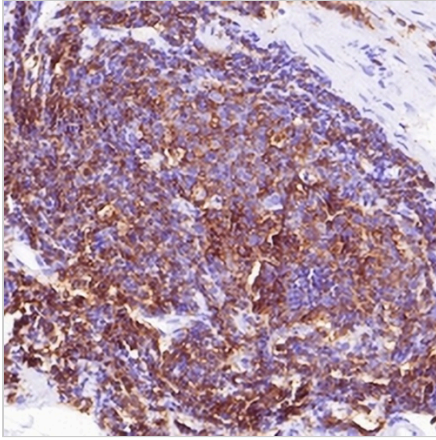
| | |
|-------------------|--|
| Description | Recombinant rabbit monoclonal antibody to Alpha-fetoglobulin |
| Specificity | Recognizes endogenous levels of Alpha-fetoglobulin protein. |
| Antibody Type | Primary antibody, Recombinant |
| Immunogen | Recombinant fusion protein of human Alpha-fetoglobulin. The exact sequence is proprietary. |
| Purification | The antibody was purified by immunogen affinity chromatography. |
| Form/Buffer | Liquid in PBS, pH 7.4, containing 50% glycerol, 0.05% BSA and 0.01% sodium azide. |
| Alternative Names | HPAFP; Alpha-fetoprotein; Alpha-1-fetoprotein; Alpha-fetoglobulin |
| Gene Symbol | AFP |
| Entrez Gene | 174(Human) |
| SwissProt | P02771(Human) |

*AREX continuously optimizes our products. Webpage content may not reflect the latest updates. For inquiries, please contact info@arexbio.com or your local distributor.

*Clone Number, Reactivity, Source/Host and Clonality can be found in the product name and Key Features section above.

DATASHEET**Alpha-fetoglobulin Rabbit Monoclonal Antibody(C621)**

CAT. NO. AMA00233

DATA

Immunohistochemical analysis of Alpha-fetoglobulin staining in human colon cancer formalin fixed paraffin embedded tissue section. The section was pre-treated using heat mediated antigen retrieval with sodium citrate buffer (pH 6.0). The section was then incubated with the antibody at room temperature and detected using an HRP conjugated compact polymer system. DAB was used as the chromogen. The section was then counterstained with haematoxylin and mounted with DPX.

STORAGE

Store at 4°C short term. For long term storage, store at -20°C, avoiding freeze/thaw cycles.

NOTE

For Research Use Only. Not for diagnostic, therapeutics, prophylactic or in vivo use.