

DATASHEET

Gi24 Rabbit Monoclonal Antibody(C631)

CAT. NO. AMA00243

KEY FEATURES

Target	Gi24	Source / Host	Rabbit
Reactivity	Human	Clonality	Monoclonal
Applications	IHC	Conjugation	Unconjugated
Form / Buffer	Liquid in PBS, pH 7.4, containing 50% glycerol, 0.05% BSA and 0.01% sodium azide.	Storage	at-20°C

BACKGROUND

Immunoregulatory receptor which inhibits the T-cell response . May promote differentiation of embryonic stem cells, by inhibiting BMP4 signaling . May stimulate MMP14-mediated MMP2 activation .

APPLICATION

To ensure optimal assay performance, AREX recommends conducting reagent titration tailored to each testing system for optimal detection results.

IHC	1:100 - 1:500
-----	---------------

*Results are sample-specific. Please refer to your local assay conditions and test parameters for reference.

PRODUCT OVERVIEW

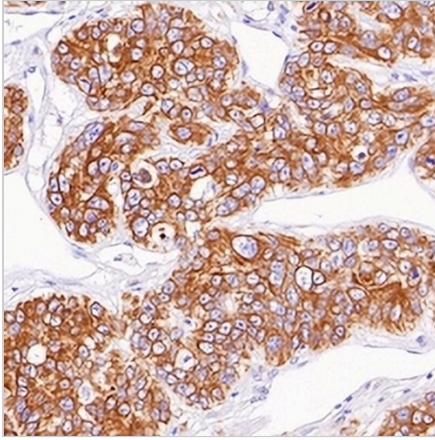
Description	Recombinant rabbit monoclonal antibody to Gi24
Specificity	Recognizes endogenous levels of Gi24 protein.
Antibody Type	Primary antibody, Recombinant
Immunogen	Recombinant fusion protein of human Gi24. The exact sequence is proprietary.
Purification	The antibody was purified by immunogen affinity chromatography.
Form/Buffer	Liquid in PBS, pH 7.4, containing 50% glycerol, 0.05% BSA and 0.01% sodium azide.
Alternative Names	C10orf54; SISP1; VISTA; Platelet receptor Gi24; Stress-induced secreted protein-1; Sisp-1
Gene Symbol	VSIR
Entrez Gene	64115(Human)
SwissProt	Q9H7M9(Human)

*AREX continuously optimizes our products. Webpage content may not reflect the latest updates. For inquiries, please contact info@arexbio.com or your local distributor.

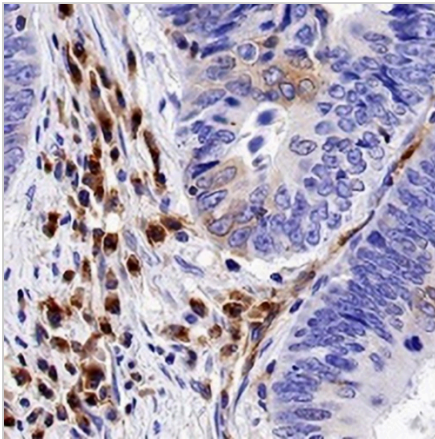
*Clone Number, Reactivity, Source/Host and Clonality can be found in the product name and Key Features section above.

DATASHEET**Gi24 Rabbit Monoclonal Antibody(C631)**

CAT. NO. AMA00243

DATA

Immunohistochemical analysis of Gi24 staining in human liver cancer formalin fixed paraffin embedded tissue section. The section was pre-treated using heat mediated antigen retrieval with sodium citrate buffer (pH 6.0). The section was then incubated with the antibody at room temperature and detected using an HRP conjugated compact polymer system. DAB was used as the chromogen. The section was then counterstained with haematoxylin and mounted with DPX.



Immunohistochemical analysis of Gi24 staining in human colon cancer formalin fixed paraffin embedded tissue section. The section was pre-treated using heat mediated antigen retrieval with sodium citrate buffer (pH 6.0). The section was then incubated with the antibody at room temperature and detected using an HRP conjugated compact polymer system. DAB was used as the chromogen. The section was then counterstained with haematoxylin and mounted with DPX.

STORAGE

Store at 4°C short term. For long term storage, store at -20°C, avoiding freeze/thaw cycles.

NOTE

For Research Use Only. Not for diagnostic, therapeutics, prophylactic or in vivo use.