

**DATASHEET**

**ALDH3A1 Rabbit Monoclonal Antibody(C640)**

CAT. NO. AMA00252

**KEY FEATURES**

Target	ALDH3A1	Source / Host	Rabbit
Reactivity	Human	Clonality	Monoclonal
Applications	IHC	Conjugation	Unconjugated
Form / Buffer	Liquid in PBS, pH 7.4, containing 50% glycerol, 0.05% BSA and 0.01% sodium azide.	Storage	at-20°C

**BACKGROUND**

ALDHs play a major role in the detoxification of alcohol-derived acetaldehyde (Probable). They are involved in the metabolism of corticosteroids, biogenic amines, neurotransmitters, and lipid peroxidation (Probable). Oxidizes medium and long chain aldehydes into non-toxic fatty acids . They are involved in the metabolism of corticosteroids, biogenic amines, neurotransmitters, and lipid peroxidation (Probable). Oxidizes medium and long chain aldehydes into non-toxic fatty acids . Preferentially oxidizes aromatic aldehyde substrates . Comprises about 50 percent of corneal epithelial soluble proteins . May play a role in preventing corneal damage caused by ultraviolet light .

**APPLICATION**

To ensure optimal assay performance, AREX recommends conducting reagent titration tailored to each testing system for optimal detection results.

IHC	1:100 - 1:500
-----	---------------

\*Results are sample-specific. Please refer to your local assay conditions and test parameters for reference.

**PRODUCT OVERVIEW**

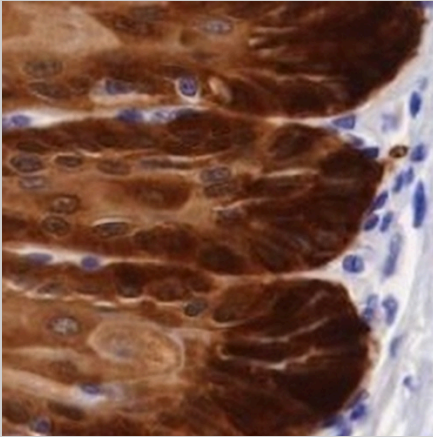
Description	Recombinant rabbit monoclonal antibody to ALDH3A1
Specificity	Recognizes endogenous levels of ALDH3A1 protein
Antibody Type	Primary antibody, Recombinant
Immunogen	Recombinant fusion protein of human ALDH3A1. The exact sequence is proprietary.
Purification	The antibody was purified by immunogen affinity chromatography.
Form/Buffer	Liquid in PBS, pH 7.4, containing 50% glycerol, 0.05% BSA and 0.01% sodium azide.
Alternative Names	ALDH3; Aldehyde dehydrogenase, dimeric NADP-preferring; ALDHIII; Aldehyde dehydrogenase 3; Aldehyde dehydrogenase family 3 member A1
Gene Symbol	ALDH3A1
Entrez Gene	218(Human)
SwissProt	P30838(Human)

\*AREX continuously optimizes our products. Webpage content may not reflect the latest updates. For inquiries, please contact [info@arexbio.com](mailto:info@arexbio.com) or your local distributor.

\*Clone Number, Reactivity, Source/Host and Clonality can be found in the product name and Key Features section above.

**DATASHEET****ALDH3A1 Rabbit Monoclonal Antibody(C640)**

CAT. NO. AMA00252

**DATA**

Immunohistochemical analysis of ALDH3A1 staining in human esophagus formalin fixed paraffin embedded tissue section. The section was pre-treated using heat mediated antigen retrieval with sodium citrate buffer (pH 6.0). The section was then incubated with the antibody at room temperature and detected using an HRP conjugated compact polymer system. DAB was used as the chromogen. The section was then counterstained with haematoxylin and mounted with DPX.

**STORAGE**

Store at 4°C short term. For long term storage, store at -20°C, avoiding freeze/thaw cycles.

**NOTE**

For Research Use Only. Not for diagnostic, therapeutics, prophylactic or in vivo use.