

DATASHEET

LYPD3 Rabbit Monoclonal Antibody(C650)

CAT. NO. AMA00262

KEY FEATURES

Target	LYPD3	Source / Host	Rabbit
Reactivity	Human	Clonality	Monoclonal
Applications	IHC	Conjugation	Unconjugated
Form / Buffer	Liquid in PBS, pH 7.4, containing 50% glycerol, 0.05% BSA and 0.01% sodium azide.	Storage	at-20°C

BACKGROUND

Supports cell migration. May be involved in urothelial cell-matrix interactions. May be involved in tumor progression.

APPLICATION

To ensure optimal assay performance, AREX recommends conducting reagent titration tailored to each testing system for optimal detection results.

IHC	1:100 - 1:500
-----	---------------

*Results are sample-specific. Please refer to your local assay conditions and test parameters for reference.

PRODUCT OVERVIEW

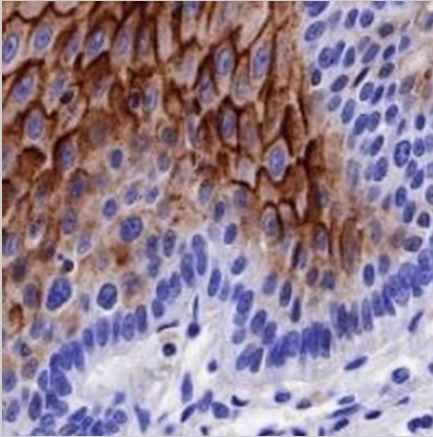
Description	Recombinant rabbit monoclonal antibody to LYPD3
Specificity	Recognizes endogenous levels of LYPD3 protein
Antibody Type	Primary antibody, Recombinant
Immunogen	Recombinant fusion protein of human LYPD3. The exact sequence is proprietary.
Purification	The antibody was purified by immunogen affinity chromatography.
Form/Buffer	Liquid in PBS, pH 7.4, containing 50% glycerol, 0.05% BSA and 0.01% sodium azide.
Alternative Names	C4.4A; Ly6/PLAUR domain-containing protein 3; GPI-anchored metastasis-associated protein C4.4A homolog; Matrigel-induced gene C4 protein; MIG-C4
Gene Symbol	LYPD3
Entrez Gene	27076(Human)
SwissProt	O95274(Human)

*AREX continuously optimizes our products. Webpage content may not reflect the latest updates. For inquiries, please contact info@arexbio.com or your local distributor.

*Clone Number, Reactivity, Source/Host and Clonality can be found in the product name and Key Features section above.

DATASHEET**LYPD3 Rabbit Monoclonal Antibody(C650)**

CAT. NO. AMA00262

DATA

Immunohistochemical analysis of LYPD3 staining in human esophagus formalin fixed paraffin embedded tissue section. The section was pre-treated using heat mediated antigen retrieval with sodium citrate buffer (pH 6.0). The section was then incubated with the antibody at room temperature and detected using an HRP conjugated compact polymer system. DAB was used as the chromogen. The section was then counterstained with haematoxylin and mounted with DPX.

STORAGE

Store at 4°C short term. For long term storage, store at -20°C, avoiding freeze/thaw cycles.

NOTE

For Research Use Only. Not for diagnostic, therapeutics, prophylactic or in vivo use.