

**DATASHEET**

**CD10 Rabbit Monoclonal Antibody(C658)**

CAT. NO. AMA00270

**KEY FEATURES**

Target	CD10	Source / Host	Rabbit
Reactivity	Human, Mouse, Rat	Clonality	Monoclonal
Applications	WB, IHC, IF/ICC	Conjugation	Unconjugated
Form / Buffer	Liquid in PBS, pH 7.4, containing 50% glycerol, 0.05% BSA and 0.01% sodium azide.	Storage	at-20°C

**BACKGROUND**

Thermolysin-like specificity, but is almost confined on acting on polypeptides of up to 30 amino acids . Biologically important in the destruction of opioid peptides such as Met- and Leu-enkephalins by cleavage of a Gly-Phe bond . Catalyzes cleavage of bradykinin, substance P and neurotensin peptides . Able to cleave angiotensin-1, angiotensin-2 and angiotensin 1-9 . Involved in the degradation of atrial natriuretic factor (ANF) and brain natriuretic factor (BNP(1-32)) . Displays UV-inducible elastase activity toward skin preelastic and elastic fibers .

**APPLICATION**

To ensure optimal assay performance, AREX recommends conducting reagent titration tailored to each testing system for optimal detection results.

WB	1:500 - 1:1000
IHC	1:100 - 1:500
IF/ICC	1:50 - 1:200

\*Results are sample-specific. Please refer to your local assay conditions and test parameters for reference.

**PRODUCT OVERVIEW**

Description	Recombinant rabbit monoclonal antibody to CD10
Specificity	Recognizes endogenous levels of CD10 protein
Antibody Type	Primary antibody, Recombinant
Immunogen	Recombinant fusion protein of human CD10. The exact sequence is proprietary.
Purification	The antibody was purified by immunogen affinity chromatography.
Molecular Weight	Predicted: 85 kD; Observed: 100 kD
Form/Buffer	Liquid in PBS, pH 7.4, containing 50% glycerol, 0.05% BSA and 0.01% sodium azide.
Alternative Names	EPN; Neprilysin; Atriopeptidase; Common acute lymphocytic leukemia antigen; CALLA; Enkephalinase; Neutral endopeptidase 24.11; NEP; Neutral endopeptidase; Skin fibroblast elastase; SFE; CD10
Gene Symbol	MME
Entrez Gene	4311(Human); 17380(Mouse); 24590(Rat)
SwissProt	P08473(Human); Q61391(Mouse); P07861(Rat)

\*AREX continuously optimizes our products. Webpage content may not reflect the latest updates. For inquiries, please contact [info@arexbio.com](mailto:info@arexbio.com) or your local distributor.

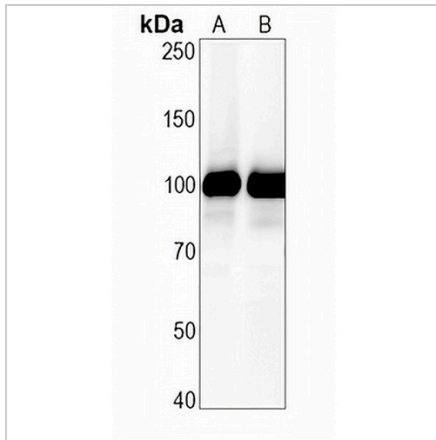
\*Clone Number, Reactivity, Source/Host and Clonality can be found in the product name and Key Features section above.

**DATASHEET**

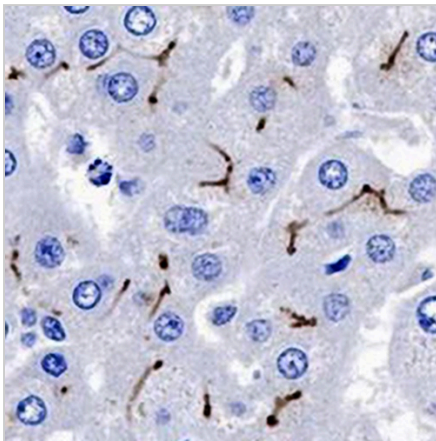
**CD10 Rabbit Monoclonal Antibody(C658)**

CAT. NO. AMA00270

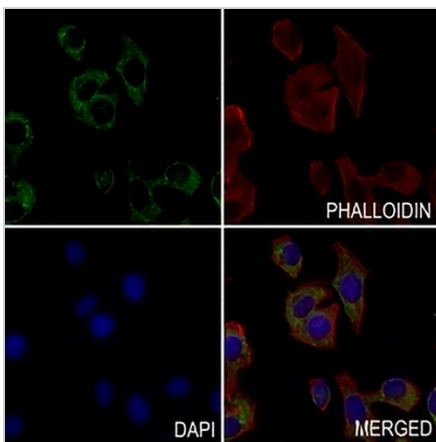
**DATA**



Western blot analysis of CD10 expression in mouse kidney (A), rat kidney (B) whole cell lysates. (Predicted band size: 85 kD; Observed band size: 100 kD)



Immunohistochemical analysis of CD10 staining in human liver formalin fixed paraffin embedded tissue section. The section was pre-treated using heat mediated antigen retrieval with sodium citrate buffer (pH 6.0). The section was then incubated with the antibody at room temperature and detected using an HRP conjugated compact polymer system. DAB was used as the chromogen. The section was then counterstained with haematoxylin and mounted with DPX.



Immunofluorescent analysis of CD10 staining in HepG2 cells. Formalin-fixed cells were permeabilized with 0.1% Triton X-100 in TBS for 5-10 minutes and blocked with 3% BSA-PBS for 30 minutes at room temperature. Cells were probed with the primary antibody in 3% BSA-PBS and incubated overnight at 4 °C in a humidified chamber. Cells were washed with PBST and incubated with an AREX® Fluor 488 -conjugated secondary antibody (green) in PBS at room temperature in the dark. Phalloidin - AREX® Fluor 594 was used to stain Actin filaments (red). DAPI was used to stain the cell nuclei (blue).

**STORAGE**

Store at 4°C short term. For long term storage, store at -20°C, avoiding freeze/thaw cycles.

**NOTE**

For Research Use Only. Not for diagnostic, therapeutics, prophylactic or in vivo use.