

DATASHEET

CD31 Rabbit Monoclonal Antibody(C673)

CAT. NO. AMA00285

KEY FEATURES

Target	CD31	Source / Host	Rabbit
Reactivity	Human	Clonality	Monoclonal
Applications	WB, IHC	Conjugation	Unconjugated
Form / Buffer	Liquid in PBS, pH 7.4, containing 50% glycerol, 0.05% BSA and 0.01% sodium azide.	Storage	at-20°C

BACKGROUND

Cell adhesion molecule which is required for leukocyte transendothelial migration (TEM) under most inflammatory conditions under most inflammatory conditions . Tyr-690 plays a critical role in TEM and is required for efficient trafficking of PECAM1 to and from the lateral border recycling compartment (LBRC) and is also essential for the LBRC membrane to be targeted around migrating leukocytes . Trans-homophilic interaction may play a role in endothelial cell-cell adhesion via cell junctions . Heterophilic interaction with CD177 plays a role in transendothelial migration of neutrophils . Homophilic ligation of PECAM1 prevents macrophage-mediated phagocytosis of neighboring viable leukocytes by transmitting a detachment signal .

APPLICATION

To ensure optimal assay performance, AREX recommends conducting reagent titration tailored to each testing system for optimal detection results.

WB	1:500 - 1:1000
IHC	1:100 - 1:500

*Results are sample-specific. Please refer to your local assay conditions and test parameters for reference.

PRODUCT OVERVIEW

Description	Recombinant rabbit monoclonal antibody to CD31
Specificity	Recognizes endogenous levels of CD31 protein
Antibody Type	Primary antibody, Recombinant
Immunogen	Recombinant fusion protein of human CD31. The exact sequence is proprietary.
Purification	The antibody was purified by immunogen affinity chromatography.
Molecular Weight	Predicted: 82 kD; Observed: 180 kD
Form/Buffer	Liquid in PBS, pH 7.4, containing 50% glycerol, 0.05% BSA and 0.01% sodium azide.
Alternative Names	Platelet endothelial cell adhesion molecule; PECAM-1; EndoCAM; GPIIA; PECA1; CD31
Gene Symbol	PECAM1
Entrez Gene	5175(Human)
SwissProt	P16284(Human)

*AREX continuously optimizes our products. Webpage content may not reflect the latest updates. For inquiries, please contact info@arexbio.com or your local distributor.

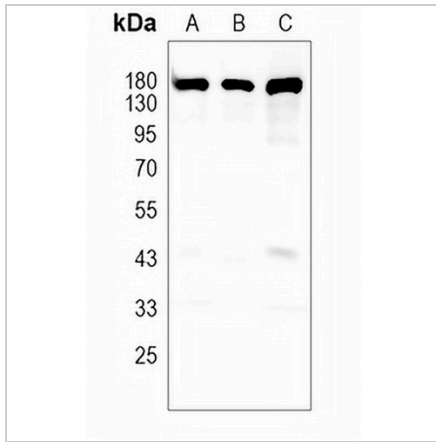
*Clone Number, Reactivity, Source/Host and Clonality can be found in the product name and Key Features section above.

DATASHEET

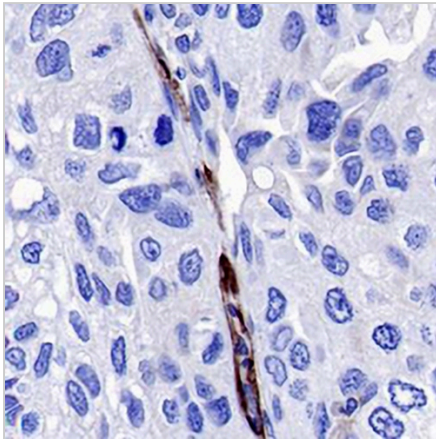
CD31 Rabbit Monoclonal Antibody(C673)

CAT. NO. AMA00285

DATA



Western blot analysis of CD31 expression in A2780 (A), MG63 (B), HUT78 (C) whole cell lysates. (Predicted band size: 82 kD; Observed band size: 180 kD)



Immunohistochemical analysis of CD31 staining in human lung squamous cell cancer formalin fixed paraffin embedded tissue section. The section was pre-treated using heat mediated antigen retrieval with sodium citrate buffer (pH 6.0). The section was then incubated with the antibody at room temperature and detected using an HRP conjugated compact polymer system. DAB was used as the chromogen. The section was then counterstained with haematoxylin and mounted with DPX.

STORAGE

Store at 4°C short term. For long term storage, store at -20°C, avoiding freeze/thaw cycles.

NOTE

For Research Use Only. Not for diagnostic, therapeutics, prophylactic or in vivo use.