

DATASHEET

Galectin 1 Rabbit Monoclonal Antibody(C705)

CAT. NO. AMA00317

KEY FEATURES

| | | | |
|---------------|---|---------------|--------------|
| Target | Galectin 1 | Source / Host | Rabbit |
| Reactivity | Human | Clonality | Monoclonal |
| Applications | IHC | Conjugation | Unconjugated |
| Form / Buffer | Liquid in PBS, pH 7.4, containing 50% glycerol, 0.05% BSA and 0.01% sodium azide. | Storage | at-20°C |

BACKGROUND

Lectin that binds beta-galactoside and a wide array of complex carbohydrates. Plays a role in regulating apoptosis, cell proliferation and cell differentiation. Inhibits CD45 protein phosphatase activity and therefore the dephosphorylation of Lyn kinase. Strong inducer of T-cell apoptosis. Plays a negative role in Th17 cell differentiation via activation of the receptor CD69 .

APPLICATION

To ensure optimal assay performance, AREX recommends conducting reagent titration tailored to each testing system for optimal detection results.

| | |
|-----|---------------|
| IHC | 1:100 - 1:500 |
|-----|---------------|

*Results are sample-specific. Please refer to your local assay conditions and test parameters for reference.

PRODUCT OVERVIEW

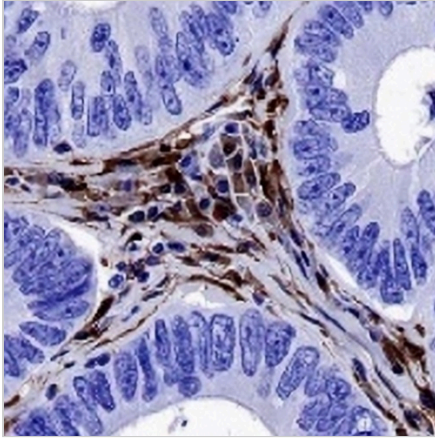
| | |
|-------------------|---|
| Description | Recombinant rabbit monoclonal antibody to Galectin 1 |
| Specificity | Recognizes endogenous levels of Galectin 1 protein |
| Antibody Type | Primary antibody, Recombinant |
| Immunogen | Recombinant fusion protein of human Galectin 1. The exact sequence is proprietary. |
| Purification | The antibody was purified by immunogen affinity chromatography. |
| Form/Buffer | Liquid in PBS, pH 7.4, containing 50% glycerol, 0.05% BSA and 0.01% sodium azide. |
| Alternative Names | Galectin-1; Gal-1; 14 kDa laminin-binding protein; HLBP14; 14 kDa lectin; Beta-galactoside-binding lectin L-14-I; Galaptin; HBL; HPL; Lactose-binding lectin 1; Lectin galactoside-binding soluble 1; Putative MAPK-activating protein PM12; S-Lac lectin 1 |
| Gene Symbol | LGALS1 |
| Entrez Gene | 3956(Human) |
| SwissProt | P09382(Human) |

*AREX continuously optimizes our products. Webpage content may not reflect the latest updates. For inquiries, please contact info@arexbio.com or your local distributor.

*Clone Number, Reactivity, Source/Host and Clonality can be found in the product name and Key Features section above.

DATASHEET**Galectin 1 Rabbit Monoclonal Antibody(C705)**

CAT. NO. AMA00317

DATA

Immunohistochemical analysis of Galectin 1 staining in human colon cancer formalin fixed paraffin embedded tissue section. The section was pre-treated using heat mediated antigen retrieval with sodium citrate buffer (pH 6.0). The section was then incubated with the antibody at room temperature and detected using an HRP conjugated compact polymer system. DAB was used as the chromogen. The section was then counterstained with haematoxylin and mounted with DPX.

STORAGE

Store at 4°C short term. For long term storage, store at -20°C, avoiding freeze/thaw cycles.

NOTE

For Research Use Only. Not for diagnostic, therapeutics, prophylactic or in vivo use.