

DATASHEET

GLUT1 Rabbit Monoclonal Antibody(C707)

CAT. NO. AMA00319

KEY FEATURES

| | | | |
|---------------|---|---------------|--------------|
| Target | GLUT1 | Source / Host | Rabbit |
| Reactivity | Human, Mouse, Rat | Clonality | Monoclonal |
| Applications | WB, IHC | Conjugation | Unconjugated |
| Form / Buffer | Liquid in PBS, pH 7.4, containing 50% glycerol, 0.05% BSA and 0.01% sodium azide. | Storage | at-20°C |

BACKGROUND

Facilitative glucose transporter, which is responsible for constitutive or basal glucose uptake . Has a very broad substrate specificity; can transport a wide range of aldoses including both pentoses and hexoses . Most important energy carrier of the brain: present at the blood-brain barrier and assures the energy-independent, facilitative transport of glucose into the brain . In association with BSG and NXNL1, promotes retinal cone survival by increasing glucose uptake into photoreceptors . Required for mesendoderm differentiation .

APPLICATION

To ensure optimal assay performance, AREX recommends conducting reagent titration tailored to each testing system for optimal detection results.

| | |
|-----|----------------|
| WB | 1:500 - 1:1000 |
| IHC | 1:100 - 1:500 |

*Results are sample-specific. Please refer to your local assay conditions and test parameters for reference.

PRODUCT OVERVIEW

| | |
|-------------------|--|
| Description | Recombinant rabbit monoclonal antibody to GLUT1 |
| Specificity | Recognizes endogenous levels of GLUT1 protein |
| Antibody Type | Primary antibody, Recombinant |
| Immunogen | Recombinant fusion protein of human GLUT1. The exact sequence is proprietary. |
| Purification | The antibody was purified by immunogen affinity chromatography. |
| Molecular Weight | Predicted: 54 kD; Observed: 50-130 kD |
| Form/Buffer | Liquid in PBS, pH 7.4, containing 50% glycerol, 0.05% BSA and 0.01% sodium azide. |
| Alternative Names | GLUT1; Solute carrier family 2, facilitated glucose transporter member 1; Glucose transporter type 1, erythrocyte/brain; GLUT-1; HepG2 glucose transporter |
| Gene Symbol | SLC2A1 |
| Entrez Gene | 6513(Human) |
| SwissProt | P11166(Human) |

*AREX continuously optimizes our products. Webpage content may not reflect the latest updates. For inquiries, please contact info@arexbio.com or your local distributor.

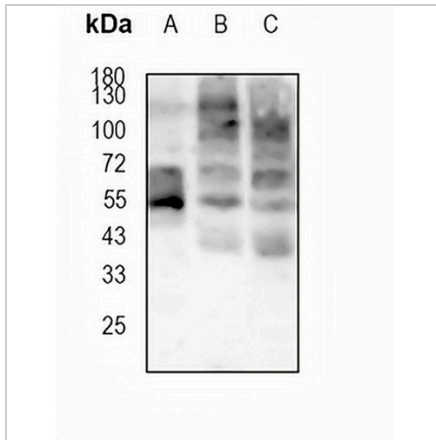
*Clone Number, Reactivity, Source/Host and Clonality can be found in the product name and Key Features section above.

DATASHEET

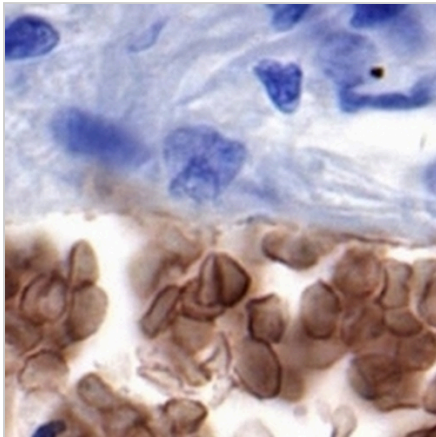
GLUT1 Rabbit Monoclonal Antibody(C707)

CAT. NO. AMA00319

DATA



Western blot analysis of GLUT1 expression in Hela (A), mouse brain (B), rat brain (C) whole cell lysates. (Predicted band size: 54 kD; Observed band size: 50-130 kD)



Immunohistochemical analysis of GLUT1 staining in human lung formalin fixed paraffin embedded tissue section. The section was pre-treated using heat mediated antigen retrieval with sodium citrate buffer (pH 6.0). The section was then incubated with the antibody at room temperature and detected using an HRP conjugated compact polymer system. DAB was used as the chromogen. The section was then counterstained with haematoxylin and mounted with DPX.

STORAGE

Store at 4°C short term. For long term storage, store at -20°C, avoiding freeze/thaw cycles.

NOTE

For Research Use Only. Not for diagnostic, therapeutics, prophylactic or in vivo use.