

DATASHEET

ENT1 Rabbit Monoclonal Antibody(C709)

CAT. NO. AMA00321

KEY FEATURES

Target	ENT1	Source / Host	Rabbit
Reactivity	Human	Clonality	Monoclonal
Applications	WB, IHC	Conjugation	Unconjugated
Form / Buffer	Liquid in PBS, pH 7.4, containing 50% glycerol, 0.05% BSA and 0.01% sodium azide.	Storage	at-20°C

BACKGROUND

Uniporter involved in the facilitative transport of nucleosides and nucleobases, and contributes to maintaining their cellular homeostasis . Functions as a Na(+)-independent transporter . Involved in the transport of nucleosides such as adenosine, guanosine, inosine, uridine, thymidine and cytidine . Also transports purine nucleobases (hypoxanthine, adenine, guanine) and pyrimidine nucleobases (thymine, uracil) . Mediates basolateral nucleoside uptake into Sertoli cells, thereby regulating the transport of nucleosides in testis across the blood-testis barrier . Regulates inosine levels in brown adipocytes tissues (BAT) and extracellular inosine levels, which controls BAT-dependent energy expenditure .

APPLICATION

To ensure optimal assay performance, AREX recommends conducting reagent titration tailored to each testing system for optimal detection results.

WB	1:500 - 1:1000
IHC	1:100 - 1:500

*Results are sample-specific. Please refer to your local assay conditions and test parameters for reference.

PRODUCT OVERVIEW

Description	Recombinant rabbit monoclonal antibody to ENT1
Specificity	Recognizes endogenous levels of ENT1 protein
Antibody Type	Primary antibody, Recombinant
Immunogen	Recombinant fusion protein of human ENT1. The exact sequence is proprietary.
Purification	The antibody was purified by immunogen affinity chromatography.
Molecular Weight	Predicted: 50 kD; Observed: 50 kD
Form/Buffer	Liquid in PBS, pH 7.4, containing 50% glycerol, 0.05% BSA and 0.01% sodium azide.
Alternative Names	ENT1; Equilibrative nucleoside transporter 1; Equilibrative nitrobenzylmercaptapurine riboside-sensitive nucleoside transporter; Equilibrative NBMPR-sensitive nucleoside transporter; Nucleoside transporter, es-type; Solute carrier family 29 member 1
Gene Symbol	SLC29A1
Entrez Gene	2030(Human)
SwissProt	Q99808(Human)

*AREX continuously optimizes our products. Webpage content may not reflect the latest updates. For inquiries, please contact info@arexbio.com or your local distributor.

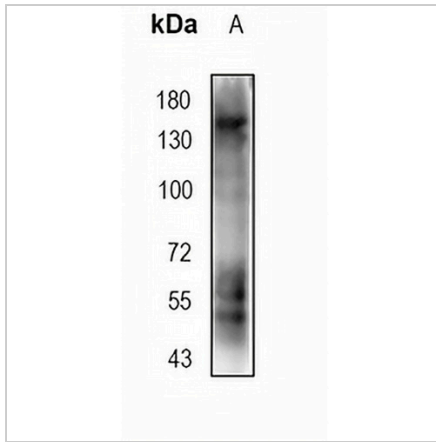
*Clone Number, Reactivity, Source/Host and Clonality can be found in the product name and Key Features section above.

DATASHEET

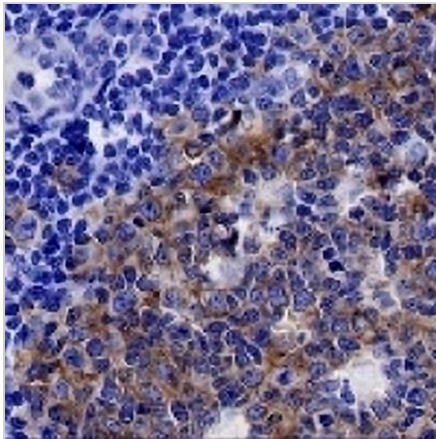
ENT1 Rabbit Monoclonal Antibody(C709)

CAT. NO. AMA00321

DATA



Western blot analysis of ENT1 expression in A2780 (A) whole cell lysates. (Predicted band size: 50 kD; Observed band size: 50 kD)



Immunohistochemical analysis of ENT1 staining in human tonsil formalin fixed paraffin embedded tissue section. The section was pre-treated using heat mediated antigen retrieval with sodium citrate buffer (pH 6.0). The section was then incubated with the antibody at room temperature and detected using an HRP conjugated compact polymer system. DAB was used as the chromogen. The section was then counterstained with haematoxylin and mounted with DPX.

STORAGE

Store at 4°C short term. For long term storage, store at -20°C, avoiding freeze/thaw cycles.

NOTE

For Research Use Only. Not for diagnostic, therapeutics, prophylactic or in vivo use.