

DATASHEET

Cytokeratin 10 Rabbit Monoclonal Antibody(C716)

CAT. NO. AMA00328

KEY FEATURES

Target	Cytokeratin 10	Source / Host	Rabbit
Reactivity	Human	Clonality	Monoclonal
Applications	IHC	Conjugation	Unconjugated
Form / Buffer	Liquid in PBS, pH 7.4, containing 50% glycerol, 0.05% BSA and 0.01% sodium azide.	Storage	at-20°C

BACKGROUND

Plays a role in the establishment of the epidermal barrier on plantar skin . Involved in the maintenance of cell layer development and keratin filament bundles in suprabasal cells of the epithelium .

APPLICATION

To ensure optimal assay performance, AREX recommends conducting reagent titration tailored to each testing system for optimal detection results.

IHC	1:100 - 1:500
-----	---------------

*Results are sample-specific. Please refer to your local assay conditions and test parameters for reference.

PRODUCT OVERVIEW

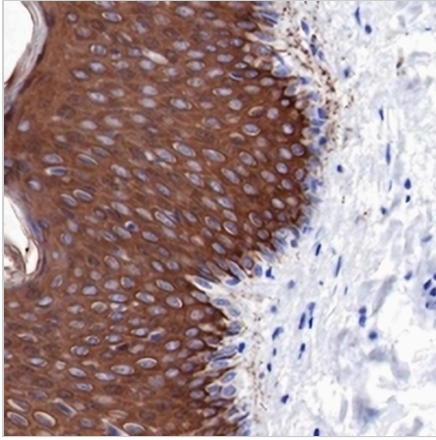
Description	Recombinant rabbit monoclonal antibody to Cytokeratin 10
Specificity	Recognizes endogenous levels of Cytokeratin 10 protein
Antibody Type	Primary antibody, Recombinant
Immunogen	Recombinant fusion protein of human Cytokeratin 10. The exact sequence is proprietary.
Purification	The antibody was purified by immunogen affinity chromatography.
Form/Buffer	Liquid in PBS, pH 7.4, containing 50% glycerol, 0.05% BSA and 0.01% sodium azide.
Alternative Names	KPP; Keratin, type I cytoskeletal 10; Cytokeratin-10; CK-10; Keratin-10; K10
Gene Symbol	KRT10
Entrez Gene	3858(Human)
SwissProt	P13645(Human)

*AREX continuously optimizes our products. Webpage content may not reflect the latest updates. For inquiries, please contact info@arexbio.com or your local distributor.

*Clone Number, Reactivity, Source/Host and Clonality can be found in the product name and Key Features section above.

DATASHEET**Cytokeratin 10 Rabbit Monoclonal Antibody(C716)**

CAT. NO. AMA00328

DATA

Immunohistochemical analysis of Cytokeratin 10 staining in human skin formalin fixed paraffin embedded tissue section. The section was pre-treated using heat mediated antigen retrieval with sodium citrate buffer (pH 6.0). The section was then incubated with the antibody at room temperature and detected using an HRP conjugated compact polymer system. DAB was used as the chromogen. The section was then counterstained with haematoxylin and mounted with DPX.

STORAGE

Store at 4°C short term. For long term storage, store at -20°C, avoiding freeze/thaw cycles.

NOTE

For Research Use Only. Not for diagnostic, therapeutics, prophylactic or in vivo use.