

## DATASHEET

# Lambda Light Chain Rabbit Monoclonal Antibody(C723)

CAT. NO. AMA00335

### KEY FEATURES

Target	Lambda Light Chain	Source / Host	Rabbit
Reactivity	Human	Clonality	Monoclonal
Applications	WB, IHC	Conjugation	Unconjugated
Form / Buffer	Liquid in PBS, pH 7.4, containing 50% glycerol, 0.05% BSA and 0.01% sodium azide.	Storage	at-20°C

### BACKGROUND

Immunoglobulin lambda light chain is one of two light chain types (kappa and lambda) found in mammalian antibodies. It pairs with a heavy chain to form a complete immunoglobulin molecule. Anti-lambda antibodies are used in IHC and FACS to differentiate B-cell populations and to assess clonality in lymphoproliferative disorders, where a skewed kappa/lambda ratio is diagnostic of B-cell neoplasia.

### APPLICATION

To ensure optimal assay performance, AREX recommends conducting reagent titration tailored to each testing system for optimal detection results.

WB	1:500 - 1:1000
IHC	1:500 - 1:2000

\*Results are sample-specific. Please refer to your local assay conditions and test parameters for reference.

### PRODUCT OVERVIEW

Description	Recombinant rabbit monoclonal antibody to Lambda Light Chain
Specificity	Recognizes endogenous levels of Lambda Light Chain protein
Antibody Type	Primary antibody, Recombinant
Immunogen	Recombinant fusion protein of human Lambda Light Chain. The exact sequence is proprietary.
Purification	The antibody was purified by immunogen affinity chromatography.
Molecular Weight	Predicted: 25 kD; Observed: 25 kD
Form/Buffer	Liquid in PBS, pH 7.4, containing 50% glycerol, 0.05% BSA and 0.01% sodium azide.

\*AREX continuously optimizes our products. Webpage content may not reflect the latest updates. For inquiries, please contact [info@arexbio.com](mailto:info@arexbio.com) or your local distributor.

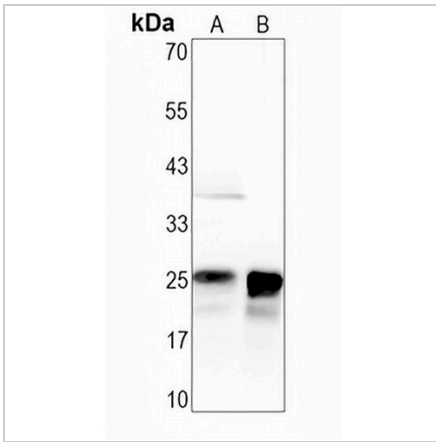
\*Clone Number, Reactivity, Source/Host and Clonality can be found in the product name and Key Features section above.

**DATASHEET**

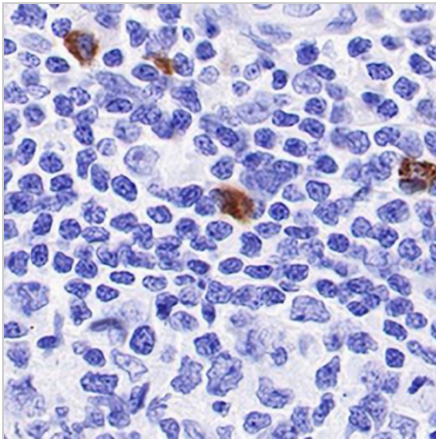
**Lambda Light Chain Rabbit Monoclonal Antibody(C723)**

CAT. NO. AMA00335

**DATA**



Western blot analysis of Lambda Light Chain expression in A2780 (A), MG63 (B) whole cell lysates. (Predicted band size: 25 kD; Observed band size: 25 kD)



Immunohistochemical analysis of Lambda Light Chain staining in human tonsil formalin fixed paraffin embedded tissue section. The section was pre-treated using heat mediated antigen retrieval with sodium citrate buffer (pH 6.0). The section was then incubated with the antibody at room temperature and detected using an HRP conjugated compact polymer system. DAB was used as the chromogen. The section was then counterstained with haematoxylin and mounted with DPX.

**STORAGE**

Store at 4°C short term. For long term storage, store at -20°C, avoiding freeze/thaw cycles.

**NOTE**

For Research Use Only. Not for diagnostic, therapeutics, prophylactic or in vivo use.