

DATASHEET

NaPi-2b Rabbit Monoclonal Antibody(C730)

CAT. NO. AMA00342

KEY FEATURES

Target	NaPi-2b	Source / Host	Rabbit
Reactivity	Human	Clonality	Monoclonal
Applications	IHC	Conjugation	Unconjugated
Form / Buffer	Liquid in PBS, pH 7.4, containing 50% glycerol, 0.05% BSA and 0.01% sodium azide.	Storage	at-20°C

BACKGROUND

Involved in actively transporting phosphate into cells via Na(+) cotransport.

APPLICATION

To ensure optimal assay performance, AREX recommends conducting reagent titration tailored to each testing system for optimal detection results.

IHC	1:100 - 1:500
-----	---------------

*Results are sample-specific. Please refer to your local assay conditions and test parameters for reference.

PRODUCT OVERVIEW

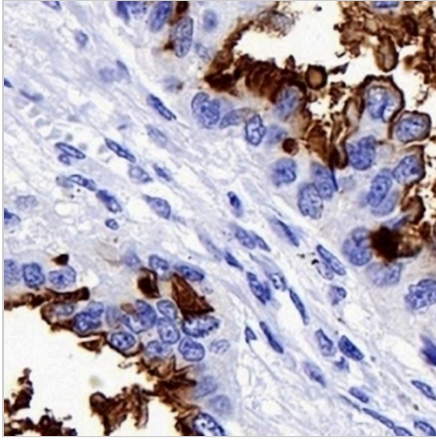
Description	Recombinant rabbit monoclonal antibody to NaPi-2b
Specificity	Recognizes endogenous levels of NaPi-2b protein
Antibody Type	Primary antibody, Recombinant
Immunogen	Recombinant fusion protein of human NaPi-2b. The exact sequence is proprietary.
Purification	The antibody was purified by immunogen affinity chromatography.
Form/Buffer	Liquid in PBS, pH 7.4, containing 50% glycerol, 0.05% BSA and 0.01% sodium azide.
Alternative Names	Sodium-dependent phosphate transport protein 2B; Sodium-phosphate transport protein 2B; Na(+)-dependent phosphate cotransporter 2B; NaPi3b; Sodium/phosphate cotransporter 2B; Na(+)/Pi cotransporter 2B; NaPi-2b; Solute carrier family 34 member 2
Gene Symbol	SLC34A2
Entrez Gene	10568(Human)
SwissProt	O95436(Human)

*AREX continuously optimizes our products. Webpage content may not reflect the latest updates. For inquiries, please contact info@arexbio.com or your local distributor.

*Clone Number, Reactivity, Source/Host and Clonality can be found in the product name and Key Features section above.

DATASHEET**NaPi-2b Rabbit Monoclonal Antibody(C730)**

CAT. NO. AMA00342

DATA

Immunohistochemical analysis of NaPi-2b staining in human lung adenocarcinoma formalin fixed paraffin embedded tissue section. The section was pre-treated using heat mediated antigen retrieval with sodium citrate buffer (pH 6.0). The section was then incubated with the antibody at room temperature and detected using an HRP conjugated compact polymer system. DAB was used as the chromogen. The section was then counterstained with haematoxylin and mounted with DPX.

STORAGE

Store at 4°C short term. For long term storage, store at -20°C, avoiding freeze/thaw cycles.

NOTE

For Research Use Only. Not for diagnostic, therapeutics, prophylactic or in vivo use.