

## DATASHEET

# Progesterone Receptor Rabbit Monoclonal Antibody(C741)

CAT. NO. AMA00353

### KEY FEATURES

Target	Progesterone Receptor	Source / Host	Rabbit
Reactivity	Human	Clonality	Monoclonal
Applications	WB, IHC	Conjugation	Unconjugated
Form / Buffer	Liquid in PBS, pH 7.4, containing 50% glycerol, 0.05% BSA and 0.01% sodium azide.	Storage	at-20°C

### BACKGROUND

The steroid hormones and their receptors are involved in the regulation of eukaryotic gene expression and affect cellular proliferation and differentiation in target tissues. Depending on the isoform, progesterone receptor functions as a transcriptional activator or repressor.

### APPLICATION

To ensure optimal assay performance, AREX recommends conducting reagent titration tailored to each testing system for optimal detection results.

WB	1:500 - 1:1000
IHC	1:100 - 1:500

\*Results are sample-specific. Please refer to your local assay conditions and test parameters for reference.

### PRODUCT OVERVIEW

Description	Recombinant rabbit monoclonal antibody to Progesterone Receptor
Specificity	Recognizes endogenous levels of Progesterone Receptor protein
Antibody Type	Primary antibody, Recombinant
Immunogen	Recombinant fusion protein of human Progesterone Receptor. The exact sequence is proprietary.
Purification	The antibody was purified by immunogen affinity chromatography.
Molecular Weight	Predicted: 98 kD; Observed: 98 kD
Form/Buffer	Liquid in PBS, pH 7.4, containing 50% glycerol, 0.05% BSA and 0.01% sodium azide.
Alternative Names	NR3C3; Progesterone receptor; PR; Nuclear receptor subfamily 3 group C member 3
Gene Symbol	PGR
Entrez Gene	5241(Human)
SwissProt	P06401(Human); Q00175(Mouse)

\*AREX continuously optimizes our products. Webpage content may not reflect the latest updates. For inquiries, please contact [info@arexbio.com](mailto:info@arexbio.com) or your local distributor.

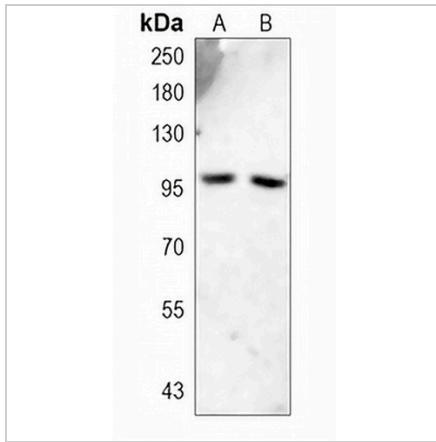
\*Clone Number, Reactivity, Source/Host and Clonality can be found in the product name and Key Features section above.

**DATASHEET**

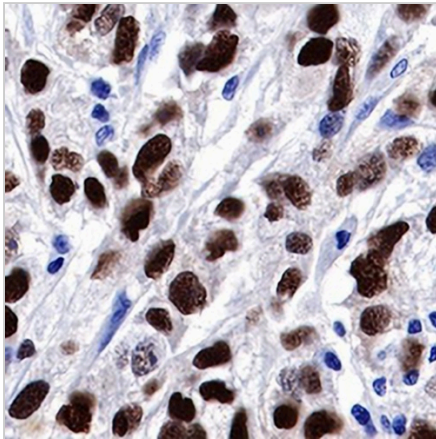
**Progesterone Receptor Rabbit Monoclonal Antibody(C741)**

CAT. NO. AMA00353

**DATA**



Western blot analysis of Progesterone Receptor expression in MCF7 (A), A2780 (B) whole cell lysates. (Predicted band size: 98 kD; Observed band size: 98 kD)



Immunohistochemical analysis of Progesterone Receptor staining in human breast cancer formalin fixed paraffin embedded tissue section. The section was pre-treated using heat mediated antigen retrieval with sodium citrate buffer (pH 6.0). The section was then incubated with the antibody at room temperature and detected using an HRP conjugated compact polymer system. DAB was used as the chromogen. The section was then counterstained with haematoxylin and mounted with DPX.

**STORAGE**

Store at 4°C short term. For long term storage, store at -20°C, avoiding freeze/thaw cycles.

**NOTE**

For Research Use Only. Not for diagnostic, therapeutics, prophylactic or in vivo use.