

DATASHEET

PSMC5 Rabbit Monoclonal Antibody(C773)

CAT. NO. AMA00385

KEY FEATURES

| | | | |
|---------------|---|---------------|--------------|
| Target | PSMC5 | Source / Host | Rabbit |
| Reactivity | Human, Mouse, Rat | Clonality | Monoclonal |
| Applications | WB, IHC, IF/ICC | Conjugation | Unconjugated |
| Form / Buffer | Liquid in PBS, pH 7.4, containing 50% glycerol, 0.05% BSA and 0.01% sodium azide. | Storage | at-20°C |

BACKGROUND

Component of the 26S proteasome, a multiprotein complex involved in the ATP-dependent degradation of ubiquitinated proteins. This complex plays a key role in the maintenance of protein homeostasis by removing misfolded or damaged proteins, which could impair cellular functions, and by removing proteins whose functions are no longer required. Therefore, the proteasome participates in numerous cellular processes, including cell cycle progression, apoptosis, or DNA damage repair. PSMC5 belongs to the heterohexameric ring of AAA (ATPases associated with diverse cellular activities) proteins that unfolds ubiquitinated target proteins that are concurrently translocated into a proteolytic chamber and degraded into peptides.

APPLICATION

To ensure optimal assay performance, AREX recommends conducting reagent titration tailored to each testing system for optimal detection results.

| | |
|--------|----------------|
| WB | 1:500 - 1:1000 |
| IHC | 1:50 - 1:200 |
| IF/ICC | 1:50 - 1:200 |

*Results are sample-specific. Please refer to your local assay conditions and test parameters for reference.

PRODUCT OVERVIEW

| | |
|-------------------|--|
| Description | Recombinant rabbit monoclonal antibody to PSMC5 |
| Specificity | Recognizes endogenous levels of PSMC5 protein |
| Antibody Type | Primary antibody, Recombinant |
| Immunogen | KLH-conjugated synthetic peptide encompassing a sequence within the center region of human PSMC5. The exact sequence is proprietary. |
| Purification | This antibody is purified through a protein G column. |
| Molecular Weight | Predicted: 45, 44 kD; Observed: 45 kD |
| Form/Buffer | Liquid in PBS, pH 7.4, containing 50% glycerol, 0.05% BSA and 0.01% sodium azide. |
| Alternative Names | SUG1; 26S protease regulatory subunit 8; 26S proteasome AAA-ATPase subunit RPT6; Proteasome 26S subunit ATPase 5; Proteasome subunit p45; Thyroid hormone receptor-interacting protein 1; TRIP1; p45/SUG |
| Gene Symbol | PSMC5 |
| Entrez Gene | 5705(Human); 19184(Mouse); 81827(Rat) |
| SwissProt | P62195(Human); P62196(Mouse); P62198(Rat) |

*AREX continuously optimizes our products. Webpage content may not reflect the latest updates. For inquiries, please contact info@arexbio.com or your local distributor.

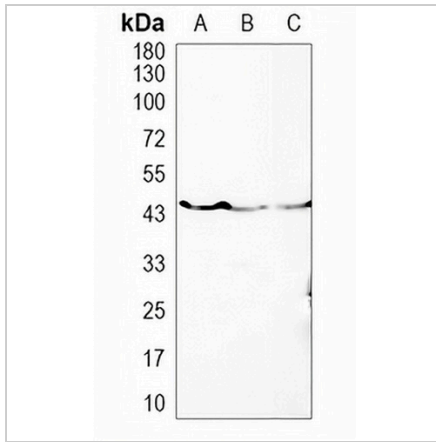
*Clone Number, Reactivity, Source/Host and Clonality can be found in the product name and Key Features section above.

DATASHEET

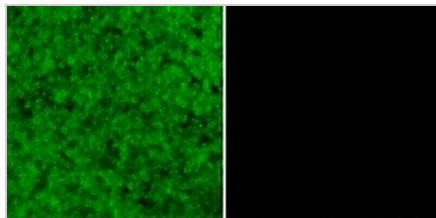
PSMC5 Rabbit Monoclonal Antibody(C773)

CAT. NO. AMA00385

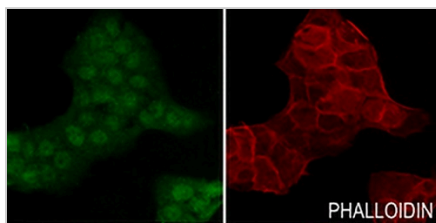
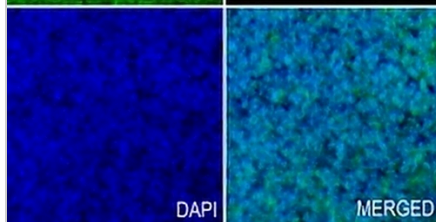
DATA



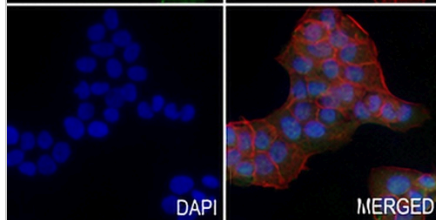
Western blot analysis of PSMC5 expression in HuT78 (A), mouse liver (B), rat liver (C) whole cell lysates. (Predicted band size: 45, 44 kD; Observed band size: 45 kD)



Immunohistochemical analysis of PSMC5 staining in human tonsil formalin fixed paraffin embedded tissue section. The section was pre-treated using heat mediated antigen retrieval with sodium citrate buffer (pH 6.0). The section was then incubated with the antibody at room temperature and detected using an HRP conjugated compact polymer system. Tyramide-AREX® Fluor 488 (green) was used as the chromogen. The section was then counterstained with DAPI (blue).



Immunofluorescent analysis of PSMC5 staining in HIOEC cells. Formalin-fixed cells were permeabilized with 0.1% Triton X-100 in TBS for 5-10 minutes and blocked with 3% BSA-PBS for 30 minutes at room temperature. Cells were probed with the primary antibody in 3% BSA-PBS and incubated overnight at 4 °C in a hidified chamber. Cells were washed with PBST and incubated with a AREX® Fluor 488 -conjugated secondary antibody (green) in PBS at room temperature in the dark. Phalloidin - AREX® Fluor 594 was used to stain Actin filaments (red). DAPI was used to stain the cell nuclei (blue).



STORAGE

Store at 4°C short term. For long term storage, store at -20°C, avoiding freeze/thaw cycles.

NOTE

For Research Use Only. Not for diagnostic, therapeutics, prophylactic or in vivo use.