

**DATASHEET**
**PEX7 Rabbit Monoclonal Antibody(C775)**
**CAT. NO. AMA00387**
**KEY FEATURES**

Target	PEX7	Source / Host	Rabbit
Reactivity	Human, Mouse, Rat	Clonality	Monoclonal
Applications	WB, IHC, IF/ICC	Conjugation	Unconjugated
Form / Buffer	Liquid in PBS, pH 7.4, containing 50% glycerol, 0.05% BSA and 0.01% sodium azide.	Storage	at-20°C

**BACKGROUND**

Receptor required for the peroxisomal import of proteins containing a C-terminal PTS2-type peroxisomal targeting signal . Specifically binds to cargo proteins containing a PTS2 peroxisomal targeting signal in the cytosol . Cargo protein-binding triggers interaction with PEX5 and formation of a ternary complex composed of PEX5 and PEX7 along with PTS2-containing cargo proteins, which is translocated into peroxisomes by passing through the PEX13-PEX14 docking complex .

**APPLICATION**

To ensure optimal assay performance, AREX recommends conducting reagent titration tailored to each testing system for optimal detection results.

WB	1:1000 - 1:2000
IHC	1:50 - 1:200
IF/ICC	1:50 - 1:200

\*Results are sample-specific. Please refer to your local assay conditions and test parameters for reference.

**PRODUCT OVERVIEW**

Description	Recombinant rabbit monoclonal antibody to PEX7
Specificity	Recognizes endogenous levels of PEX7 protein
Antibody Type	Primary antibody, Recombinant
Immunogen	KLH-conjugated synthetic peptide encompassing a sequence within the center region of human PEX7. The exact sequence is proprietary.
Purification	This antibody is purified through a protein G column.
Molecular Weight	Predicted: 36 kD; Observed: 36 kD
Form/Buffer	Liquid in PBS, pH 7.4, containing 50% glycerol, 0.05% BSA and 0.01% sodium azide.
Alternative Names	PTS2R; Peroxisomal targeting signal 2 receptor; PTS2 receptor; Peroxin-7
Gene Symbol	PEX7
Entrez Gene	5191(Human); 18634(Mouse)
SwissProt	O00628(Human); P97865(Mouse)

\*AREX continuously optimizes our products. Webpage content may not reflect the latest updates. For inquiries, please contact [info@arexbio.com](mailto:info@arexbio.com) or your local distributor.

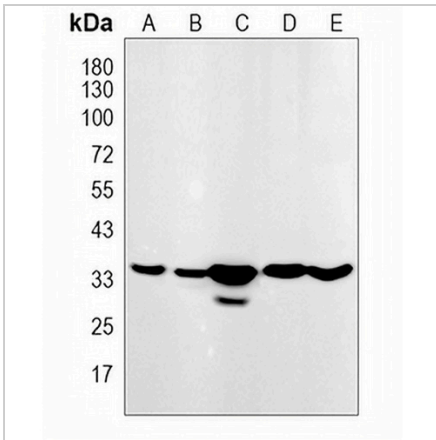
\*Clone Number, Reactivity, Source/Host and Clonality can be found in the product name and Key Features section above.

**DATASHEET**

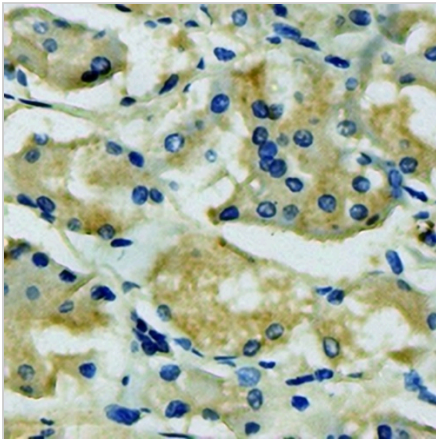
**PEX7 Rabbit Monoclonal Antibody(C775)**

CAT. NO. AMA00387

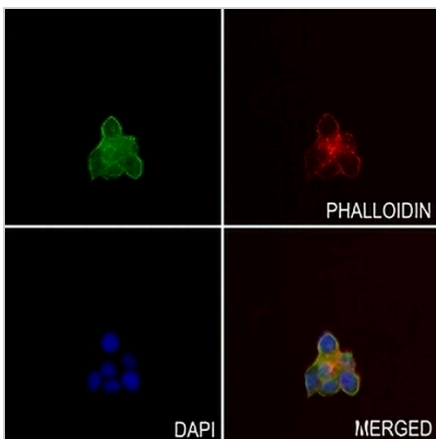
**DATA**



Western blot analysis of PEX7 expression in SGC7901 (A), HT29 (B), mouse muscle (C), rat muscle (D), rat heart (E) whole cell lysates. (Predicted band size: 36 kD; Observed band size: 36 kD)



Immunohistochemical analysis of PEX7 staining in human stomach cancer formalin fixed paraffin embedded tissue section. The section was pre-treated using heat mediated antigen retrieval with sodium citrate buffer (pH 6.0). The section was then incubated with the antibody at room temperature and detected using an HRP conjugated compact polymer system. DAB was used as the chromogen. The section was then counterstained with haematoxylin and mounted with DPX.



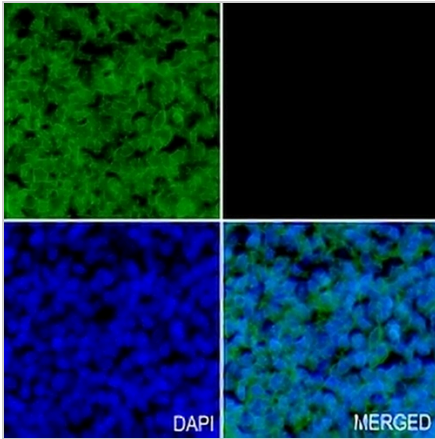
Immunofluorescent analysis of PEX7 staining in 22RV1 cells. Formalin-fixed cells were permeabilized with 0.1% Triton X-100 in TBS for 5-10 minutes and blocked with 3% BSA-PBS for 30 minutes at room temperature. Cells were probed with the primary antibody in 3% BSA-PBS and incubated overnight at 4 °C in a humidified chamber. Cells were washed with PBST and incubated with an AREX® Fluor 488 -conjugated secondary antibody (green) in PBS at room temperature in the dark. Phalloidin - AREX® Fluor 594 was used to stain Actin filaments (red). DAPI was used to stain the cell nuclei (blue).

**DATASHEET**

**PEX7 Rabbit Monoclonal Antibody(C775)**

CAT. NO. AMA00387

**DATA (CONTINUED)**



Immunohistochemical analysis of PEX7 staining in human tonsil formalin fixed paraffin embedded tissue section. The section was pre-treated using heat mediated antigen retrieval with sodium citrate buffer (pH 6.0). The section was then incubated with the antibody at room temperature and detected using an HRP conjugated compact polymer system. Tyramide-AREX® Fluor 488 (green) was used as the chromogen. The section was then counterstained with DAPI (blue).

**STORAGE**

Store at 4°C short term. For long term storage, store at -20°C, avoiding freeze/thaw cycles.

**NOTE**

For Research Use Only. Not for diagnostic, therapeutics, prophylactic or in vivo use.