

**DATASHEET**

**RIPK1 (Cleaved-D324) Rabbit Monoclonal Antibody(C777)**

CAT. NO. AMA00389

**KEY FEATURES**

Target	RIPK1 (Cleaved-D324)	Source / Host	Rabbit
Reactivity	Human, Mouse, Rat	Clonality	Monoclonal
Applications	WB	Conjugation	Unconjugated
Form / Buffer	Liquid in PBS, pH 7.4, containing 50% glycerol, 0.05% BSA and 0.01% sodium azide.	Storage	at-20°C

**BACKGROUND**

Serine-threonine kinase which is a key regulator of TNF-mediated apoptosis, necroptosis and inflammatory pathways . Exhibits kinase activity-dependent functions that regulate cell death and kinase-independent scaffold functions regulating inflammatory signaling and cell survival . Has kinase-independent scaffold functions: upon binding of TNF to TNFR1, RIPK1 is recruited to the TNF-R1 signaling complex (TNF-RSC also known as complex I) where it acts as a scaffold protein promoting cell survival, in part, by activating the canonical NF-kappa-B pathway .

**APPLICATION**

To ensure optimal assay performance, AREX recommends conducting reagent titration tailored to each testing system for optimal detection results.

WB	1:500 - 1:2000
----	----------------

\*Results are sample-specific. Please refer to your local assay conditions and test parameters for reference.

**PRODUCT OVERVIEW**

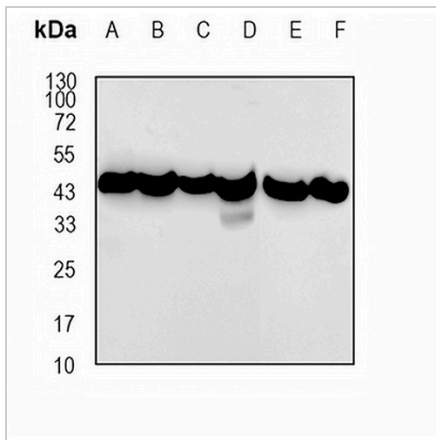
Description	Recombinant rabbit monoclonal antibody to RIPK1 (Cleaved-D324)
Specificity	Recognizes endogenous levels of RIPK1 (Cleaved-D324) protein
Antibody Type	Primary antibody, Recombinant
Immunogen	KLH-conjugated synthetic peptide encompassing a sequence human Cleaved-RIPK1. The exact sequence is proprietary.
Purification	The antibody was purified by immunogen affinity chromatography.
Molecular Weight	Predicted: 75 kD; Observed: 44 kD
Form/Buffer	Liquid in PBS, pH 7.4, containing 50% glycerol, 0.05% BSA and 0.01% sodium azide.
Alternative Names	RIP; RIP1; Receptor-interacting serine/threonine-protein kinase 1; Cell death protein RIP; Receptor-interacting protein 1; RIP-1; Serine/threonine-protein kinase RIP
Gene Symbol	RIPK1
Entrez Gene	8737(Human); 19766(Mouse)
SwissProt	Q13546(Human); Q60855(Mouse)

\*AREX continuously optimizes our products. Webpage content may not reflect the latest updates. For inquiries, please contact [info@arexbio.com](mailto:info@arexbio.com) or your local distributor.

\*Clone Number, Reactivity, Source/Host and Clonality can be found in the product name and Key Features section above.

**DATASHEET****RIPK1 (Cleaved-D324) Rabbit Monoclonal Antibody(C777)**

CAT. NO. AMA00389

**DATA**

Western blot analysis of RIPK1 (Cleaved-D324) expression in A431 (A), U251 (B), U87 (C), mouse lung (D), rat lung (E), rat liver (F) whole cell lysates. (Predicted band size: 75 kD; Observed band size: 44 kD)

**STORAGE**

Store at 4°C short term. For long term storage, store at -20°C, avoiding freeze/thaw cycles.

**NOTE**

For Research Use Only. Not for diagnostic, therapeutics, prophylactic or in vivo use.