

DATASHEET

SMCHD1 Rabbit Monoclonal Antibody(C789)

CAT. NO. AMA00401

KEY FEATURES

Target	SMCHD1	Source / Host	Rabbit
Reactivity	Human	Clonality	Monoclonal
Applications	WB, IHC	Conjugation	Unconjugated
Form / Buffer	Liquid in PBS, pH 7.4, containing 50% glycerol, 0.2% BSA and 0.01% sodium azide.	Storage	at-20°C

BACKGROUND

Non-canonical member of the structural maintenance of chromosomes (SMC) protein family that plays a key role in epigenetic silencing by regulating chromatin architecture . Promotes heterochromatin formation in both autosomes and chromosome X, probably by mediating the merge of chromatin compartments . Plays a key role in chromosome X inactivation in females by promoting the spreading of heterochromatin protein family that plays a key role in epigenetic silencing by regulating chromatin architecture . Promotes heterochromatin formation in both autosomes and chromosome X, probably by mediating the merge of chromatin compartments . Plays a key role in chromosome X inactivation in females by promoting the spreading of heterochromatin .

APPLICATION

To ensure optimal assay performance, AREX recommends conducting reagent titration tailored to each testing system for optimal detection results.

WB	1:500 - 1:1000
IHC	1:50 - 1:200

*Results are sample-specific. Please refer to your local assay conditions and test parameters for reference.

PRODUCT OVERVIEW

Description	Recombinant rabbit monoclonal antibody to SMCHD1
Specificity	Recognizes endogenous levels of SMCHD1 protein
Antibody Type	Primary antibody, Recombinant
Immunogen	KLH-conjugated synthetic peptide encompassing a sequence within human SMCHD1. The exact sequence is proprietary.
Purification	The antibody was purified by immunogen affinity chromatography.
Molecular Weight	Predicted: 226 kD; Observed: 226 kD
Form/Buffer	Liquid in PBS, pH 7.4, containing 50% glycerol, 0.2% BSA and 0.01% sodium azide.
Alternative Names	KIAA0650; Structural maintenance of chromosomes flexible hinge domain-containing protein 1; SMC hinge domain-containing protein 1
Gene Symbol	SMCHD1
Entrez Gene	23347(Human)
SwissProt	A6NHR9(Human)

*AREX continuously optimizes our products. Webpage content may not reflect the latest updates. For inquiries, please contact info@arexbio.com or your local distributor.

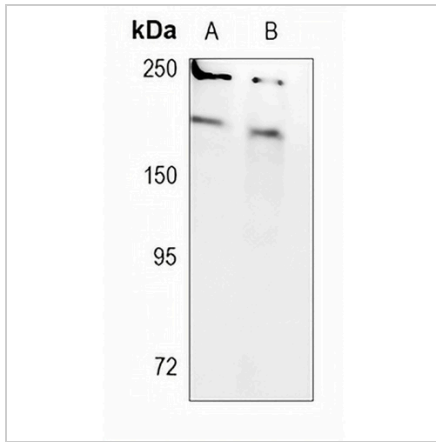
*Clone Number, Reactivity, Source/Host and Clonality can be found in the product name and Key Features section above.

DATASHEET

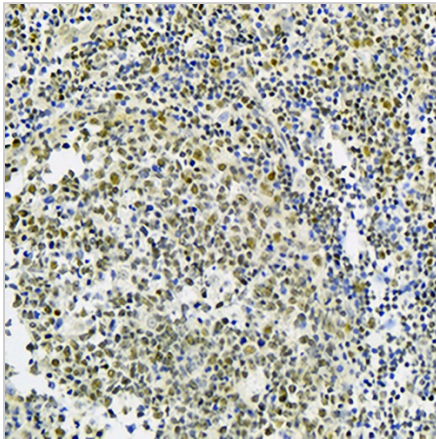
SMCHD1 Rabbit Monoclonal Antibody(C789)

CAT. NO. AMA00401

DATA



Western blot analysis of SMCHD1 expression in HEK293T (A), THP1 (B) whole cell lysates. (Predicted band size: 226 kD; Observed band size: 226 kD)



Immunohistochemical analysis of SMCHD1 staining in human tonsil formalin fixed paraffin embedded tissue section. The section was pre-treated using heat mediated antigen retrieval with sodium citrate buffer (pH 6.0). The section was then incubated with the antibody at room temperature and detected using an HRP conjugated compact polymer system. DAB was used as the chromogen. The section was then counterstained with haematoxylin and mounted with DPX.

STORAGE

Store at 4°C short term. For long term storage, store at -20°C, avoiding freeze/thaw cycles.

NOTE

For Research Use Only. Not for diagnostic, therapeutics, prophylactic or in vivo use.