

## DATASHEET

# PP6 Rabbit Monoclonal Antibody(C790)

CAT. NO. AMA00402

### KEY FEATURES

Target	PP6	Source / Host	Rabbit
Reactivity	Human	Clonality	Monoclonal
Applications	WB	Conjugation	Unconjugated
Form / Buffer	Liquid in PBS, pH 7.4, containing 50% glycerol, 0.2% BSA and 0.01% sodium azide.	Storage	at-20°C

### BACKGROUND

Catalytic subunit of protein phosphatase 6 (PP6) . PP6 is a component of a signaling pathway regulating cell cycle progression in response to IL2 receptor stimulation . N-terminal domain restricts G1 to S phase progression in cancer cells, in part through control of cyclin D1 . During mitosis, regulates spindle positioning . Down-regulates MAP3K7 kinase activation of the IL1 signaling pathway by dephosphorylation of MAP3K7 . Also participates in the innate immune defense against viruses by desphosphorylating RIGI, an essential step that triggers RIGI-mediated signaling activation . Also regulates innate immunity by acting as a negative regulator of the cGAS-STING pathway: mediates dephosphorylation and inactivation of CGAS and STING1 .

### APPLICATION

To ensure optimal assay performance, AREX recommends conducting reagent titration tailored to each testing system for optimal detection results.

WB	1:500 - 1:1000
----	----------------

\*Results are sample-specific. Please refer to your local assay conditions and test parameters for reference.

### PRODUCT OVERVIEW

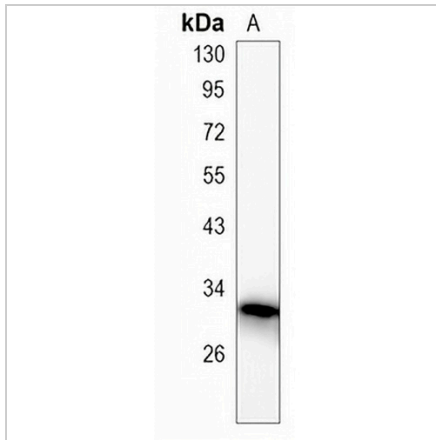
Description	Recombinant rabbit monoclonal antibody to PP6
Specificity	Recognizes endogenous levels of PP6 protein
Antibody Type	Primary antibody, Recombinant
Immunogen	KLH-conjugated synthetic peptide encompassing a sequence within human PP6. The exact sequence is proprietary.
Purification	The antibody was purified by immunogen affinity chromatography.
Molecular Weight	Predicted: 35 kD; Observed: 32 kD
Form/Buffer	Liquid in PBS, pH 7.4, containing 50% glycerol, 0.2% BSA and 0.01% sodium azide.
Alternative Names	PPP6; Serine/threonine-protein phosphatase 6 catalytic subunit; PP6C
Gene Symbol	PPP6C
Entrez Gene	5537(Human)
SwissProt	O00743(Human)

\*AREX continuously optimizes our products. Webpage content may not reflect the latest updates. For inquiries, please contact [info@arexbio.com](mailto:info@arexbio.com) or your local distributor.

\*Clone Number, Reactivity, Source/Host and Clonality can be found in the product name and Key Features section above.

**DATASHEET****PP6 Rabbit Monoclonal Antibody(C790)**

CAT. NO. AMA00402

**DATA**

Western blot analysis of PP6 expression in HeLa (A) whole cell lysates. (Predicted band size: 35 kD; Observed band size: 32 kD)

**STORAGE**

Store at 4°C short term. For long term storage, store at -20°C, avoiding freeze/thaw cycles.

**NOTE**

For Research Use Only. Not for diagnostic, therapeutics, prophylactic or in vivo use.