

DATASHEET

LDHA Rabbit Monoclonal Antibody(C797)

CAT. NO. AMA00409

KEY FEATURES

Target	LDHA	Source / Host	Rabbit
Reactivity	Human, Mouse, Rat	Clonality	Monoclonal
Applications	WB, IHC, IF/ICC	Conjugation	Unconjugated
Form / Buffer	Liquid in PBS, pH 7.4, containing 50% glycerol, 0.2% BSA and 0.01% sodium azide.	Storage	at-20°C

BACKGROUND

Interconverts simultaneously and stereospecifically pyruvate and lactate with concomitant interconversion of NADH and NAD(+).

APPLICATION

To ensure optimal assay performance, AREX recommends conducting reagent titration tailored to each testing system for optimal detection results.

WB	1:500 - 1:1000
IHC	1:50 - 1:200
IF/ICC	1:50 - 1:200

*Results are sample-specific. Please refer to your local assay conditions and test parameters for reference.

PRODUCT OVERVIEW

Description	Recombinant rabbit monoclonal antibody to LDHA
Specificity	Recognizes endogenous levels of LDHA protein
Antibody Type	Primary antibody, Recombinant
Immunogen	KLH-conjugated synthetic peptide encompassing a sequence within human LDHA. The exact sequence is proprietary.
Purification	The antibody was purified by immunogen affinity chromatography.
Molecular Weight	Predicted: 36 kD; Observed: 37 kD
Form/Buffer	Liquid in PBS, pH 7.4, containing 50% glycerol, 0.2% BSA and 0.01% sodium azide.
Alternative Names	L-lactate dehydrogenase A chain; LDH-A; Cell proliferation-inducing gene 19 protein; LDH muscle subunit; LDH-M; Renal carcinoma antigen NY-REN-59
Gene Symbol	LDHA
Entrez Gene	3939(Human); 16828(Mouse); 24533(Rat)
SwissProt	P00338(Human); P06151(Mouse); P04642(Rat)

*AREX continuously optimizes our products. Webpage content may not reflect the latest updates. For inquiries, please contact info@arexbio.com or your local distributor.

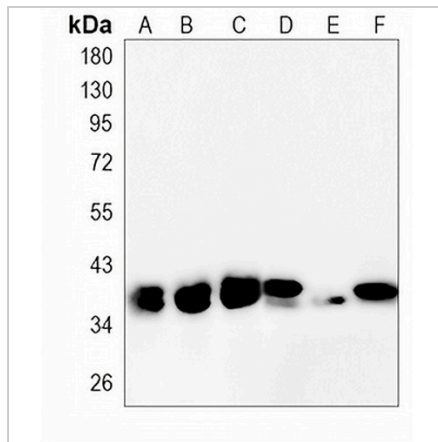
*Clone Number, Reactivity, Source/Host and Clonality can be found in the product name and Key Features section above.

DATASHEET

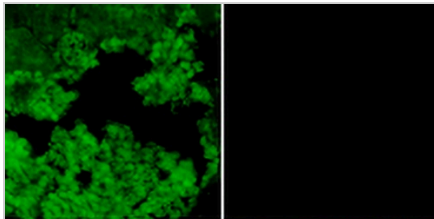
LDHA Rabbit Monoclonal Antibody(C797)

CAT. NO. AMA00409

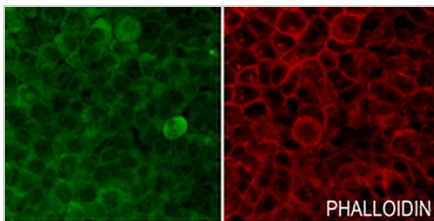
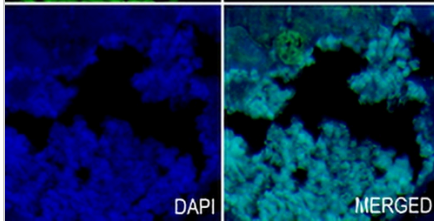
DATA



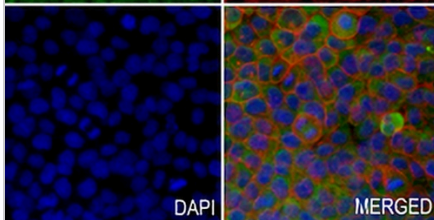
Western blot analysis of LDHA expression in HEK293T (A), HeLa (B), Jurkat (C), mouse kidney (D), rat liver (E), rat kidney (F) whole cell lysates. (Predicted band size: 36 kD; Observed band size: 37 kD)



Immunohistochemical analysis of LDHA staining in rat kidney formalin fixed paraffin embedded tissue section. The section was pre-treated using heat mediated antigen retrieval with sodium citrate buffer (pH 6.0). The section was then incubated with the antibody at room temperature and detected using an HRP conjugated compact polymer system. Tyramide-AREX® Fluor 488 (green) was used as the chromogen. The section was then counterstained with DAPI (blue).



Immunofluorescent analysis of LDHA staining in MCF7 cells. Formalin-fixed cells were permeabilized with 0.1% Triton X-100 in TBS for 5-10 minutes and blocked with 3% BSA-PBS for 30 minutes at room temperature. Cells were probed with the primary antibody in 3% BSA-PBS and incubated overnight at 4 °C in a humidified chamber. Cells were washed with PBST and incubated with an AREX® Fluor 488 -conjugated secondary antibody (green) in PBS at room temperature in the dark. Phalloidin - AREX® Fluor 594 was used to stain Actin filaments (red). DAPI was used to stain the cell nuclei (blue).



STORAGE

Store at 4°C short term. For long term storage, store at -20°C, avoiding freeze/thaw cycles.

NOTE

For Research Use Only. Not for diagnostic, therapeutics, prophylactic or in vivo use.