

**DATASHEET**

**CHRM2 Rabbit Monoclonal Antibody(C801)**

CAT. NO. AMA00413

**KEY FEATURES**

Target	CHRM2	Source / Host	Rabbit
Reactivity	Human, Mouse	Clonality	Monoclonal
Applications	WB	Conjugation	Unconjugated
Form / Buffer	Liquid in PBS, pH 7.4, containing 50% glycerol, 0.2% BSA and 0.01% sodium azide.	Storage	at-20°C

**BACKGROUND**

Muscarinic receptor for acetylcholine, a neurotransmitter found in the brain, neuromuscular junctions and the autonomic ganglia . Ligand binding causes a conformation change that triggers signaling via guanine nucleotide-binding proteins (G proteins) and modulates the activity of downstream effectors, such as adenylate cyclase . CHRM2 is coupled to G(i)/G(o) (GNAI1 or GNAO1) G proteins and mediates signaling by inhibiting adenylate cyclase activity .

**APPLICATION**

To ensure optimal assay performance, AREX recommends conducting reagent titration tailored to each testing system for optimal detection results.

WB	1:500 - 1:1000
----	----------------

\*Results are sample-specific. Please refer to your local assay conditions and test parameters for reference.

**PRODUCT OVERVIEW**

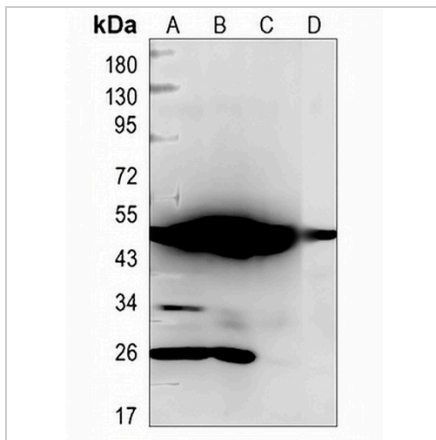
Description	Recombinant rabbit monoclonal antibody to CHRM2
Specificity	Recognizes endogenous levels of CHRM2 protein
Antibody Type	Primary antibody, Recombinant
Immunogen	KLH-conjugated synthetic peptide encompassing a sequence within human CHRM2. The exact sequence is proprietary.
Purification	The antibody was purified by immunogen affinity chromatography.
Molecular Weight	Predicted: 51 kD; Observed: 52 kD
Form/Buffer	Liquid in PBS, pH 7.4, containing 50% glycerol, 0.2% BSA and 0.01% sodium azide.
Alternative Names	Muscarinic acetylcholine receptor M2
Gene Symbol	CHRM2
Entrez Gene	1129(Human); 243764(Mouse)
SwissProt	P08172(Human); Q9ERZ4(Mouse)

\*AREX continuously optimizes our products. Webpage content may not reflect the latest updates. For inquiries, please contact [info@arexbio.com](mailto:info@arexbio.com) or your local distributor.

\*Clone Number, Reactivity, Source/Host and Clonality can be found in the product name and Key Features section above.

**DATASHEET****CHRM2 Rabbit Monoclonal Antibody(C801)**

CAT. NO. AMA00413

**DATA**

Western blot analysis of CHRM2 expression in HEK293T (A), H1792 (B), LOVO (C), mouse kidney (D) whole cell lysates. (Predicted band size: 51 kD; Observed band size: 52 kD)

**STORAGE**

Store at 4°C short term. For long term storage, store at -20°C, avoiding freeze/thaw cycles.

**NOTE**

For Research Use Only. Not for diagnostic, therapeutics, prophylactic or in vivo use.