

DATASHEET

Myosin Heavy Chain 6/7 Rabbit Monoclonal Antibody(C808)

CAT. NO. AMA00420

KEY FEATURES

Target	Myosin Heavy Chain 6/7	Source / Host	Rabbit
Reactivity	Human, Mouse, Rat	Clonality	Monoclonal
Applications	WB, IHC	Conjugation	Unconjugated
Form / Buffer	Liquid in PBS, pH 7.4, containing 50% glycerol, 0.2% BSA and 0.01% sodium azide.	Storage	at-20°C

BACKGROUND

Myosins are actin-based motor molecules with ATPase activity essential for muscle contraction. Forms regular bipolar thick filaments that, together with actin thin filaments, constitute the fundamental contractile unit of skeletal and cardiac muscle.

APPLICATION

To ensure optimal assay performance, AREX recommends conducting reagent titration tailored to each testing system for optimal detection results.

WB	1:500 - 1:1000
IHC	1:50 - 1:200

*Results are sample-specific. Please refer to your local assay conditions and test parameters for reference.

PRODUCT OVERVIEW

Description	Recombinant rabbit monoclonal antibody to Myosin Heavy Chain 6/7
Specificity	Recognizes endogenous levels of Myosin Heavy Chain 6/7 protein
Antibody Type	Primary antibody, Recombinant
Immunogen	KLH-conjugated synthetic peptide encompassing a sequence within human Myosin Heavy Chain 6/7. The exact sequence is proprietary.
Purification	The antibody was purified by immunogen affinity chromatography.
Molecular Weight	Predicted: 224 kD; Observed: 224 kD
Form/Buffer	Liquid in PBS, pH 7.4, containing 50% glycerol, 0.2% BSA and 0.01% sodium azide.
Alternative Names	MYHCA; Myosin-6; Myosin heavy chain 6; Myosin heavy chain cardiac muscle alpha isoform; MyHC-alpha; MYHCB; Myosin-7; Myosin heavy chain 7; Myosin heavy chain slow isoform; MyHC-slow; Myosin heavy chain cardiac muscle beta isoform; MyHC-beta
Gene Symbol	MYH6; MYH7
Entrez Gene	4624; 4625(Human); 17888; 140781(Mouse); 29557(Rat)
SwissProt	P12883; P13533(Human); Q02566; Q91Z83(Mouse); P02563; P02564(Rat)

*AREX continuously optimizes our products. Webpage content may not reflect the latest updates. For inquiries, please contact info@arexbio.com or your local distributor.

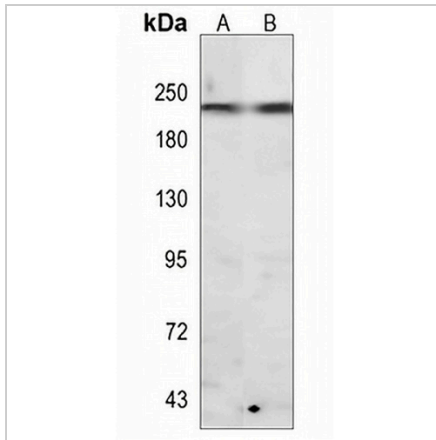
*Clone Number, Reactivity, Source/Host and Clonality can be found in the product name and Key Features section above.

DATASHEET

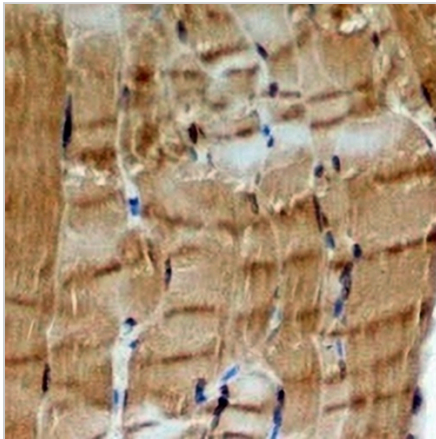
Myosin Heavy Chain 6/7 Rabbit Monoclonal Antibody(C808)

CAT. NO. AMA00420

DATA



Western blot analysis of Myosin Heavy Chain 6/7 expression in mouse muscle (A), rat muscle (B) whole cell lysates. (Predicted band size: 224 kD; Observed band size: 224 kD)



Immunohistochemical analysis of Myosin Heavy Chain 6/7 staining in human skeletal muscle formalin fixed paraffin embedded tissue section. The section was pre-treated using heat mediated antigen retrieval with sodium citrate buffer (pH 6.0). The section was then incubated with the antibody at room temperature and detected using an HRP conjugated compact polymer system. DAB was used as the chromogen. The section was then counterstained with haematoxylin and mounted with DPX.

STORAGE

Store at 4°C short term. For long term storage, store at -20°C, avoiding freeze/thaw cycles.

NOTE

For Research Use Only. Not for diagnostic, therapeutics, prophylactic or in vivo use.