

**DATASHEET**

**Fibrillarin Rabbit Monoclonal Antibody(C810)**

CAT. NO. AMA00422

**KEY FEATURES**

Target	Fibrillarin	Source / Host	Rabbit
Reactivity	Human	Clonality	Monoclonal
Applications	WB, IHC	Conjugation	Unconjugated
Form / Buffer	Liquid in PBS, pH 7.4, containing 50% glycerol, 0.2% BSA and 0.01% sodium azide.	Storage	at-20°C

**BACKGROUND**

S-adenosyl-L-methionine-dependent methyltransferase that has the ability to methylate both RNAs and proteins . Involved in pre-rRNA processing by catalyzing the site-specific 2'-hydroxyl methylation of ribose moieties in pre-ribosomal RNA . Site specificity is provided by a guide RNA that base pairs with the substrate . Methylation occurs at a characteristic distance from the sequence involved in base pairing with the guide RNA . Probably catalyzes 2'-O-methylation of U6 snRNAs in box C/D RNP complexes . U6 snRNA 2'-O-methylation is required for mRNA splicing fidelity . Also acts as a protein methyltransferase by mediating methylation of 'Gln-105' of histone H2A (H2AQ104me), a modification that impairs binding of the FACT complex and is specifically present at 35S ribosomal DNA locus .

**APPLICATION**

To ensure optimal assay performance, AREX recommends conducting reagent titration tailored to each testing system for optimal detection results.

WB	1:500 - 1:1000
IHC	1:50 - 1:200

\*Results are sample-specific. Please refer to your local assay conditions and test parameters for reference.

**PRODUCT OVERVIEW**

Description	Recombinant rabbit monoclonal antibody to Fibrillarin
Specificity	Recognizes endogenous levels of Fibrillarin protein
Antibody Type	Primary antibody, Recombinant
Immunogen	KLH-conjugated synthetic peptide encompassing a sequence within human Fibrillarin. The exact sequence is proprietary.
Purification	The antibody was purified by immunogen affinity chromatography.
Molecular Weight	Predicted: 33 kD; Observed: 33 kD
Form/Buffer	Liquid in PBS, pH 7.4, containing 50% glycerol, 0.2% BSA and 0.01% sodium azide.
Alternative Names	FIB1; FLRN; rRNA 2'-O-methyltransferase fibrillarin; 34 kDa nucleolar scleroderma antigen; Histone-glutamine methyltransferase
Gene Symbol	FBL
Entrez Gene	2091(Human)
SwissProt	P22087(Human)

\*AREX continuously optimizes our products. Webpage content may not reflect the latest updates. For inquiries, please contact [info@arexbio.com](mailto:info@arexbio.com) or your local distributor.

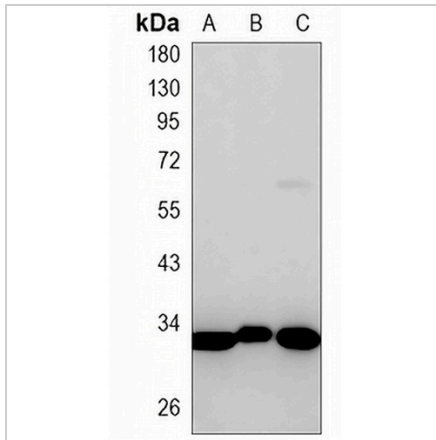
\*Clone Number, Reactivity, Source/Host and Clonality can be found in the product name and Key Features section above.

**DATASHEET**

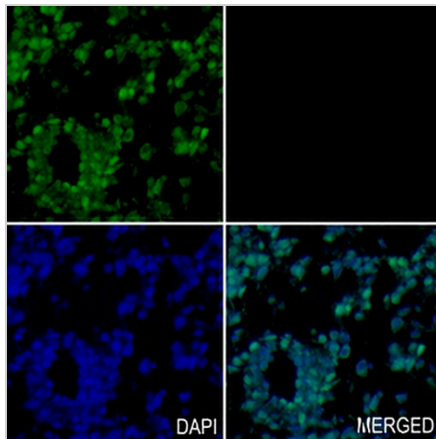
**Fibrillarin Rabbit Monoclonal Antibody(C810)**

CAT. NO. AMA00422

**DATA**



Western blot analysis of Fibrillarin expression in HEK293T (A), HeLa (B), Jurkat (C) whole cell lysates. (Predicted band size: 33 kD; Observed band size: 33 kD)



Immunohistochemical analysis of Fibrillarin staining in human ovary formalin fixed paraffin embedded tissue section. The section was pre-treated using heat mediated antigen retrieval with sodium citrate buffer (pH 6.0). The section was then incubated with the antibody at room temperature and detected using an HRP conjugated compact polymer system. Tyramide-AREX® Fluor 488 (green) was used as the chromogen. The section was then counterstained with DAPI (blue).

**STORAGE**

Store at 4°C short term. For long term storage, store at -20°C, avoiding freeze/thaw cycles.

**NOTE**

For Research Use Only. Not for diagnostic, therapeutics, prophylactic or in vivo use.