

**DATASHEET**

**SAA4 Rabbit Monoclonal Antibody(C818)**

CAT. NO. AMA00430

**KEY FEATURES**

Target	SAA4	Source / Host	Rabbit
Reactivity	Human, Mouse, Rat	Clonality	Monoclonal
Applications	WB	Conjugation	Unconjugated
Form / Buffer	Liquid in PBS, pH 7.4, containing 50% glycerol, 0.2% BSA and 0.01% sodium azide.	Storage	at-20°C

**BACKGROUND**

Major acute phase reactant.

**APPLICATION**

To ensure optimal assay performance, AREX recommends conducting reagent titration tailored to each testing system for optimal detection results.

WB	1:500 - 1:1000
----	----------------

\*Results are sample-specific. Please refer to your local assay conditions and test parameters for reference.

**PRODUCT OVERVIEW**

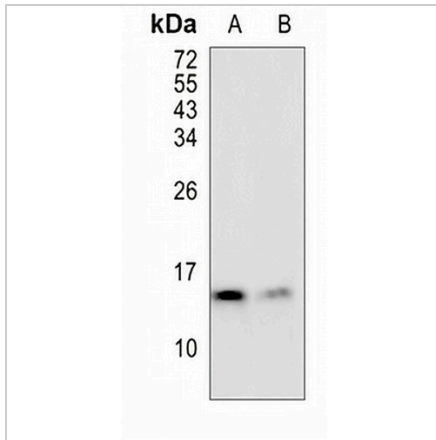
Description	Recombinant rabbit monoclonal antibody to SAA4
Specificity	Recognizes endogenous levels of SAA4 protein
Antibody Type	Primary antibody, Recombinant
Immunogen	KLH-conjugated synthetic peptide encompassing a sequence within human SAA4. The exact sequence is proprietary.
Purification	The antibody was purified by immunogen affinity chromatography.
Molecular Weight	Predicted: 14 kD; Observed: 15 kD
Form/Buffer	Liquid in PBS, pH 7.4, containing 50% glycerol, 0.2% BSA and 0.01% sodium azide.
Alternative Names	CSAA; Serum amyloid A-4 protein; Constitutively expressed serum amyloid A protein; C-SAA
Gene Symbol	SAA4
Entrez Gene	6291(Human); 20211(Mouse)
SwissProt	P35542(Human); P31532(Mouse)

\*AREX continuously optimizes our products. Webpage content may not reflect the latest updates. For inquiries, please contact [info@arexbio.com](mailto:info@arexbio.com) or your local distributor.

\*Clone Number, Reactivity, Source/Host and Clonality can be found in the product name and Key Features section above.

**DATASHEET****SAA4 Rabbit Monoclonal Antibody(C818)**

CAT. NO. AMA00430

**DATA**

Western blot analysis of SAA4 expression in mouse heart (A), rat heart (B) whole cell lysates. (Predicted band size: 14 kD; Observed band size: 15 kD)

**STORAGE**

Store at 4°C short term. For long term storage, store at -20°C, avoiding freeze/thaw cycles.

**NOTE**

For Research Use Only. Not for diagnostic, therapeutics, prophylactic or in vivo use.