

DATASHEET

NAP1L1 Rabbit Monoclonal Antibody(C825)

CAT. NO. AMA00437

KEY FEATURES

Target	NAP1L1	Source / Host	Rabbit
Reactivity	Human, Mouse, Rat	Clonality	Monoclonal
Applications	WB	Conjugation	Unconjugated
Form / Buffer	Liquid in PBS, pH 7.4, containing 50% glycerol, 0.2% BSA and 0.01% sodium azide.	Storage	at-20°C

BACKGROUND

Histone chaperone that plays a role in the nuclear import of H2A-H2B and nucleosome assembly . Also participates in several important DNA repair mechanisms: greatly enhances ERCC6-mediated chromatin remodeling which is essential for transcription-coupled nucleotide excision DNA repair . Also stimulates homologous recombination (HR) by RAD51 and RAD54 which is essential in mitotic DNA double strand break (DSB) repair . Plays a key role in the regulation of embryonic neurogenesis . Promotes the proliferation of neural progenitors and inhibits neuronal differentiation during cortical development . Regulates neurogenesis via the modulation of RASSF10; regulates RASSF10 expression by promoting SETD1A-mediated H3K4 methylation at the RASSF10 promoter .

APPLICATION

To ensure optimal assay performance, AREX recommends conducting reagent titration tailored to each testing system for optimal detection results.

WB	1:500 - 1:1000
----	----------------

*Results are sample-specific. Please refer to your local assay conditions and test parameters for reference.

PRODUCT OVERVIEW

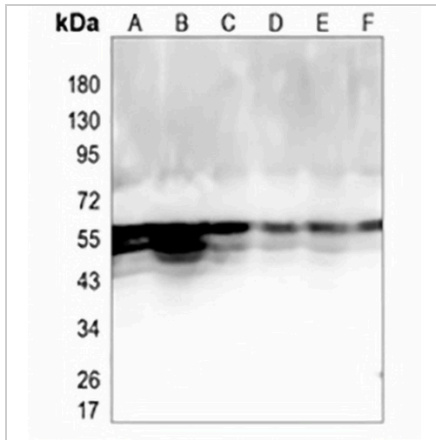
Description	Recombinant rabbit monoclonal antibody to NAP1L1
Specificity	Recognizes endogenous levels of NAP1L1 protein
Antibody Type	Primary antibody, Recombinant
Immunogen	KLH-conjugated synthetic peptide encompassing a sequence within human NAP1L1. The exact sequence is proprietary.
Purification	The antibody was purified by immunogen affinity chromatography.
Molecular Weight	Predicted: 45 kD; Observed: 52; 60 kD
Form/Buffer	Liquid in PBS, pH 7.4, containing 50% glycerol, 0.2% BSA and 0.01% sodium azide.
Alternative Names	NRP; Nucleosome assembly protein 1-like 1; NAP-1-related protein; hNRP
Gene Symbol	NAP1L1
Entrez Gene	4673(Human); 53605(Mouse); 89825(Rat)
SwissProt	P55209(Human); P28656(Mouse); Q9Z2G8(Rat)

*AREX continuously optimizes our products. Webpage content may not reflect the latest updates. For inquiries, please contact info@arexbio.com or your local distributor.

*Clone Number, Reactivity, Source/Host and Clonality can be found in the product name and Key Features section above.

DATASHEET**NAP1L1 Rabbit Monoclonal Antibody(C825)**

CAT. NO. AMA00437

DATA

Western blot analysis of NAP1L1 expression in HEK293T (A), Jurkat (B), mouse brain (C), mouse kidney (D), rat brain (E), rat kidney (F) whole cell lysates. (Predicted band size: 45 kD; Observed band size: 52; 60 kD)

STORAGE

Store at 4°C short term. For long term storage, store at -20°C, avoiding freeze/thaw cycles.

NOTE

For Research Use Only. Not for diagnostic, therapeutics, prophylactic or in vivo use.