

## DATASHEET

# PREB Rabbit Monoclonal Antibody(C859)

CAT. NO. AMA00471

### KEY FEATURES

Target	PREB	Source / Host	Rabbit
Reactivity	Human	Clonality	Monoclonal
Applications	WB, IHC	Conjugation	Unconjugated
Form / Buffer	Liquid in PBS, pH 7.4, containing 50% glycerol, 0.2% BSA and 0.01% sodium azide.	Storage	at-20°C

### BACKGROUND

Guanine nucleotide exchange factor (GEF) that regulates the assembly of the coat protein complex II/COPII in endoplasmic reticulum (ER) to Golgi vesicle-mediated transport. Selectively activates SAR1A and SAR1B by promoting the exchange of guanosine diphosphate (GDP) for guanosine triphosphate (GTP) in these small GTPases that regulates the assembly of the coat protein complex II/COPII in endoplasmic reticulum (ER) to Golgi vesicle-mediated transport. Selectively activates SAR1A and SAR1B by promoting the exchange of guanosine diphosphate (GDP) for guanosine triphosphate (GTP) in these small GTPases .

### APPLICATION

To ensure optimal assay performance, AREX recommends conducting reagent titration tailored to each testing system for optimal detection results.

WB	1:500 - 1:1000
IHC	1:50 - 1:200

\*Results are sample-specific. Please refer to your local assay conditions and test parameters for reference.

### PRODUCT OVERVIEW

Description	Recombinant rabbit monoclonal antibody to PREB
Specificity	Recognizes endogenous levels of PREB protein
Antibody Type	Primary antibody, Recombinant
Immunogen	KLH-conjugated synthetic peptide encompassing a sequence within human PREB. The exact sequence is proprietary.
Purification	The antibody was purified by immunogen affinity chromatography.
Molecular Weight	Predicted: 45 kD; Observed: 45 kD
Form/Buffer	Liquid in PBS, pH 7.4, containing 50% glycerol, 0.2% BSA and 0.01% sodium azide.
Alternative Names	SEC12; Prolactin regulatory element-binding protein; Mammalian guanine nucleotide exchange factor mSec12
Gene Symbol	PREB
Entrez Gene	10113(Human)
SwissProt	Q9HCU5(Human)

\*AREX continuously optimizes our products. Webpage content may not reflect the latest updates. For inquiries, please contact [info@arexbio.com](mailto:info@arexbio.com) or your local distributor.

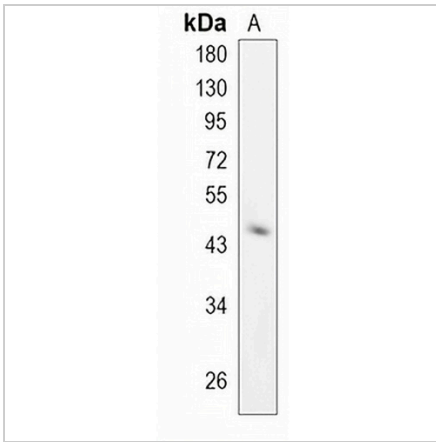
\*Clone Number, Reactivity, Source/Host and Clonality can be found in the product name and Key Features section above.

**DATASHEET**

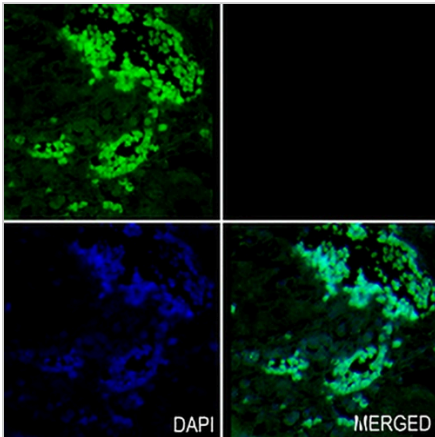
**PREB Rabbit Monoclonal Antibody(C859)**

CAT. NO. AMA00471

**DATA**



Western blot analysis of PREB expression in MCF7 (A) whole cell lysates. (Predicted band size: 45 kD; Observed band size: 45 kD)



Immunohistochemical analysis of PREB staining in human colon formalin fixed paraffin embedded tissue section. The section was pre-treated using heat mediated antigen retrieval with sodium citrate buffer (pH 6.0). The section was then incubated with the antibody at room temperature and detected using an HRP conjugated compact polymer system. Tyramide-AREX® Fluor 488 (green) was used as the chromogen. The section was then counterstained with DAPI (blue).

**STORAGE**

Store at 4°C short term. For long term storage, store at -20°C, avoiding freeze/thaw cycles.

**NOTE**

For Research Use Only. Not for diagnostic, therapeutics, prophylactic or in vivo use.