

DATASHEET

TRPV5 Rabbit Monoclonal Antibody(C861)

CAT. NO. AMA00473

KEY FEATURES

Target	TRPV5	Source / Host	Rabbit
Reactivity	Human, Mouse	Clonality	Monoclonal
Applications	WB, IF/ICC	Conjugation	Unconjugated
Form / Buffer	Liquid in PBS, pH 7.4, containing 50% glycerol, 0.2% BSA and 0.01% sodium azide.	Storage	at-20°C

BACKGROUND

Constitutively active calcium selective cation channel thought to be involved in Ca(2+) reabsorption in kidney and intestine reabsorption in kidney and intestine . Required for normal Ca(2+) reabsorption in the kidney distal convoluted tubules . The channel is activated by low internal calcium level and the current exhibits an inward rectification . A Ca(2+)-dependent feedback regulation includes fast channel inactivation and slow current decay . Heteromeric assembly with TRPV6 seems to modify channel properties. TRPV5-TRPV6 heteromultimeric concatemers exhibit voltage-dependent gating .

APPLICATION

To ensure optimal assay performance, AREX recommends conducting reagent titration tailored to each testing system for optimal detection results.

WB	1:500 - 1:1000
IF/ICC	1:50 - 1:200

*Results are sample-specific. Please refer to your local assay conditions and test parameters for reference.

PRODUCT OVERVIEW

Description	Recombinant rabbit monoclonal antibody to TRPV5
Specificity	Recognizes endogenous levels of TRPV5 protein
Antibody Type	Primary antibody, Recombinant
Immunogen	KLH-conjugated synthetic peptide encompassing a sequence within human TRPV5. The exact sequence is proprietary.
Purification	The antibody was purified by immunogen affinity chromatography.
Molecular Weight	Predicted: 82 kD; Observed: 85-100 kD
Form/Buffer	Liquid in PBS, pH 7.4, containing 50% glycerol, 0.2% BSA and 0.01% sodium azide.
Alternative Names	ECAC1; Transient receptor potential cation channel subfamily V member 5; TrpV5; Calcium transport protein 2; CaT2; Epithelial calcium channel 1; ECaC; ECaC1; Osm-9-like TRP channel 3; OTRPC3
Gene Symbol	TRPV5
Entrez Gene	56302(Human); 194352(Mouse)
SwissProt	Q9NQA5(Human); P69744(Mouse)

*AREX continuously optimizes our products. Webpage content may not reflect the latest updates. For inquiries, please contact info@arexbio.com or your local distributor.

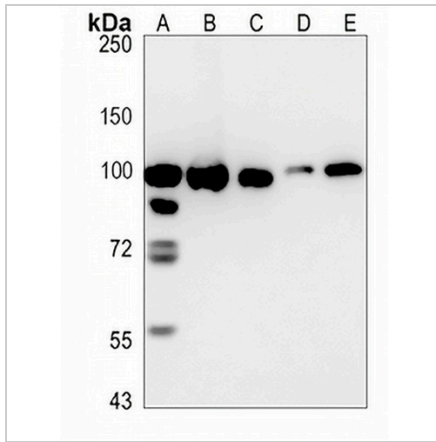
*Clone Number, Reactivity, Source/Host and Clonality can be found in the product name and Key Features section above.

DATASHEET

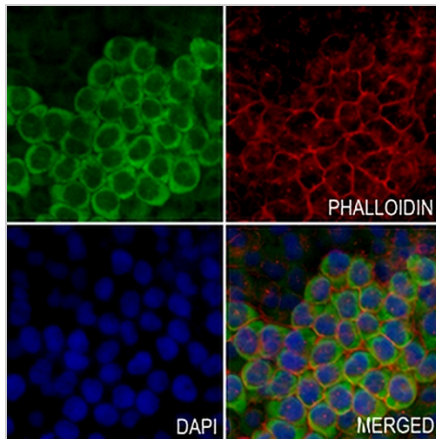
TRPV5 Rabbit Monoclonal Antibody(C861)

CAT. NO. AMA00473

DATA



Western blot analysis of TRPV5 expression in HEK293T (A), EC9706 (B), LOVO (C), mouse lung (D), mouse kidney (E) whole cell lysates. (Predicted band size: 82 kD; Observed band size: 85-100 kD)



Immunofluorescent analysis of TRPV5 staining in MCF7 cells. Formalin-fixed cells were permeabilized with 0.1% Triton X-100 in TBS for 5-10 minutes and blocked with 3% BSA-PBS for 30 minutes at room temperature. Cells were probed with the primary antibody in 3% BSA-PBS and incubated overnight at 4 °C in a humidified chamber. Cells were washed with PBST and incubated with an AREX® Fluor 488 -conjugated secondary antibody (green) in PBS at room temperature in the dark. Phalloidin - AREX® Fluor 594 was used to stain Actin filaments (red). DAPI was used to stain the cell nuclei (blue).

STORAGE

Store at 4°C short term. For long term storage, store at -20°C, avoiding freeze/thaw cycles.

NOTE

For Research Use Only. Not for diagnostic, therapeutics, prophylactic or in vivo use.