

## DATASHEET

# RAB9A Rabbit Monoclonal Antibody(C879)

CAT. NO. AMA00491

### KEY FEATURES

Target	RAB9A	Source / Host	Rabbit
Reactivity	Human, Mouse, Rat	Clonality	Monoclonal
Applications	WB	Conjugation	Unconjugated
Form / Buffer	Liquid in PBS, pH 7.4, containing 50% glycerol, 0.2% BSA and 0.01% sodium azide.	Storage	at-20°C

### BACKGROUND

The small GTPases Rab are key regulators of intracellular membrane trafficking, from the formation of transport vesicles to their fusion with membranes. Rabs cycle between an inactive GDP-bound form and an active GTP-bound form that is able to recruit to membranes different sets of downstream effectors directly responsible for vesicle formation, movement, tethering and fusion . RAB9A is involved in the transport of proteins between the endosomes and the trans-Golgi network (TGN) . Specifically uses NDE1/NDEL1 as an effector to interact with the dynein motor complex in order to control retrograde trafficking of RAB9-associated late endosomes to the TGN .

### APPLICATION

To ensure optimal assay performance, AREX recommends conducting reagent titration tailored to each testing system for optimal detection results.

WB	1:500 - 1:1000
----	----------------

\*Results are sample-specific. Please refer to your local assay conditions and test parameters for reference.

### PRODUCT OVERVIEW

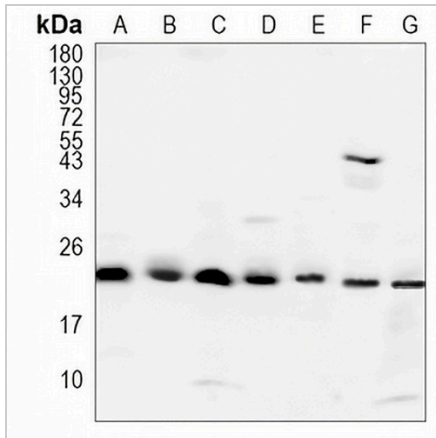
Description	Recombinant rabbit monoclonal antibody to RAB9A
Specificity	Recognizes endogenous levels of RAB9A protein
Antibody Type	Primary antibody, Recombinant
Immunogen	KLH-conjugated synthetic peptide encompassing a sequence within human RAB9A. The exact sequence is proprietary.
Purification	The antibody was purified by immunogen affinity chromatography.
Molecular Weight	Predicted: 22 kD; Observed: 23 kD
Form/Buffer	Liquid in PBS, pH 7.4, containing 50% glycerol, 0.2% BSA and 0.01% sodium azide.
Alternative Names	RAB9; Ras-related protein Rab-9A
Gene Symbol	RAB9A
Entrez Gene	9367(Human); 56382(Mouse); 84589(Rat)
SwissProt	P51151(Human); Q9R0M6(Mouse); Q99P75(Rat)

\*AREX continuously optimizes our products. Webpage content may not reflect the latest updates. For inquiries, please contact [info@arexbio.com](mailto:info@arexbio.com) or your local distributor.

\*Clone Number, Reactivity, Source/Host and Clonality can be found in the product name and Key Features section above.

**DATASHEET****RAB9A Rabbit Monoclonal Antibody(C879)**

CAT. NO. AMA00491

**DATA**

Western blot analysis of RAB9A expression in A549 (A), HeLa (B), K562 (C), mouse liver (D), mouse kidney (E), rat liver (F), rat kidney (G) whole cell lysates. (Predicted band size: 22 kD; Observed band size: 23 kD)

**STORAGE**

Store at 4°C short term. For long term storage, store at -20°C, avoiding freeze/thaw cycles.

**NOTE**

For Research Use Only. Not for diagnostic, therapeutics, prophylactic or in vivo use.