

DATASHEET

RAB5A Rabbit Monoclonal Antibody(C889)

CAT. NO. AMA00501

KEY FEATURES

Target	RAB5A	Source / Host	Rabbit
Reactivity	Human	Clonality	Monoclonal
Applications	WB, IF/ICC	Conjugation	Unconjugated
Form / Buffer	Liquid in PBS, pH 7.4, containing 50% glycerol, 0.2% BSA and 0.01% sodium azide.	Storage	at-20°C

BACKGROUND

The small GTPases Rab are key regulators of intracellular membrane trafficking, from the formation of transport vesicles to their fusion with membranes. Rabs cycle between an inactive GDP-bound form and an active GTP-bound form that is able to recruit to membranes different sets of downstream effectors directly responsible for vesicle formation, movement, tethering and fusion. RAB5A is required for the fusion of plasma membranes and early endosomes and involved in early endocytic trafficking . Required for EEA1 recruitment to early endosomes . Recruits FERRY complex to early endosomes, where FERRY links early endosomes with a subgroup of mRNAs to enable mRNA intracellular distribution . Recruits RABEP1/Rabaptin-5 effector to early endosomes, thereby promoting endocytic membrane fusion .

APPLICATION

To ensure optimal assay performance, AREX recommends conducting reagent titration tailored to each testing system for optimal detection results.

WB	1:500 - 1:1000
IF/ICC	1:50 - 1:200

*Results are sample-specific. Please refer to your local assay conditions and test parameters for reference.

PRODUCT OVERVIEW

Description	Recombinant rabbit monoclonal antibody to RAB5A
Specificity	Recognizes endogenous levels of RAB5A protein
Antibody Type	Primary antibody, Recombinant
Immunogen	KLH-conjugated synthetic peptide encompassing a sequence within human RAB5A. The exact sequence is proprietary.
Purification	The antibody was purified by immunogen affinity chromatography.
Molecular Weight	Predicted: 23 kD; Observed: 24 kD
Form/Buffer	Liquid in PBS, pH 7.4, containing 50% glycerol, 0.2% BSA and 0.01% sodium azide.
Alternative Names	RAB5; Ras-related protein Rab-5A
Gene Symbol	RAB5A
Entrez Gene	5868(Human)
SwissProt	P20339(Human)

*AREX continuously optimizes our products. Webpage content may not reflect the latest updates. For inquiries, please contact info@arexbio.com or your local distributor.

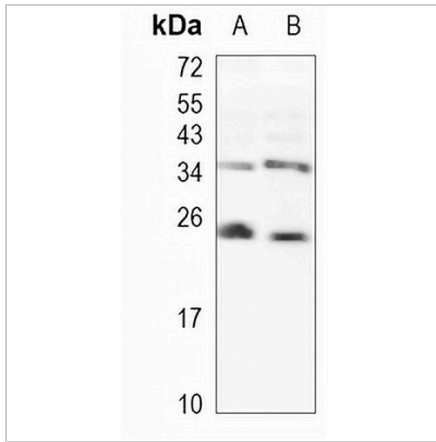
*Clone Number, Reactivity, Source/Host and Clonality can be found in the product name and Key Features section above.

DATASHEET

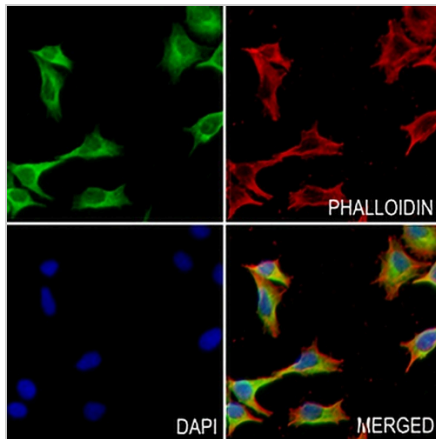
RAB5A Rabbit Monoclonal Antibody(C889)

CAT. NO. AMA00501

DATA



Western blot analysis of RAB5A expression in A549 (A), K562 (B) whole cell lysates. (Predicted band size: 23 kD; Observed band size: 24 kD)



Immunofluorescent analysis of RAB5A staining in A375 cells. Formalin-fixed cells were permeabilized with 0.1% Triton X-100 in TBS for 5-10 minutes and blocked with 3% BSA-PBS for 30 minutes at room temperature. Cells were probed with the primary antibody in 3% BSA-PBS and incubated overnight at 4 °C in a humidified chamber. Cells were washed with PBST and incubated with an AREX® Fluor 488 -conjugated secondary antibody (green) in PBS at room temperature in the dark. Phalloidin - AREX® Fluor 594 was used to stain Actin filaments (red). DAPI was used to stain the cell nuclei (blue).

STORAGE

Store at 4°C short term. For long term storage, store at -20°C, avoiding freeze/thaw cycles.

NOTE

For Research Use Only. Not for diagnostic, therapeutics, prophylactic or in vivo use.