

**DATASHEET**

**ARHGAP26 Rabbit Monoclonal Antibody(C909)**

CAT. NO. AMA00521

**KEY FEATURES**

Target	ARHGAP26	Source / Host	Rabbit
Reactivity	Human, Mouse	Clonality	Monoclonal
Applications	WB, IHC, IF/ICC	Conjugation	Unconjugated
Form / Buffer	Liquid in PBS, pH 7.4, containing 50% glycerol, 0.2% BSA and 0.01% sodium azide.	Storage	at-20°C

**BACKGROUND**

GTPase-activating protein for RHOA and CDC42. Facilitates mitochondrial quality control by promoting Parkin-mediated recruitment of autophagosomes to damaged mitochondria . Negatively regulates the growth of human parainfluenza virus type 2 by inhibiting hPIV-2-mediated RHOA activation via interaction with two of its viral proteins P and V .

**APPLICATION**

To ensure optimal assay performance, AREX recommends conducting reagent titration tailored to each testing system for optimal detection results.

WB	1:500 - 1:1000
IHC	1:50 - 1:200

\*Results are sample-specific. Please refer to your local assay conditions and test parameters for reference.

**PRODUCT OVERVIEW**

Description	Recombinant rabbit monoclonal antibody to ARHGAP26
Specificity	Recognizes endogenous levels of ARHGAP26 protein
Antibody Type	Primary antibody, Recombinant
Immunogen	KLH-conjugated synthetic peptide encompassing a sequence within human ARHGAP26. The exact sequence is proprietary.
Purification	The antibody was purified by immunogen affinity chromatography.
Molecular Weight	Predicted: 92 kD; Observed: 100 kD
Form/Buffer	Liquid in PBS, pH 7.4, containing 50% glycerol, 0.2% BSA and 0.01% sodium azide.
Alternative Names	GRAF; KIAA0621; OPHN1L; Rho GTPase-activating protein 26; GTPase regulator associated with focal adhesion kinase; Oligophrenin-1-like protein; Rho-type GTPase-activating protein 26
Gene Symbol	ARHGAP26
Entrez Gene	23092(Human); 71302(Mouse)
SwissProt	Q9UNA1(Human); Q6ZQ82(Mouse)

\*AREX continuously optimizes our products. Webpage content may not reflect the latest updates. For inquiries, please contact [info@arexbio.com](mailto:info@arexbio.com) or your local distributor.

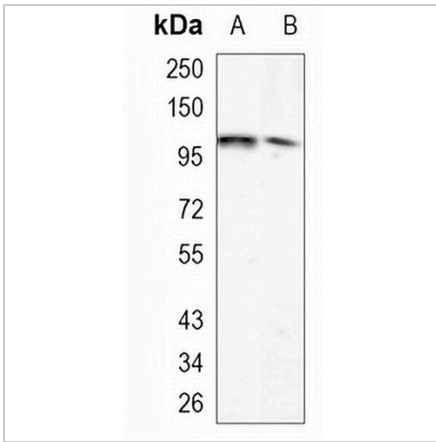
\*Clone Number, Reactivity, Source/Host and Clonality can be found in the product name and Key Features section above.

**DATASHEET**

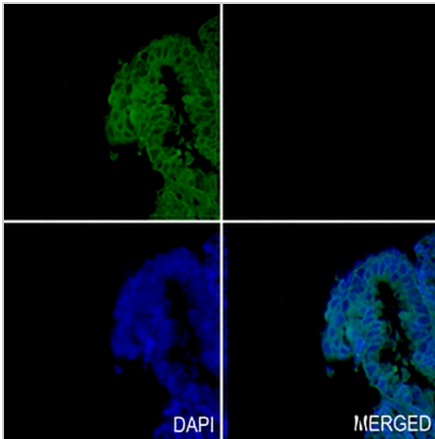
**ARHGAP26 Rabbit Monoclonal Antibody(C909)**

CAT. NO. AMA00521

**DATA**



Western blot analysis of ARHGAP26 expression in A549 (A), mouse muscle (B) whole cell lysates. (Predicted band size: 92 kD; Observed band size: 100 kD)



Immunohistochemical analysis of ARHGAP26 staining in human ovary formalin fixed paraffin embedded tissue section. The section was pre-treated using heat mediated antigen retrieval with sodium citrate buffer (pH 6.0). The section was then incubated with the antibody at room temperature and detected using an HRP conjugated compact polymer system. Tyramide-AREX® Fluor 488 (green) was used as the chromogen. The section was then counterstained with DAPI (blue).

**STORAGE**

Store at 4°C short term. For long term storage, store at -20°C, avoiding freeze/thaw cycles.

**NOTE**

For Research Use Only. Not for diagnostic, therapeutics, prophylactic or in vivo use.