

DATASHEET

ERp5 Rabbit Monoclonal Antibody(C912)

CAT. NO. AMA00524

KEY FEATURES

Target	ERp5	Source / Host	Rabbit
Reactivity	Human, Mouse	Clonality	Monoclonal
Applications	WB	Conjugation	Unconjugated
Form / Buffer	Liquid in PBS, pH 7.4, containing 50% glycerol, 0.2% BSA and 0.01% sodium azide.	Storage	at-20°C

BACKGROUND

May function as a chaperone that inhibits aggregation of misfolded proteins . Negatively regulates the unfolded protein response (UPR) through binding to UPR sensors such as ERN1, which in turn inactivates ERN1 signaling . May also regulate the UPR via the EIF2AK3 UPR sensor . Plays a role in platelet aggregation and activation by agonists such as convulxin, collagen and thrombin .

APPLICATION

To ensure optimal assay performance, AREX recommends conducting reagent titration tailored to each testing system for optimal detection results.

WB	1:500 - 1:1000
----	----------------

*Results are sample-specific. Please refer to your local assay conditions and test parameters for reference.

PRODUCT OVERVIEW

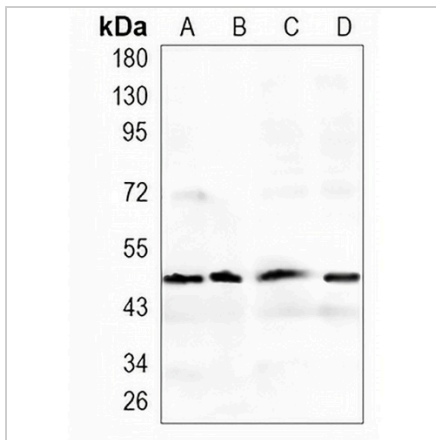
Description	Recombinant rabbit monoclonal antibody to ERp5
Specificity	Recognizes endogenous levels of ERp5 protein
Antibody Type	Primary antibody, Recombinant
Immunogen	KLH-conjugated synthetic peptide encompassing a sequence within human ERp5. The exact sequence is proprietary.
Purification	The antibody was purified by immunogen affinity chromatography.
Molecular Weight	Predicted: 48 kD; Observed: 48 kD
Form/Buffer	Liquid in PBS, pH 7.4, containing 50% glycerol, 0.2% BSA and 0.01% sodium azide.
Alternative Names	ERP5; P5; TXNDC7; Protein disulfide-isomerase A6; Endoplasmic reticulum protein 5; ER protein 5; ERp5; Protein disulfide isomerase P5; Thioredoxin domain-containing protein 7
Gene Symbol	PDIA6
Entrez Gene	10130(Human); 71853(Mouse)
SwissProt	Q15084(Human); Q922R8(Mouse)

*AREX continuously optimizes our products. Webpage content may not reflect the latest updates. For inquiries, please contact info@arexbio.com or your local distributor.

*Clone Number, Reactivity, Source/Host and Clonality can be found in the product name and Key Features section above.

DATASHEET**ERp5 Rabbit Monoclonal Antibody(C912)**

CAT. NO. AMA00524

DATA

Western blot analysis of ERp5 expression in A549 (A), PC3 (B), THP1 (C), mouse liver (D) whole cell lysates. (Predicted band size: 48 kD; Observed band size: 48 kD)

STORAGE

Store at 4°C short term. For long term storage, store at -20°C, avoiding freeze/thaw cycles.

NOTE

For Research Use Only. Not for diagnostic, therapeutics, prophylactic or in vivo use.