

DATASHEET

MYL9 Rabbit Monoclonal Antibody(C927)

CAT. NO. AMA00539

KEY FEATURES

Target	MYL9	Source / Host	Rabbit
Reactivity	Human	Clonality	Monoclonal
Applications	WB, IF/ICC	Conjugation	Unconjugated
Form / Buffer	Liquid in PBS, pH 7.4, containing 50% glycerol, 0.2% BSA and 0.01% sodium azide.	Storage	at-20°C

BACKGROUND

Myosin regulatory subunit that plays an important role in regulation of both smooth muscle and nonmuscle cell contractile activity via its phosphorylation. Implicated in cytokinesis, receptor capping, and cell locomotion . In myoblasts, may regulate PIEZO1-dependent cortical actomyosin assembly involved in myotube formation .

APPLICATION

To ensure optimal assay performance, AREX recommends conducting reagent titration tailored to each testing system for optimal detection results.

WB	1:500 - 1:1000
IF/ICC	1:50 - 1:200

*Results are sample-specific. Please refer to your local assay conditions and test parameters for reference.

PRODUCT OVERVIEW

Description	Recombinant rabbit monoclonal antibody to MYL9
Specificity	Recognizes endogenous levels of MYL9 protein
Antibody Type	Primary antibody, Recombinant
Immunogen	KLH-conjugated synthetic peptide encompassing a sequence within human MYL9. The exact sequence is proprietary.
Purification	The antibody was purified by immunogen affinity chromatography.
Molecular Weight	Predicted: 19 kD; Observed: 18 kD
Form/Buffer	Liquid in PBS, pH 7.4, containing 50% glycerol, 0.2% BSA and 0.01% sodium azide.
Alternative Names	MLC2; MRLC1; MYRL2; Myosin regulatory light polypeptide 9; 20 kDa myosin light chain; LC20; MLC-2C; Myosin RLC; Myosin regulatory light chain 2, smooth muscle isoform; Myosin regulatory light chain 9; Myosin regulatory light chain MRLC1
Gene Symbol	MYL9
Entrez Gene	10398(Human)
SwissProt	P24844(Human)

*AREX continuously optimizes our products. Webpage content may not reflect the latest updates. For inquiries, please contact info@arexbio.com or your local distributor.

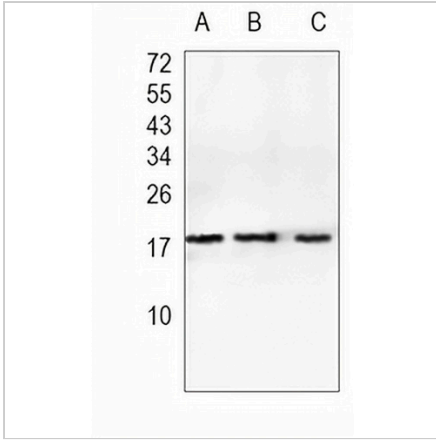
*Clone Number, Reactivity, Source/Host and Clonality can be found in the product name and Key Features section above.

DATASHEET

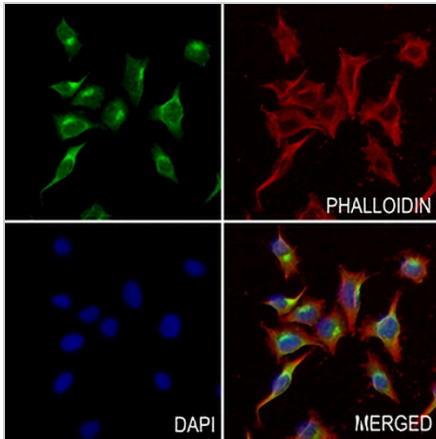
MYL9 Rabbit Monoclonal Antibody(C927)

CAT. NO. AMA00539

DATA



Western blot analysis of MYL9 expression in H1792 (A), HeLa (B), THP1 (C) whole cell lysates. (Predicted band size: 19 kD; Observed band size: 18 kD)



Immunofluorescent analysis of MYL9 staining in A375 cells. Formalin-fixed cells were permeabilized with 0.1% Triton X-100 in TBS for 5-10 minutes and blocked with 3% BSA-PBS for 30 minutes at room temperature. Cells were probed with the primary antibody in 3% BSA-PBS and incubated overnight at 4 °C in a humidified chamber. Cells were washed with PBST and incubated with an AREX® Fluor 488 -conjugated secondary antibody (green) in PBS at room temperature in the dark. Phalloidin - AREX® Fluor 594 was used to stain Actin filaments (red). DAPI was used to stain the cell nuclei (blue).

STORAGE

Store at 4°C short term. For long term storage, store at -20°C, avoiding freeze/thaw cycles.

NOTE

For Research Use Only. Not for diagnostic, therapeutics, prophylactic or in vivo use.