

DATASHEET

MS4A14 Rabbit Monoclonal Antibody(C944)

CAT. NO. AMA00556

KEY FEATURES

Target	MS4A14	Source / Host	Rabbit
Reactivity	Human	Clonality	Monoclonal
Applications	WB	Conjugation	Unconjugated
Form / Buffer	Liquid in PBS, pH 7.4, containing 50% glycerol, 0.2% BSA and 0.01% sodium azide.	Storage	at-20°C

BACKGROUND

May be involved in signal transduction as a component of a multimeric receptor complex.

APPLICATION

To ensure optimal assay performance, AREX recommends conducting reagent titration tailored to each testing system for optimal detection results.

WB	1:500 - 1:1000
----	----------------

*Results are sample-specific. Please refer to your local assay conditions and test parameters for reference.

PRODUCT OVERVIEW

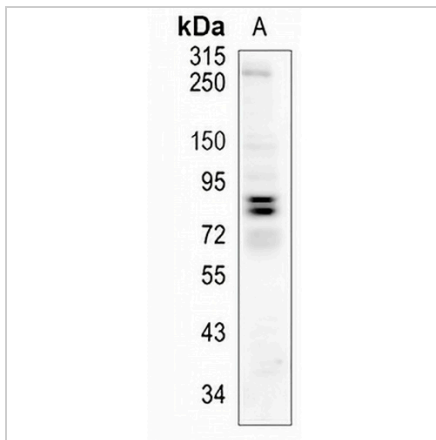
Description	Recombinant rabbit monoclonal antibody to MS4A14
Specificity	Recognizes endogenous levels of MS4A14 protein
Antibody Type	Primary antibody, Recombinant
Immunogen	KLH-conjugated synthetic peptide encompassing a sequence within human MS4A14. The exact sequence is proprietary.
Purification	The antibody was purified by immunogen affinity chromatography.
Molecular Weight	Predicted: 76; Observed: 80 kD
Form/Buffer	Liquid in PBS, pH 7.4, containing 50% glycerol, 0.2% BSA and 0.01% sodium azide.
Alternative Names	MS4A13; MS4A16; Membrane-spanning 4-domains subfamily A member 14; Testis development protein NYD-SP21
Gene Symbol	MS4A14
Entrez Gene	84689(Human)
SwissProt	Q96JA4(Human)

*AREX continuously optimizes our products. Webpage content may not reflect the latest updates. For inquiries, please contact info@arexbio.com or your local distributor.

*Clone Number, Reactivity, Source/Host and Clonality can be found in the product name and Key Features section above.

DATASHEET**MS4A14 Rabbit Monoclonal Antibody(C944)**

CAT. NO. AMA00556

DATA

Western blot analysis of MS4A14 expression in HCT116 (A) whole cell lysates. (Predicted band size: 76; 74; 67; 80 kD; Observed band size: 80 kD)

STORAGE

Store at 4°C short term. For long term storage, store at -20°C, avoiding freeze/thaw cycles.

NOTE

For Research Use Only. Not for diagnostic, therapeutics, prophylactic or in vivo use.