

DATASHEET

Histone H2A Rabbit Monoclonal Antibody(C951)

CAT. NO. AMA00563

KEY FEATURES

Target	Histone H2A	Source / Host	Rabbit
Reactivity	Human	Clonality	Monoclonal
Applications	WB	Conjugation	Unconjugated
Form / Buffer	Liquid in PBS, pH 7.4, containing 50% glycerol, 0.2% BSA and 0.01% sodium azide.	Storage	at-20°C

BACKGROUND

Core component of nucleosome. Nucleosomes wrap and compact DNA into chromatin, limiting DNA accessibility to the cellular machineries which require DNA as a template. Histones thereby play a central role in transcription regulation, DNA repair, DNA replication and chromosomal stability. DNA accessibility is regulated via a complex set of post-translational modifications of histones, also called histone code, and nucleosome remodeling.

APPLICATION

To ensure optimal assay performance, AREX recommends conducting reagent titration tailored to each testing system for optimal detection results.

WB	1:500 - 1:1000
----	----------------

*Results are sample-specific. Please refer to your local assay conditions and test parameters for reference.

PRODUCT OVERVIEW

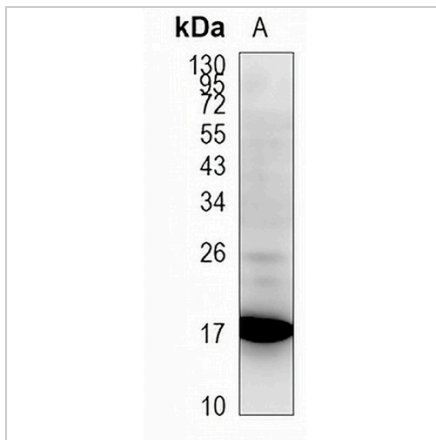
Description	Recombinant rabbit monoclonal antibody to Histone H2A
Specificity	Recognizes endogenous levels of Histone H2A protein
Antibody Type	Primary antibody, Recombinant
Immunogen	KLH-conjugated synthetic peptide encompassing a sequence within human Histone H2A. The exact sequence is proprietary.
Purification	The antibody was purified by immunogen affinity chromatography.
Molecular Weight	Predicted: 14 kD; Observed: 14; 17kD
Form/Buffer	Liquid in PBS, pH 7.4, containing 50% glycerol, 0.2% BSA and 0.01% sodium azide.
Alternative Names	HIST1H2AG; H2AFP; HIST1H2AI; H2AFC; HIST1H2AK; H2AFD; HIST1H2AL; H2AFI; HIST1H2AM; H2AFN; Histone H2A type 1; H2A.1; Histone H2A/p; HIST3H2A; Histone H2A type 3; HIST1H2AA; H2AFR; Histone H2A type 1-A; Histone H2A/r; HIST1H2AB; H2AFM; HIST1H2AE; H2AFA; Histone H2A type 1-B/E; Histone H2A.2; Histone H2A/a; Histone H2A/m; HIST2H2AA3; H2AFO; HIST2H2AA; HIST2H2AA4; Histone H2A type 2-A; Histone H2A.2; Histone H2A/o; HIST1H2AD; H2AFG; Histone H2A type 1-D; Histone H2A.3; Histone H2A/g; HIST1H2AH; HIST1H2AI; Histone H2A type 1-H; Histone H2A/s; HIST1H2AC; H2AFL; Histone H2A type 1-C; Histone H2A/l; HIST1H2AJ; H2AFE; Histone H2A type 1-J; Histone H2A/e; HIST2H2AB; Histone H2A type 2-B; HIST2H2AC; H2AFQ; Histone H2A type 2-C; Histone H2A-GL101; Histone H2A/q; H2AFJ; Histone H2A.J; H2a/j
Gene Symbol	HIST1H2AB
Entrez Gene	8329; 8330; 8332; 8336; 8969; 723790; 8337; 92815(Human)
SwissProt	P04908; P0C058; P20671; Q16777; Q6F113; Q7L7L0; Q8IUE6; Q93077; Q96KK5; Q96QV6; Q99878(Human)

*AREX continuously optimizes our products. Webpage content may not reflect the latest updates. For inquiries, please contact info@arexbio.com or your local distributor.

*Clone Number, Reactivity, Source/Host and Clonality can be found in the product name and Key Features section above.

DATASHEET**Histone H2A Rabbit Monoclonal Antibody(C951)**

CAT. NO. AMA00563

DATA

Western blot analysis of Histone H2A expression in HEK293T (A) whole cell lysates.
(Predicted band size: 14 kD; Observed band size: 14; 17kD)

STORAGE

Store at 4°C short term. For long term storage, store at -20°C, avoiding freeze/thaw cycles.

NOTE

For Research Use Only. Not for diagnostic, therapeutics, prophylactic or in vivo use.