

DATASHEET
TEAD1/2/3/4 Rabbit Monoclonal Antibody(C960)
CAT. NO. AMA00572
KEY FEATURES

Target	TEAD1/2/3/4	Source / Host	Rabbit
Reactivity	Human	Clonality	Monoclonal
Applications	WB	Conjugation	Unconjugated
Form / Buffer	Liquid in PBS, pH 7.4, containing 50% glycerol, 0.2% BSA and 0.01% sodium azide.	Storage	at-20°C

BACKGROUND

Transcription factor which plays a key role in the Hippo signaling pathway, a pathway involved in organ size control and tumor suppression by restricting proliferation and promoting apoptosis. The core of this pathway is composed of a kinase cascade wherein MST1/MST2, in complex with its regulatory protein SAV1, phosphorylates and activates LATS1/2 in complex with its regulatory protein MOB1, which in turn phosphorylates and inactivates YAP1 oncoprotein and WWTR1/TAZ. Acts by mediating gene expression of YAP1 and WWTR1/TAZ, thereby regulating cell proliferation, migration and epithelial mesenchymal transition (EMT) induction. Binds specifically and cooperatively to the SPH and GT-IIC 'enhancers' (5'-GTGGAATGT-3') and activates transcription in vivo in a cell-specific manner.

APPLICATION

To ensure optimal assay performance, AREX recommends conducting reagent titration tailored to each testing system for optimal detection results.

WB	1:500 - 1:1000
----	----------------

*Results are sample-specific. Please refer to your local assay conditions and test parameters for reference.

PRODUCT OVERVIEW

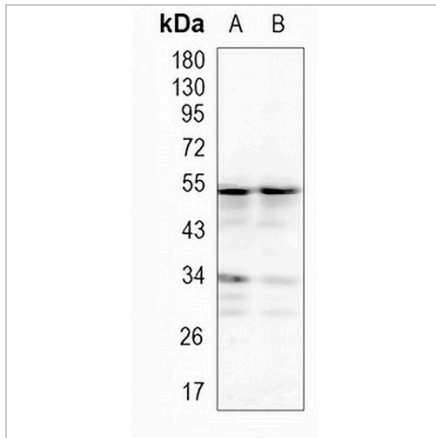
Description	Recombinant rabbit monoclonal antibody to TEAD1/2/3/4
Specificity	Recognizes endogenous levels of TEAD1/2/3/4 protein
Antibody Type	Primary antibody, Recombinant
Immunogen	KLH-conjugated synthetic peptide encompassing a sequence within human TEAD1/2/3/4. The exact sequence is proprietary.
Purification	The antibody was purified by immunogen affinity chromatography.
Molecular Weight	Predicted: 47; Observed: 54 kD
Form/Buffer	Liquid in PBS, pH 7.4, containing 50% glycerol, 0.2% BSA and 0.01% sodium azide.
Alternative Names	TCF13; TEF1; Transcriptional enhancer factor TEF-1; NTEF-1; Protein GT-IIC; TEA domain family member 1; TEAD-1; Transcription factor 13; TCF-13; TEF4; Transcriptional enhancer factor TEF-4; TEA domain family member 2; TEAD-2; TEAD5; TEF5; Transcriptional enhancer factor TEF-5; DTEF-1; TEA domain family member 3; TEAD-3; RTEF1; TCF13L1; TEF3; Transcriptional enhancer factor TEF-3; TEA domain family member 4; TEAD-4; Transcription factor 13-like 1; Transcription factor RTEF-1
Gene Symbol	TEAD1; TEAD2 ;TEAD3; TEAD4
Entrez Gene	7003; 8463; 7005; 7004(Human)
SwissProt	P28347; Q15561; Q15562; Q99594(Human)

*AREX continuously optimizes our products. Webpage content may not reflect the latest updates. For inquiries, please contact info@arexbio.com or your local distributor.

*Clone Number, Reactivity, Source/Host and Clonality can be found in the product name and Key Features section above.

DATASHEET**TEAD1/2/3/4 Rabbit Monoclonal Antibody(C960)**

CAT. NO. AMA00572

DATA

Western blot analysis of TEAD1/2/3/4 expression in HEK293T (A), A549 (B) whole cell lysates. (Predicted band size: 47; 40 kD; Observed band size: 54 kD)

STORAGE

Store at 4°C short term. For long term storage, store at -20°C, avoiding freeze/thaw cycles.

NOTE

For Research Use Only. Not for diagnostic, therapeutics, prophylactic or in vivo use.