

**DATASHEET**

**CaMK2 alpha/beta/delta/gamma Rabbit Monoclonal Antibody(C993)**

CAT. NO. AMA00605

**KEY FEATURES**

Target	CaMK2 alpha/beta/delta/gamma	Source / Host	Rabbit
Reactivity	Human, Mouse	Clonality	Monoclonal
Applications	WB	Conjugation	Unconjugated
Form / Buffer	Liquid in PBS, pH 7.4, containing 50% glycerol, 0.2% BSA and 0.01% sodium azide.	Storage	at-20°C

**BACKGROUND**

Calcium/calmodulin-dependent protein kinase that functions autonomously after Ca(2+)/calmodulin-binding and autophosphorylation, and is involved in various processes, such as synaptic plasticity, neurotransmitter release and long-term potentiation /calmodulin-binding and autophosphorylation, and is involved in various processes, such as synaptic plasticity, neurotransmitter release and long-term potentiation . Member of the NMDAR signaling complex in excitatory synapses, it regulates NMDAR-dependent potentiation of the AMPAR and therefore excitatory synaptic transmission . Regulates dendritic spine development . Also regulates the migration of developing neurons . Phosphorylates the transcription factor FOXO3 to activate its transcriptional activity .

**APPLICATION**

To ensure optimal assay performance, AREX recommends conducting reagent titration tailored to each testing system for optimal detection results.

WB	1:500 - 1:1000
----	----------------

\*Results are sample-specific. Please refer to your local assay conditions and test parameters for reference.

**PRODUCT OVERVIEW**

Description	Recombinant rabbit monoclonal antibody to CaMK2 alpha/beta/delta/gamma
Specificity	Recognizes endogenous levels of CaMK2 alpha/beta/delta/gamma protein
Antibody Type	Primary antibody, Recombinant
Immunogen	KLH-conjugated synthetic peptide encompassing a sequence within human CaMK2 alpha/beta/delta/gamma. The exact sequence is proprietary.
Purification	The antibody was purified by immunogen affinity chromatography.
Molecular Weight	Predicted: 54; Observed: 54 kD
Form/Buffer	Liquid in PBS, pH 7.4, containing 50% glycerol, 0.2% BSA and 0.01% sodium azide.
Alternative Names	CAMK2A; CAMKA; KIAA0968; Calcium/calmodulin-dependent protein kinase type II subunit alpha; CaM kinase II subunit alpha; CaMK-II subunit alpha; CAMK2B; CAM2; CAMK2; CAMKB; Calcium/calmodulin-dependent protein kinase type II subunit beta; CaM kinase II subunit beta; CaMK-II subunit beta; CAMK2D; CAMKD; Calcium/calmodulin-dependent protein kinase type II subunit delta; CaM kinase II subunit delta; CaMK-II subunit delta; CAMK; CAMK-II; CAMKG; Calcium/calmodulin-dependent protein kinase type II subunit gamma; CaM kinase II subunit gamma; CaMK-II subunit gamma
Gene Symbol	CAMK2A; CAMK2B; CAMK2D; CAMK2G
Entrez Gene	815; 816; 817; 818(Human); 12322; 12323; 108058; 12325(Mouse)
SwissProt	Q9UQM7; Q13554; Q13555; Q13557(Human); P11798; P28652; Q6PHZ2; Q923T9(Mouse)

\*AREX continuously optimizes our products. Webpage content may not reflect the latest updates. For inquiries, please contact [info@arexbio.com](mailto:info@arexbio.com) or your local distributor.

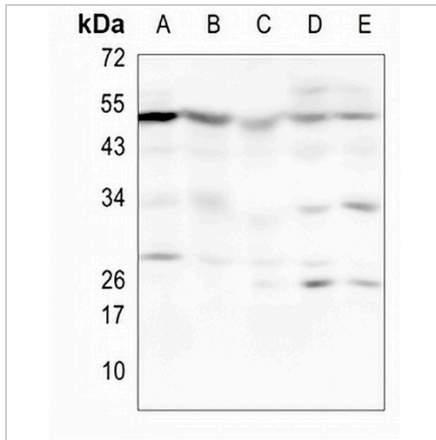
\*Clone Number, Reactivity, Source/Host and Clonality can be found in the product name and Key Features section above.

**DATASHEET**

**CaMK2 alpha/beta/delta/gamma Rabbit Monoclonal Antibody(C993)**

CAT. NO. AMA00605

**DATA**



Western blot analysis of CaMK2 alpha/beta/delta/gamma expression in HEK293T (A), H1792 (B), LOVO (C), mouse liver (D), mouse kidney (E) whole cell lysates. (Predicted band size: 54; 55; 72; 56; 62; 58 kD; Observed band size: 54 kD)

**STORAGE**

Store at 4°C short term. For long term storage, store at -20°C, avoiding freeze/thaw cycles.

**NOTE**

For Research Use Only. Not for diagnostic, therapeutics, prophylactic or in vivo use.