

DATASHEET

PHF8 Rabbit Monoclonal Antibody(C1021)

CAT. NO. AMA00633

KEY FEATURES

Target	PHF8	Source / Host	Rabbit
Reactivity	Human	Clonality	Monoclonal
Applications	WB	Conjugation	Unconjugated
Form / Buffer	Liquid in PBS, pH 7.4, containing 50% glycerol, 0.2% BSA and 0.01% sodium azide.	Storage	at-20°C

BACKGROUND

Histone lysine demethylase with selectivity for mono- and dimethylated residues. It plays an essential role in cell cycle progression and rDNA transcription . Demethylates mono- and dimethylated histone H3 'Lys-9' residue (H3K9Me1 and H3K9Me2) and monomethylated histone H4 'Lys-20' residue (H4K20Me1). Acts as a transcription activator as H3K9Me1, H3K9Me2, H3K27Me2 and H4K20Me1 are epigenetic repressive marks . Displays a very low intrinsic activity toward dimethylated H3 'Lys-27' (H3K27Me2) . May also have weak activity toward dimethylated H3 'Lys-36' (H3K36Me2), however, the relevance of this result remains unsure in vivo . Involved in cell cycle progression by being required to control G1-S transition .

APPLICATION

To ensure optimal assay performance, AREX recommends conducting reagent titration tailored to each testing system for optimal detection results.

WB	1:500 - 1:1000
----	----------------

*Results are sample-specific. Please refer to your local assay conditions and test parameters for reference.

PRODUCT OVERVIEW

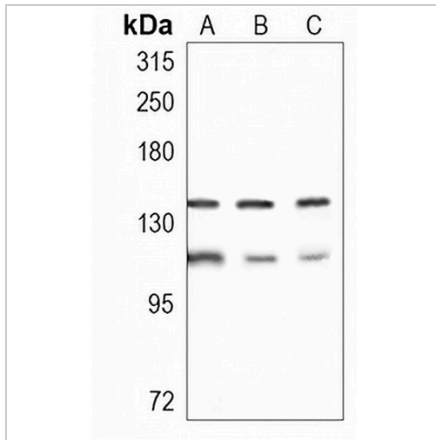
Description	Recombinant rabbit monoclonal antibody to PHF8
Specificity	Recognizes endogenous levels of PHF8 protein
Antibody Type	Primary antibody, Recombinant
Immunogen	KLH-conjugated synthetic peptide encompassing a sequence within human PHF8. The exact sequence is proprietary.
Purification	The antibody was purified by immunogen affinity chromatography.
Molecular Weight	Predicted: 117; Observed: 140; 117 kD
Form/Buffer	Liquid in PBS, pH 7.4, containing 50% glycerol, 0.2% BSA and 0.01% sodium azide.
Alternative Names	KIAA1111; ZNF422; Histone lysine demethylase PHF8; PHD finger protein 8
Gene Symbol	PHF8
Entrez Gene	23133(Human)
SwissProt	Q9UPP1(Human)

*AREX continuously optimizes our products. Webpage content may not reflect the latest updates. For inquiries, please contact info@arexbio.com or your local distributor.

*Clone Number, Reactivity, Source/Host and Clonality can be found in the product name and Key Features section above.

DATASHEET**PHF8 Rabbit Monoclonal Antibody(C1021)**

CAT. NO. AMA00633

DATA

Western blot analysis of PHF8 expression in HEK293T (A), HepG2 (B), K562 (C) whole cell lysates. (Predicted band size: 117; 113; 105; 106; 98 kD; Observed band size: 140; 117 kD)

STORAGE

Store at 4°C short term. For long term storage, store at -20°C, avoiding freeze/thaw cycles.

NOTE

For Research Use Only. Not for diagnostic, therapeutics, prophylactic or in vivo use.