

DATASHEET

RAP1A/B Rabbit Monoclonal Antibody(C1034)

CAT. NO. AMA00646

KEY FEATURES

Target	RAP1A/B	Source / Host	Rabbit
Reactivity	Human, Mouse, Rat	Clonality	Monoclonal
Applications	WB	Conjugation	Unconjugated
Form / Buffer	Liquid in PBS, pH 7.4, containing 50% glycerol, 0.2% BSA and 0.01% sodium azide.	Storage	at-20°C

BACKGROUND

Counteracts the mitogenic function of Ras, at least partly because it can interact with Ras GAPs and RAF in a competitive manner. Together with ITGB1BP1, regulates KRIT1 localization to microtubules and membranes. Plays a role in nerve growth factor (NGF)-induced neurite outgrowth. Plays a role in the regulation of embryonic blood vessel formation. Involved in the establishment of basal endothelial barrier function. Facilitates the progressive accumulation of CDH1 at mature desmosome junctions via cAMP-dependent signaling and its interaction with PKP3. May be involved in the regulation of the vascular endothelial growth factor receptor KDR expression at endothelial cell-cell junctions.

APPLICATION

To ensure optimal assay performance, AREX recommends conducting reagent titration tailored to each testing system for optimal detection results.

WB	1:500 - 1:1000
----	----------------

*Results are sample-specific. Please refer to your local assay conditions and test parameters for reference.

PRODUCT OVERVIEW

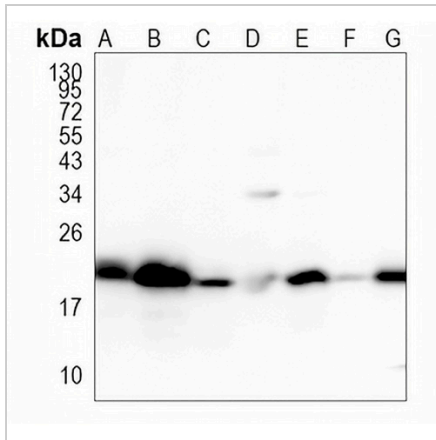
Description	Recombinant rabbit monoclonal antibody to RAP1A/B
Specificity	Recognizes endogenous levels of RAP1A/B protein
Antibody Type	Primary antibody, Recombinant
Immunogen	KLH-conjugated synthetic peptide encompassing a sequence within human RAP1A/B. The exact sequence is proprietary.
Purification	The antibody was purified by immunogen affinity chromatography.
Molecular Weight	Predicted: 20; Observed: 21 kD
Form/Buffer	Liquid in PBS, pH 7.4, containing 50% glycerol, 0.2% BSA and 0.01% sodium azide.
Alternative Names	KREV1; Ras-related protein Rap-1A; C21KG; G-22K; GTP-binding protein smg p21A; Ras-related protein Krev-1; Ras-related protein Rap-1b; GTP-binding protein smg p21B
Gene Symbol	RAP1A; RAP1B
Entrez Gene	5906; 5908(Human); 109905; 215449(Mouse); 295347(Rat)
SwissProt	P62834; P61224(Human); P62835; Q99JI6(Mouse); P62836(Rat)

*AREX continuously optimizes our products. Webpage content may not reflect the latest updates. For inquiries, please contact info@arexbio.com or your local distributor.

*Clone Number, Reactivity, Source/Host and Clonality can be found in the product name and Key Features section above.

DATASHEET**RAP1A/B Rabbit Monoclonal Antibody(C1034)**

CAT. NO. AMA00646

DATA

Western blot analysis of RAP1A/B expression in HEK293T (A), Jurkat (B), PC3 (C), mouse liver (D), mouse kidney (E), rat liver (F), rat kidney (G) whole cell lysates. (Predicted band size: 20; 15; 18; 16 kD; Observed band size: 21 kD)

STORAGE

Store at 4°C short term. For long term storage, store at -20°C, avoiding freeze/thaw cycles.

NOTE

For Research Use Only. Not for diagnostic, therapeutics, prophylactic or in vivo use.