

DATASHEET

NUP50 Rabbit Monoclonal Antibody(C1035)

CAT. NO. AMA00647

KEY FEATURES

Target	NUP50	Source / Host	Rabbit
Reactivity	Human	Clonality	Monoclonal
Applications	WB, IHC	Conjugation	Unconjugated
Form / Buffer	Liquid in PBS, pH 7.4, containing 50% glycerol, 0.2% BSA and 0.01% sodium azide.	Storage	at-20°C

BACKGROUND

Component of the nuclear pore complex that has a direct role in nuclear protein import . Actively displaces NLSs from importin-alpha, and facilitates disassembly of the importin-alpha:beta-cargo complex and importin recycling . Interacts with regulatory proteins of cell cycle progression including CDKN1B . This interaction is required for correct intracellular transport and degradation of CDKN1B .

APPLICATION

To ensure optimal assay performance, AREX recommends conducting reagent titration tailored to each testing system for optimal detection results.

WB	1:500 - 1:1000
IHC	1:50 - 1:200

*Results are sample-specific. Please refer to your local assay conditions and test parameters for reference.

PRODUCT OVERVIEW

Description	Recombinant rabbit monoclonal antibody to NUP50
Specificity	Recognizes endogenous levels of NUP50 protein
Antibody Type	Primary antibody, Recombinant
Immunogen	KLH-conjugated synthetic peptide encompassing a sequence within human NUP50. The exact sequence is proprietary.
Purification	The antibody was purified by immunogen affinity chromatography.
Molecular Weight	Predicted: 50 kD; Observed: 55 kD
Form/Buffer	Liquid in PBS, pH 7.4, containing 50% glycerol, 0.2% BSA and 0.01% sodium azide.
Alternative Names	NPAP60L; Nuclear pore complex protein Nup50; 50 kDa nucleoporin; Nuclear pore-associated protein 60 kDa-like; Nucleoporin Nup50
Gene Symbol	NUP50
Entrez Gene	10762(Human)
SwissProt	Q9UKX7(Human)

*AREX continuously optimizes our products. Webpage content may not reflect the latest updates. For inquiries, please contact info@arexbio.com or your local distributor.

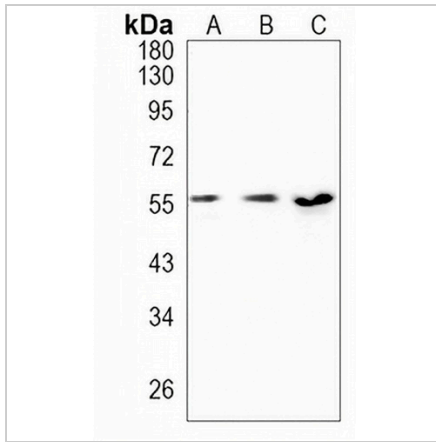
*Clone Number, Reactivity, Source/Host and Clonality can be found in the product name and Key Features section above.

DATASHEET

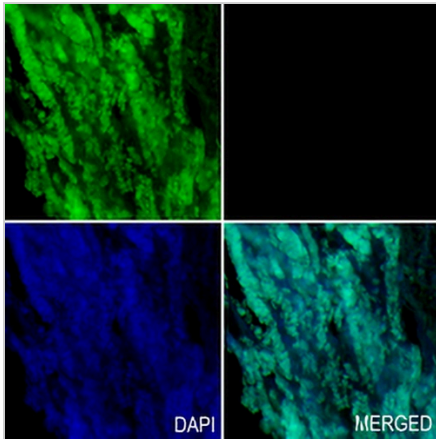
NUP50 Rabbit Monoclonal Antibody(C1035)

CAT. NO. AMA00647

DATA



Western blot analysis of NUP50 expression in HEK293T (A), Jurkat (B), THP1 (C) whole cell lysates. (Predicted band size: 50 kD; Observed band size: 55 kD)



Immunohistochemical analysis of NUP50 staining in human liver cancer formalin fixed paraffin embedded tissue section. The section was pre-treated using heat mediated antigen retrieval with sodium citrate buffer (pH 6.0). The section was then incubated with the antibody at room temperature and detected using an HRP conjugated compact polymer system. Tyramide-AREX® Fluor 488 (green) was used as the chromogen. The section was then counterstained with DAPI (blue).

STORAGE

Store at 4°C short term. For long term storage, store at -20°C, avoiding freeze/thaw cycles.

NOTE

For Research Use Only. Not for diagnostic, therapeutics, prophylactic or in vivo use.