

DATASHEET

RNF7 Rabbit Monoclonal Antibody(C1041)

CAT. NO. AMA00653

KEY FEATURES

Target	RNF7	Source / Host	Rabbit
Reactivity	Human	Clonality	Monoclonal
Applications	WB	Conjugation	Unconjugated
Form / Buffer	Liquid in PBS, pH 7.4, containing 50% glycerol, 0.2% BSA and 0.01% sodium azide.	Storage	at-20°C

BACKGROUND

Catalytic component of multiple cullin-5-RING E3 ubiquitin-protein ligase complexes (ECS complexes), which mediate the ubiquitination and subsequent proteasomal degradation of target proteins, which mediate the ubiquitination and subsequent proteasomal degradation of target proteins. It is thereby involved in various biological processes, such as cell cycle progression, signal transduction and transcription. The functional specificity of the E3 ubiquitin-protein ligase ECS complexes depend on the variable SOCS box-containing substrate recognition component. Within ECS complexes, RNF7/RBX2 recruits the E2 ubiquitination enzyme to the complex via its RING-type and brings it into close proximity to the substrate.

APPLICATION

To ensure optimal assay performance, AREX recommends conducting reagent titration tailored to each testing system for optimal detection results.

WB	1:500 - 1:1000
----	----------------

*Results are sample-specific. Please refer to your local assay conditions and test parameters for reference.

PRODUCT OVERVIEW

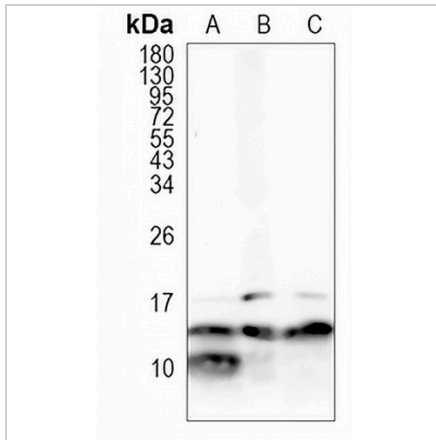
Description	Recombinant rabbit monoclonal antibody to RNF7
Specificity	Recognizes endogenous levels of RNF7 protein
Antibody Type	Primary antibody, Recombinant
Immunogen	KLH-conjugated synthetic peptide encompassing a sequence within human RNF7. The exact sequence is proprietary.
Purification	The antibody was purified by immunogen affinity chromatography.
Molecular Weight	Predicted: 12 kD; Observed: 13 kD
Form/Buffer	Liquid in PBS, pH 7.4, containing 50% glycerol, 0.2% BSA and 0.01% sodium azide.
Alternative Names	RBX2; ROC2; SAG; RING-box protein 2; Rbx2; CKII beta-binding protein 1; CKBBP1; RING finger protein 7; Regulator of cullins 2; Sensitive to apoptosis gene protein
Gene Symbol	RNF7
Entrez Gene	9616(Human)
SwissProt	Q9UBF6(Human)

*AREX continuously optimizes our products. Webpage content may not reflect the latest updates. For inquiries, please contact info@arexbio.com or your local distributor.

*Clone Number, Reactivity, Source/Host and Clonality can be found in the product name and Key Features section above.

DATASHEET**RNF7 Rabbit Monoclonal Antibody(C1041)**

CAT. NO. AMA00653

DATA

Western blot analysis of RNF7 expression in HEK293T (A), K562 (B), A549 (C) whole cell lysates. (Predicted band size: 12 kD; Observed band size: 13 kD)

STORAGE

Store at 4°C short term. For long term storage, store at -20°C, avoiding freeze/thaw cycles.

NOTE

For Research Use Only. Not for diagnostic, therapeutics, prophylactic or in vivo use.