

DATASHEET

NAT10 Rabbit Monoclonal Antibody(C1044)

CAT. NO. AMA00656

KEY FEATURES

Target	NAT10	Source / Host	Rabbit
Reactivity	Human	Clonality	Monoclonal
Applications	WB, IHC	Conjugation	Unconjugated
Form / Buffer	Liquid in PBS, pH 7.4, containing 50% glycerol, 0.2% BSA and 0.01% sodium azide.	Storage	at-20°C

BACKGROUND

RNA cytidine acetyltransferase that catalyzes the formation of N(4)-acetylcytidine (ac4C) modification on mRNAs, 18S rRNA and tRNAs -acetylcytidine (ac4C) modification on mRNAs, 18S rRNA and tRNAs . Catalyzes ac4C modification of a broad range of mRNAs, enhancing mRNA stability and translation . mRNA ac4C modification is frequently present within wobble cytidine sites and promotes translation efficiency . Mediates the formation of ac4C at position 1842 in 18S rRNA . May also catalyze the formation of ac4C at position 1337 in 18S rRNA . Required for early nucleolar cleavages of precursor rRNA at sites A0, A1 and A2 during 18S rRNA synthesis . Catalyzes the formation of ac4C in serine and leucine tRNAs .

APPLICATION

To ensure optimal assay performance, AREX recommends conducting reagent titration tailored to each testing system for optimal detection results.

WB	1:500 - 1:1000
IHC	1:50 - 1:200

*Results are sample-specific. Please refer to your local assay conditions and test parameters for reference.

PRODUCT OVERVIEW

Description	Recombinant rabbit monoclonal antibody to NAT10
Specificity	Recognizes endogenous levels of NAT10 protein
Antibody Type	Primary antibody, Recombinant
Immunogen	KLH-conjugated synthetic peptide encompassing a sequence within human NAT10. The exact sequence is proprietary.
Purification	The antibody was purified by immunogen affinity chromatography.
Molecular Weight	Predicted: 115 kD; Observed: 116 kD
Form/Buffer	Liquid in PBS, pH 7.4, containing 50% glycerol, 0.2% BSA and 0.01% sodium azide.
Alternative Names	ALP; KIAA1709; N-acetyltransferase 10
Gene Symbol	NAT10
Entrez Gene	55226(Human)
SwissProt	Q9H0A0(Human)

*AREX continuously optimizes our products. Webpage content may not reflect the latest updates. For inquiries, please contact info@arexbio.com or your local distributor.

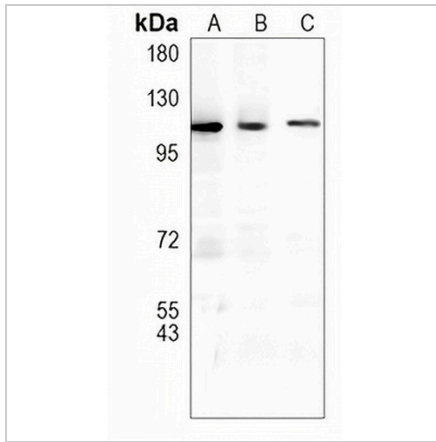
*Clone Number, Reactivity, Source/Host and Clonality can be found in the product name and Key Features section above.

DATASHEET

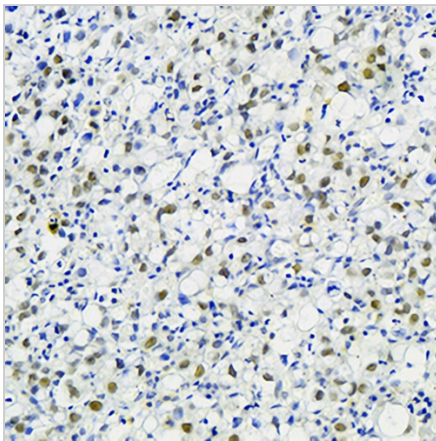
NAT10 Rabbit Monoclonal Antibody(C1044)

CAT. NO. AMA00656

DATA



Western blot analysis of NAT10 expression in HEK293T (A), K562 (B), HeLa (C) whole cell lysates. (Predicted band size: 115 kD; Observed band size: 116 kD)



Immunohistochemical analysis of NAT10 staining in human stomach formalin fixed paraffin embedded tissue section. The section was pre-treated using heat mediated antigen retrieval with sodium citrate buffer (pH 6.0). The section was then incubated with the antibody at room temperature and detected using an HRP conjugated compact polymer system. DAB was used as the chromogen. The section was then counterstained with haematoxylin and mounted with DPX.

STORAGE

Store at 4°C short term. For long term storage, store at -20°C, avoiding freeze/thaw cycles.

NOTE

For Research Use Only. Not for diagnostic, therapeutics, prophylactic or in vivo use.