

DATASHEET

ELP4 Rabbit Monoclonal Antibody(C1050)

CAT. NO. AMA00662

KEY FEATURES

Target	ELP4	Source / Host	Rabbit
Reactivity	Human	Clonality	Monoclonal
Applications	WB	Conjugation	Unconjugated
Form / Buffer	Liquid in PBS, pH 7.4, containing 50% glycerol, 0.2% BSA and 0.01% sodium azide.	Storage	at-20°C

BACKGROUND

Component of the elongator complex which is required for multiple tRNA modifications, including mcm5U (5-methoxycarbonylmethyl uridine), mcm5s2U (5-methoxycarbonylmethyl-2-thiouridine), and ncm5U (5-carbamoylmethyl uridine), mcm5s2U (5-methoxycarbonylmethyl-2-thiouridine), and ncm5U (5-carbamoylmethyl uridine). The elongator complex catalyzes the formation of carboxymethyluridine in the wobble base at position 34 in tRNAs.

APPLICATION

To ensure optimal assay performance, AREX recommends conducting reagent titration tailored to each testing system for optimal detection results.

WB	1:500 - 1:1000
----	----------------

*Results are sample-specific. Please refer to your local assay conditions and test parameters for reference.

PRODUCT OVERVIEW

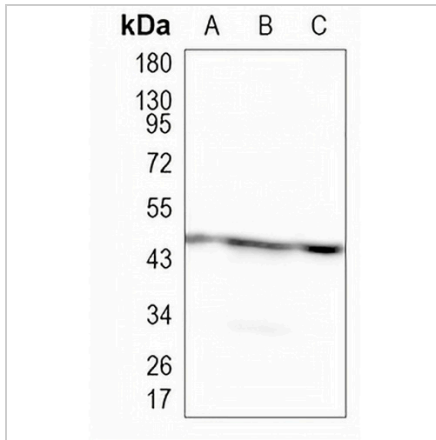
Description	Recombinant rabbit monoclonal antibody to ELP4
Specificity	Recognizes endogenous levels of ELP4 protein
Antibody Type	Primary antibody, Recombinant
Immunogen	KLH-conjugated synthetic peptide encompassing a sequence within human ELP4. The exact sequence is proprietary.
Purification	The antibody was purified by immunogen affinity chromatography.
Molecular Weight	Predicted: 46 kD; Observed: 46 kD
Form/Buffer	Liquid in PBS, pH 7.4, containing 50% glycerol, 0.2% BSA and 0.01% sodium azide.
Alternative Names	C11orf19; PAXNEB; Elongator complex protein 4; hELP4; PAX6 neighbor gene protein
Gene Symbol	ELP4
Entrez Gene	26610(Human)
SwissProt	Q96EB1(Human)

*AREX continuously optimizes our products. Webpage content may not reflect the latest updates. For inquiries, please contact info@arexbio.com or your local distributor.

*Clone Number, Reactivity, Source/Host and Clonality can be found in the product name and Key Features section above.

DATASHEET**ELP4 Rabbit Monoclonal Antibody(C1050)**

CAT. NO. AMA00662

DATA

Western blot analysis of ELP4 expression in HEK293T (A), K562 (B), Jurkat (C) whole cell lysates. (Predicted band size: 46 kD; Observed band size: 46 kD)

STORAGE

Store at 4°C short term. For long term storage, store at -20°C, avoiding freeze/thaw cycles.

NOTE

For Research Use Only. Not for diagnostic, therapeutics, prophylactic or in vivo use.