

## DATASHEET

# ENPP5 Rabbit Monoclonal Antibody(C1066)

CAT. NO. AMA00678

### KEY FEATURES

Target	ENPP5	Source / Host	Rabbit
Reactivity	Human	Clonality	Monoclonal
Applications	WB, IF/ICC	Conjugation	Unconjugated
Form / Buffer	Liquid in PBS, pH 7.4, containing 50% glycerol, 0.2% BSA and 0.01% sodium azide.	Storage	at-20°C

### BACKGROUND

Can hydrolyze NAD but cannot hydrolyze nucleotide di- and triphosphates. Lacks lysopholipase D activity. May play a role in neuronal cell communication.

### APPLICATION

To ensure optimal assay performance, AREX recommends conducting reagent titration tailored to each testing system for optimal detection results.

WB	1:500 - 1:1000
IF/ICC	1:50 - 1:200

\*Results are sample-specific. Please refer to your local assay conditions and test parameters for reference.

### PRODUCT OVERVIEW

Description	Recombinant rabbit monoclonal antibody to ENPP5
Specificity	Recognizes endogenous levels of ENPP5 protein
Antibody Type	Primary antibody, Recombinant
Immunogen	KLH-conjugated synthetic peptide encompassing a sequence within human ENPP5. The exact sequence is proprietary.
Purification	The antibody was purified by immunogen affinity chromatography.
Molecular Weight	Predicted: 54 kD; Observed: 55 kD
Form/Buffer	Liquid in PBS, pH 7.4, containing 50% glycerol, 0.2% BSA and 0.01% sodium azide.
Alternative Names	Ectonucleotide pyrophosphatase/phosphodiesterase family member 5; E-NPP 5; NPP-5
Gene Symbol	ENPP5
Entrez Gene	59084(Human)
SwissProt	Q9UJA9(Human)

\*AREX continuously optimizes our products. Webpage content may not reflect the latest updates. For inquiries, please contact [info@arexbio.com](mailto:info@arexbio.com) or your local distributor.

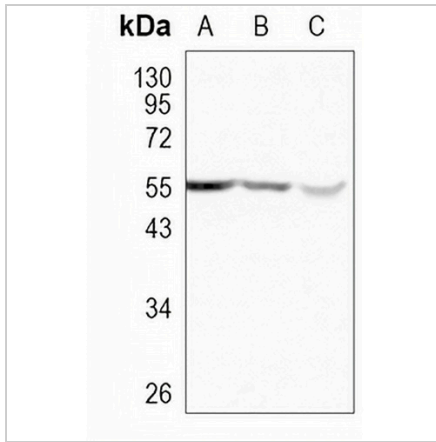
\*Clone Number, Reactivity, Source/Host and Clonality can be found in the product name and Key Features section above.

**DATASHEET**

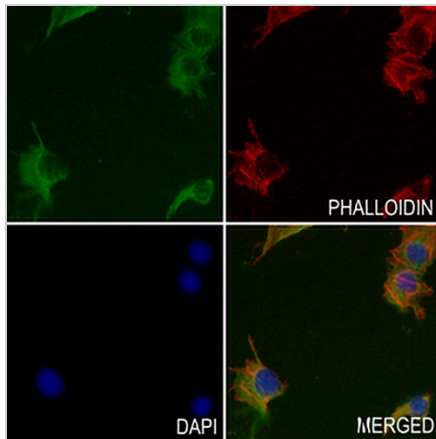
**ENPP5 Rabbit Monoclonal Antibody(C1066)**

CAT. NO. AMA00678

**DATA**



Western blot analysis of ENPP5 expression in HEK293T (A), MCF7 (B), HCT116 (C) whole cell lysates. (Predicted band size: 54 kD; Observed band size: 55 kD)



Immunofluorescent analysis of ENPP5 staining in COS7 cells. Formalin-fixed cells were permeabilized with 0.1% Triton X-100 in TBS for 5-10 minutes and blocked with 3% BSA-PBS for 30 minutes at room temperature. Cells were probed with the primary antibody in 3% BSA-PBS and incubated overnight at 4 °C in a humidified chamber. Cells were washed with PBST and incubated with an AREX® Fluor 488 -conjugated secondary antibody (green) in PBS at room temperature in the dark. Phalloidin - AREX® Fluor 594 was used to stain Actin filaments (red). DAPI was used to stain the cell nuclei (blue).

**STORAGE**

Store at 4°C short term. For long term storage, store at -20°C, avoiding freeze/thaw cycles.

**NOTE**

For Research Use Only. Not for diagnostic, therapeutics, prophylactic or in vivo use.