

**DATASHEET**

**RhoA/B/C Rabbit Monoclonal Antibody(C1068)**

CAT. NO. AMA00680

**KEY FEATURES**

Target	RhoA/B/C	Source / Host	Rabbit
Reactivity	Human, Mouse, Rat	Clonality	Monoclonal
Applications	WB, IHC	Conjugation	Unconjugated
Form / Buffer	Liquid in PBS, pH 7.4, containing 50% glycerol, 0.2% BSA and 0.01% sodium azide.	Storage	at-20°C

**BACKGROUND**

Small GTPase which cycles between an active GTP-bound and an inactive GDP-bound state. Mainly associated with cytoskeleton organization, in active state binds to a variety of effector proteins to regulate cellular responses such as cytoskeletal dynamics, cell migration and cell cycle . Regulates a signal transduction pathway linking plasma membrane receptors to the assembly of focal adhesions and actin stress fibers . Involved in a microtubule-dependent signal that is required for the myosin contractile ring formation during cell cycle cytokinesis . Plays an essential role in cleavage furrow formation. Required for the apical junction formation of keratinocyte cell-cell adhesion . Essential for the SPATA13-mediated regulation of cell migration and adhesion assembly and disassembly .

**APPLICATION**

To ensure optimal assay performance, AREX recommends conducting reagent titration tailored to each testing system for optimal detection results.

WB	1:500 - 1:1000
IHC	1:50 - 1:200

\*Results are sample-specific. Please refer to your local assay conditions and test parameters for reference.

**PRODUCT OVERVIEW**

Description	Recombinant rabbit monoclonal antibody to RhoA/B/C
Specificity	Recognizes endogenous levels of RhoA/B/C protein
Antibody Type	Primary antibody, Recombinant
Immunogen	KLH-conjugated synthetic peptide encompassing a sequence within human RhoA/B/C. The exact sequence is proprietary.
Purification	The antibody was purified by immunogen affinity chromatography.
Molecular Weight	Predicted: 21 kD; Observed: 22 kD
Form/Buffer	Liquid in PBS, pH 7.4, containing 50% glycerol, 0.2% BSA and 0.01% sodium azide.
Alternative Names	ARH12; ARHA; RHO12; Transforming protein RhoA; Rho cDNA clone 12; h12; ARH6; ARHB; Rho-related GTP-binding protein RhoB; Rho cDNA clone 6; h6; ARH9; ARHC; Rho-related GTP-binding protein RhoC; Rho cDNA clone 9; h9
Gene Symbol	RHOA; RHOB; RHOC
Entrez Gene	387; 388; 389(Human); 11848; 11852; 11853(Mouse); 117273(Rat)
SwissProt	P61586; P62745; P08134(Human); Q9QUI0; P62746; Q62159(Mouse); P61589(Rat)

\*AREX continuously optimizes our products. Webpage content may not reflect the latest updates. For inquiries, please contact [info@arexbio.com](mailto:info@arexbio.com) or your local distributor.

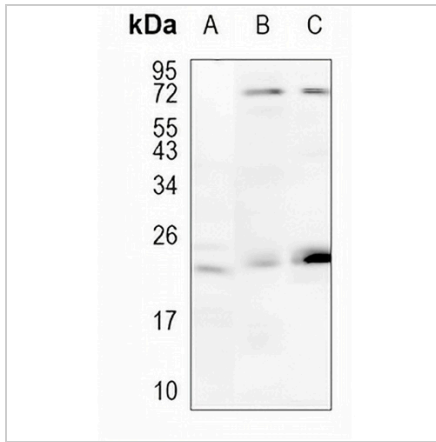
\*Clone Number, Reactivity, Source/Host and Clonality can be found in the product name and Key Features section above.

**DATASHEET**

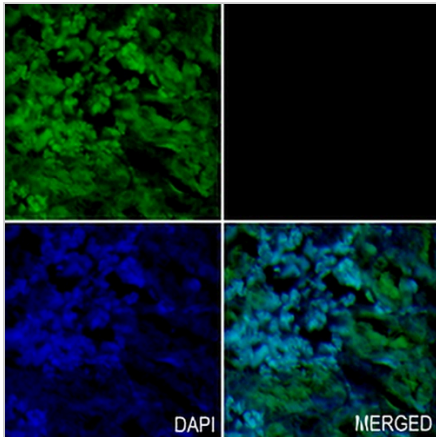
**RhoA/B/C Rabbit Monoclonal Antibody(C1068)**

CAT. NO. AMA00680

**DATA**



Western blot analysis of RhoA/B/C expression in HEK293T (A), mouse kidney (B), rat kidney (C) whole cell lysates. (Predicted band size: 21 kD; Observed band size: 22 kD)



Immunohistochemical analysis of RhoA/B/C staining in rat kidney formalin fixed paraffin embedded tissue section. The section was pre-treated using heat mediated antigen retrieval with sodium citrate buffer (pH 6.0). The section was then incubated with the antibody at room temperature and detected using an HRP conjugated compact polymer system. Tyramide-AREX® Fluor 488 (green) was used as the chromogen. The section was then counterstained with DAPI (blue).

**STORAGE**

Store at 4°C short term. For long term storage, store at -20°C, avoiding freeze/thaw cycles.

**NOTE**

For Research Use Only. Not for diagnostic, therapeutics, prophylactic or in vivo use.