

DATASHEET

EGR2 Rabbit Monoclonal Antibody(C1073)

CAT. NO. AMA00685

KEY FEATURES

Target	EGR2	Source / Host	Rabbit
Reactivity	Human, Mouse, Rat	Clonality	Monoclonal
Applications	WB	Conjugation	Unconjugated
Form / Buffer	Liquid in PBS, pH 7.4, containing 50% glycerol, 0.2% BSA and 0.01% sodium azide.	Storage	at-20°C

BACKGROUND

Sequence-specific DNA-binding transcription factor . Plays a role in hindbrain segmentation by regulating the expression of a subset of homeobox containing genes and in Schwann cell myelination by regulating the expression of genes involved in the formation and maintenance of myelin . Binds to two EGR2-consensus sites EGR2A (5'-CTGTAGGAG-3') and EGR2B (5'-ATGTAGGTG-3') in the HOXB3 enhancer and promotes HOXB3 transcriptional activation . Binds to specific DNA sites located in the promoter region of HOXA4, HOXB2 and ERBB2 . Regulates hindbrain segmentation by controlling the expression of Hox genes, such as HOXA4, HOXB3 and HOXB2, and thereby specifying odd and even rhombomeres . Promotes the expression of HOXB3 in the rhombomere r5 in the hindbrain .

APPLICATION

To ensure optimal assay performance, AREX recommends conducting reagent titration tailored to each testing system for optimal detection results.

WB	1:500 - 1:1000
----	----------------

*Results are sample-specific. Please refer to your local assay conditions and test parameters for reference.

PRODUCT OVERVIEW

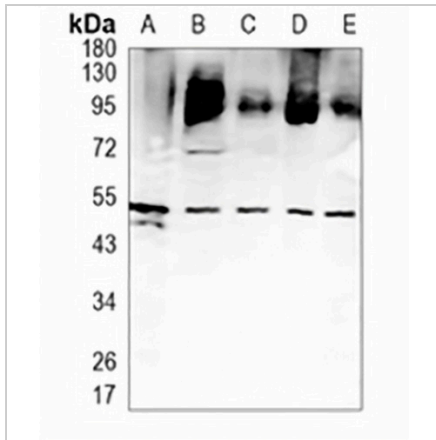
Description	Recombinant rabbit monoclonal antibody to EGR2
Specificity	Recognizes endogenous levels of EGR2 protein
Antibody Type	Primary antibody, Recombinant
Immunogen	KLH-conjugated synthetic peptide encompassing a sequence within human EGR2. The exact sequence is proprietary.
Purification	The antibody was purified by immunogen affinity chromatography.
Molecular Weight	Predicted: 50 kD; Observed: 53 kD
Form/Buffer	Liquid in PBS, pH 7.4, containing 50% glycerol, 0.2% BSA and 0.01% sodium azide.
Alternative Names	KROX20; E3 SUMO-protein ligase EGR2; AT591; Early growth response protein 2; EGR-2; Zinc finger protein Krox-20
Gene Symbol	EGR2
Entrez Gene	1959(Human); 13654(Mouse); 114090(Rat)
SwissProt	P11161(Human); P08152(Mouse); P51774(Rat)

*AREX continuously optimizes our products. Webpage content may not reflect the latest updates. For inquiries, please contact info@arexbio.com or your local distributor.

*Clone Number, Reactivity, Source/Host and Clonality can be found in the product name and Key Features section above.

DATASHEET**EGR2 Rabbit Monoclonal Antibody(C1073)**

CAT. NO. AMA00685

DATA

Western blot analysis of EGR2 expression in HEK293T (A), PC3 (B), mouse liver (C), mouse kidney (D), rat liver (E) whole cell lysates. (Predicted band size: 50 kD; Observed band size: 53 kD)

STORAGE

Store at 4°C short term. For long term storage, store at -20°C, avoiding freeze/thaw cycles.

NOTE

For Research Use Only. Not for diagnostic, therapeutics, prophylactic or in vivo use.