

DATASHEET

WAPAL Rabbit Monoclonal Antibody(C1085)

CAT. NO. AMA00697

KEY FEATURES

Target	WAPAL	Source / Host	Rabbit
Reactivity	Human	Clonality	Monoclonal
Applications	WB	Conjugation	Unconjugated
Form / Buffer	Liquid in PBS, pH 7.4, containing 50% glycerol, 0.2% BSA and 0.01% sodium azide.	Storage	at-20°C

BACKGROUND

Regulator of sister chromatid cohesion in mitosis which negatively regulates cohesin association with chromatin . Involved in both sister chromatid cohesion during interphase and sister-chromatid resolution during early stages of mitosis. Couples DNA replication to sister chromatid cohesion. Cohesion ensures that chromosome partitioning is accurate in both meiotic and mitotic cells and plays an important role in DNA repair.

APPLICATION

To ensure optimal assay performance, AREX recommends conducting reagent titration tailored to each testing system for optimal detection results.

WB	1:500 - 1:1000
----	----------------

*Results are sample-specific. Please refer to your local assay conditions and test parameters for reference.

PRODUCT OVERVIEW

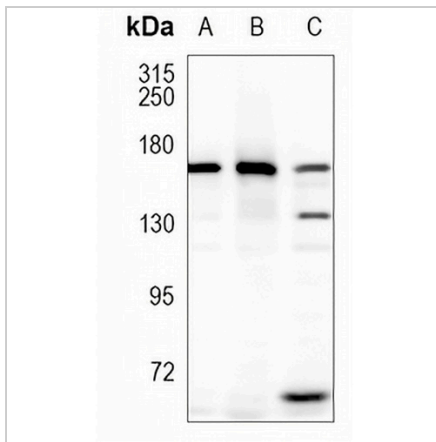
Description	Recombinant rabbit monoclonal antibody to WAPAL
Specificity	Recognizes endogenous levels of WAPAL protein
Antibody Type	Primary antibody, Recombinant
Immunogen	KLH-conjugated synthetic peptide encompassing a sequence within human WAPAL. The exact sequence is proprietary.
Purification	The antibody was purified by immunogen affinity chromatography.
Molecular Weight	Predicted: 132; Observed: 160; 132 kD
Form/Buffer	Liquid in PBS, pH 7.4, containing 50% glycerol, 0.2% BSA and 0.01% sodium azide.
Alternative Names	FOE; KIAA0261; WAPL; Wings apart-like protein homolog; Friend of EBNA2 protein
Gene Symbol	WAPAL
Entrez Gene	23063(Human)
SwissProt	Q7Z5K2(Human)

*AREX continuously optimizes our products. Webpage content may not reflect the latest updates. For inquiries, please contact info@arexbio.com or your local distributor.

*Clone Number, Reactivity, Source/Host and Clonality can be found in the product name and Key Features section above.

DATASHEET**WAPAL Rabbit Monoclonal Antibody(C1085)**

CAT. NO. AMA00697

DATA

Western blot analysis of WAPAL expression in HEK293T (A), Jurkat (B), K562 (C) whole cell lysates. (Predicted band size: 132; 137; 142 kD; Observed band size: 160; 132 kD)

STORAGE

Store at 4°C short term. For long term storage, store at -20°C, avoiding freeze/thaw cycles.

NOTE

For Research Use Only. Not for diagnostic, therapeutics, prophylactic or in vivo use.